

# CORNER RECORD

Agency Index

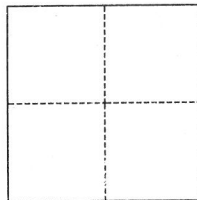
Document Number

BK 148 PG 86

City of OAKLAND County of ALAMEDA, CaliforniaBrief Legal Description LOT 1005 FORESTLAND EXTENSION (4 MAPS 90)

## CORNER TYPE

## COORDINATES (Optional)



- ☐ Government Corner ☐ Control  
☐ Meander ☒ Property  
☐ Rancho ☐ Other

Date of Survey March 22, 2022

N. \_\_\_\_\_ E. \_\_\_\_\_

Elevation \_\_\_\_\_

Units ☐ Metric ☒ U.S. Survey Foot

Horizontal Datum \_\_\_\_\_

Zone \_\_\_\_\_ Epoch Date \_\_\_\_\_

Vertical Datum \_\_\_\_\_

☐ Complies with Public Resources Code §§8801-8819☐ Complies with Public Resources Code §§8890-8902

PLS Act Ref.:

☒ 8765(d)☐ 8771☐ 8773☐ Other:Corner/  
Monument:☒ Left as found☒ Established☐ Rebuilt☐ Pre-Construction☐ Found and tagged☐ Reestablished☐ Referenced☐ Post-Construction

Narrative of corner identified and monument as found, set, reset, replaced, or removed:

☒ See sheet #2 for description(s):

HELD RECORD BEARINGS AND DISTANCES PER THE MAP OF FORESTLAND EXTENSION (4 MAPS 90) AND HELD FOUND MONUMENTS PER CORNER RECORD 4419, FILED MARCH 30, 2011 IN BOOK 40 OF CORNER RECORDS PAGE 26.

## SURVEYOR'S STATEMENT

This Corner Record was prepared by me or under my direction in conformance with

the Professional Land Surveyors' Act on March 23, 2022

Signed

P.L.S. or R.C.E. No.

4961



## COUNTY SURVEYOR'S STATEMENT

This Corner Record was received

and examined and filed

AUGUST 22, 2022

Signed

P.L.S. or R.C.E. No.

7010

Title ALAMEDA COUNTY SURVEYOR

County Surveyor's Comment





- ☒ FOUND PIN MONUMENT IN CONCRETE PER (4 M 90)
- ☒ FOUND 5/8" REBAR WITH PLASTIC CAP, LS 4961 PER (CR 4419)
- ☒ 5/8" REBAR WITH CAP, PER (CR 4419) SEARCHED FOR NOT FOUND
- ☒ 2" HUB WITH TAG, PER (CR 4419) SEARCHED FOR NOT FOUND
- ☒ P.K. NAIL WITH TAG, PER (CR 4419) SEARCHED FOR NOT FOUND
- ☐ SET 5/8" REBAR WITH PLASTIC CAP, LS 4961

**LEGEND**

1006

10' PATH PLOT 'Y'

NOTE:  
THE BOUNDARY LINES FOR THIS LOT WERE ESTABLISHED USING THE RECORD BEARINGS AND DISTANCES AS SHOWN ON THE MAP OF FORESTLAND EXTENSION (4 M 90). THE FOUND CONCRETE MONUMENTS IN SKYLINE BOULEVARD ARE AS SHOWN ON (4 M 90). THE PREVIOUSLY FILED CORNER RECORD 4419 ALSO UTILIZED THESE SAME BEARINGS AND DISTANCES.

SKYLINE BOULEVARD (60°)

BASIS OF BEARINGS

382.12' MON. TO MON.

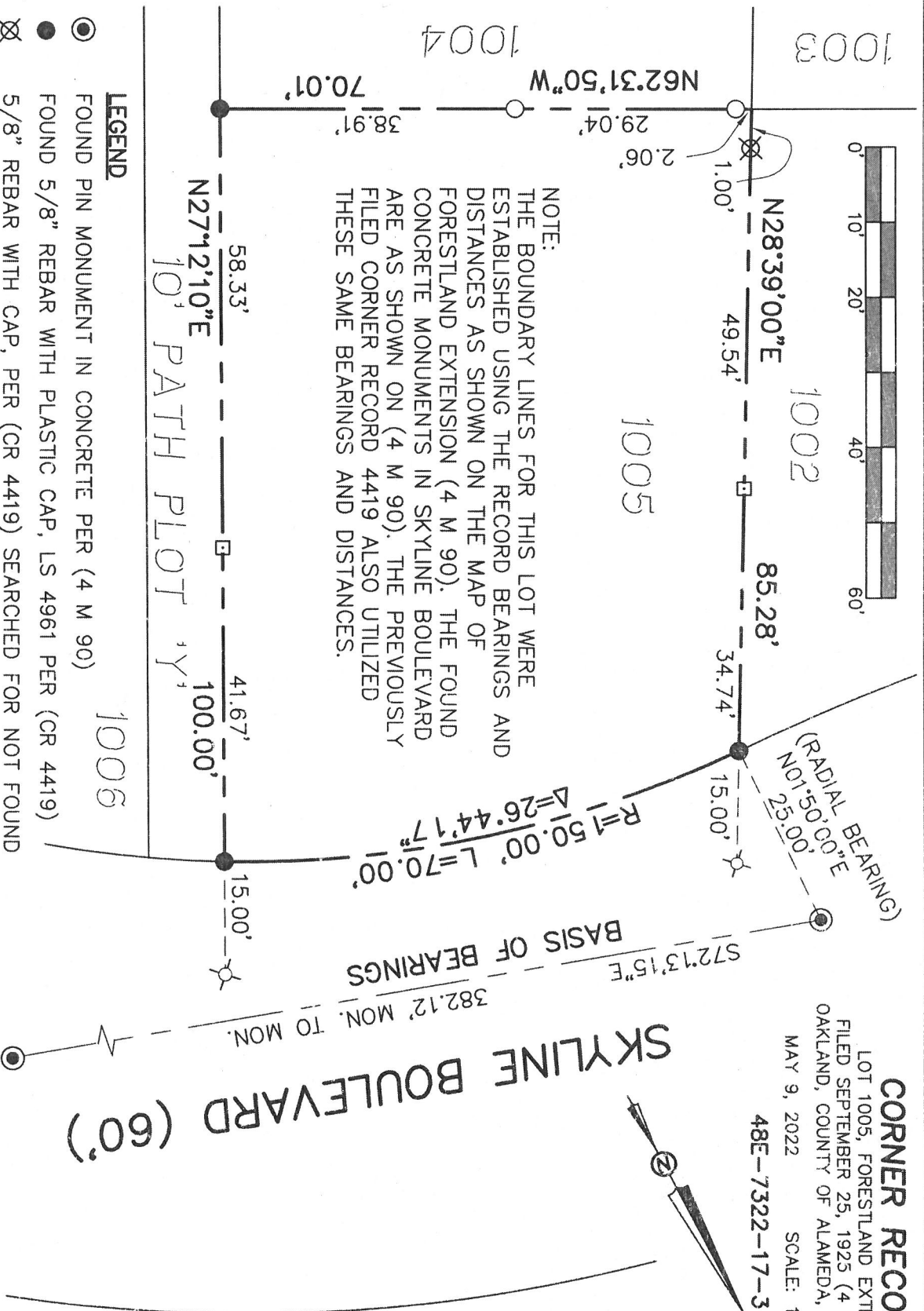
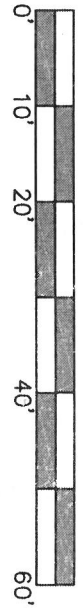
48E-7322-17-3

SCALE: 1" = 20'

**CORNER RECORD**

LOT 1005, FORESTLAND EXTENSION  
FILED SEPTEMBER 25, 1925 (4 MAPS 90)  
OAKLAND, COUNTY OF ALAMEDA, CALIFORNIA

MAY 9, 2022



F.B. RR-94

ARROWHEAD-CR.DWG JOB NO. 22-10915

**MORAN ENGINEERING, INC.**  
BERKELEY, CALIFORNIA 94704  
(510) 848-1930