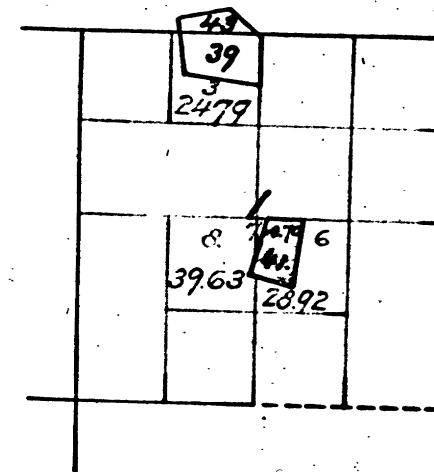


Township N°4 North, Range N°11 East,

Mount Diablo Meridian.

T.4N, R.11E. M.D.M.



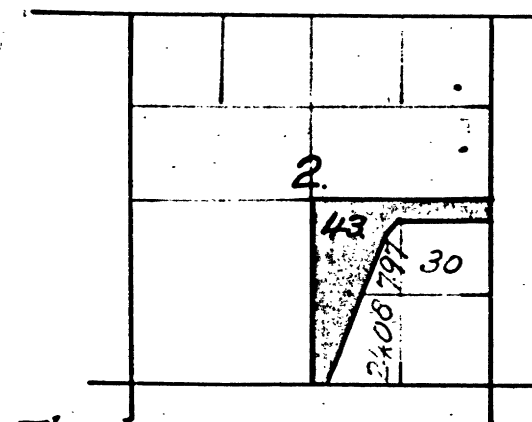
1035-41. Golden Hill Quartz Mine.

The above diagram of Section 1, Township 4 North, Range 11 East, Mount Diablo Meridian, is correctly copied from the original map as amended and on file in this office.

U.S. Surveyor General's Office,
San Francisco, California.
September 21, 1894.

W.S. Green
U.S. Surv. Genl. Cal.

T.4N, R.11E. M.D.M.



The Register of the Local Land Office at Sacramento certified under date of Jan. 24, 1889, that no application for patent for Lot N°40 in Section 2 had ever been filed in that Office.

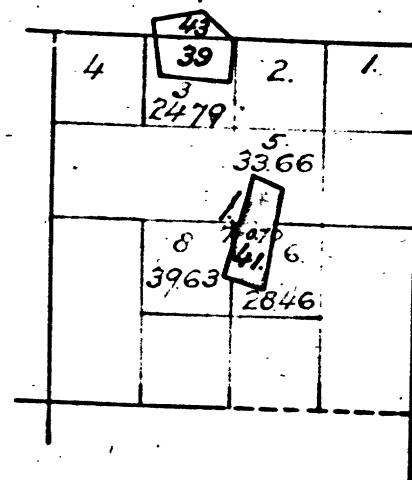
43. Rising Star Placer Mine.

The above diagram of Section N°2, Township N°4 North, Range N°11 East, Mount Diablo Meridian is correctly copied from the original map as amended and on file in this office.

U.S. Surveyor General's Office,
San Francisco, California.
April 1st 1889.

W.D. Hammond, Jr.
U.S. Surv. Genl. Cal.

T.4N, R.11E. M.D.M.



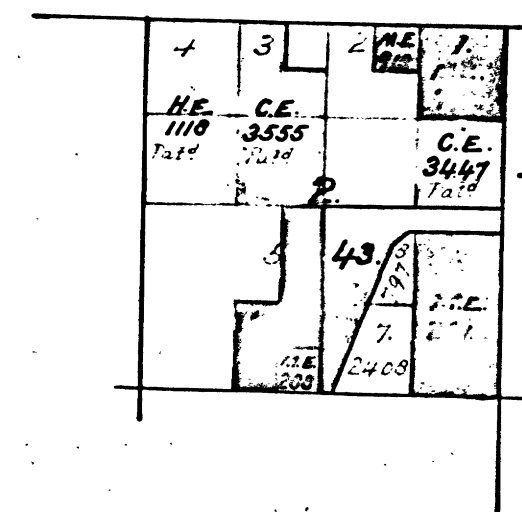
311-39. Williams & Hewes Placer Mine. V62-20
1035-41. Golden Hill Quartz Mine

The above diagram of Sec. 1, Township N°4 North, Range N°11 East, Mount Diablo Meridian, is correctly copied from the original map as amended and on file in this office.

U.S. Surveyor General's Office,
San Francisco, California.
August 29th 1889.

W.D. Hammond, Jr.
U.S. Surv. Genl. Cal.

T.4N, R.11E. M.D.M.



2813-
43 Rising Star Placer. V117-23

43- Rising Star Placer Mine. M. A. N°1748
M. E. N°79 - Patd July 16th 1872.
M. E. N°261 - Patd April 22nd 1875.
M. E. N°288 - Patd May 4th 1875.
M. E. N°709 - made Feb'y 27th 1880
M. E. N°918 - Patd May 7th 1886.

From list of
Sacramento. L.O.
dated May 2nd 1890.

The above diagram of Section 2 Township N°4 North, Range N°11 East, Mount Diablo Meridian, is correctly copied from the original map as amended and on file in this office.

U.S. Surveyor General's Office,
San Francisco, California.
May. 8th 1890.

W.D. Hammond, Jr.
U.S. Surv. Genl. Cal.

DEPARTMENT OF THE INTERIOR,
GENERAL LAND OFFICE,
Washington, D. C. *Jan 4 1890*
I hereby certify that this is a true copy
of the plats of official survey of the lands
to which it relates, on file in this office.

H. H. Smith
Recorder, General Land Office.

41 320

BLM 158

T.4N, R.11E. M.D.

CHAINS

CHAINS
10 20 40 60 80 120