

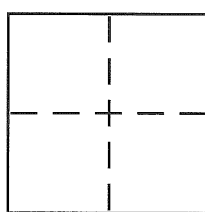
CORNER RECORD

Document Number CR 5749

City of FREMONT

County of ALAMEDA, California

Brief Legal Description LOT 1, TRACT 7632, "CANYON HEIGHTS ESTATES" (BOOK 297 MAPS, PAGE 72)



CORNER TYPE
Government Corner ☐ Control ☐
Meander ☐ Property ☒
Rancho ☐ Other ☐
Date of Survey JUNE 22, 2013

COORDINATES (Optional)
N. _____
E. _____
Zone _____ NAD27 ☐ NAD83 ☐
NAD83 Epoch _____
Elev. _____
Vert. Datum: NGVD29 ☐ NAVD88 ☐
Meas. Units: Metric ☐ Imperial ☐

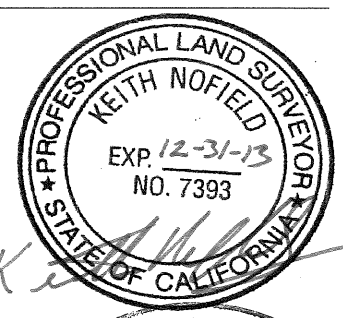
Corner - Left as found ☐ Found and tagged ☐ Established ☒ Reestablished ☐ Rebuilt ☐

Identification and type of corner found: Evidence used to identify or procedure used to establish or reestablish the corner:
FOUND: STANDARD STREET MONUMENTS WITH PUNCH IN MONUMENT WELLS, PER TRACT 7632
SEE SKETCH ON PAGE 2 OF 2.

A description of the physical condition of the monument as found and as set or reset:
SET: NAIL AND 3/4" DIAMETER BRASS TAG "PLS 7393" DRILLED AND EPOXIED IN CONCRETE SIDEWALK (2' OFFSET), AND 3/4" IRON (24" LENGTH) WITH PLASTIC CAP "PLS 7393".
SEE SKETCH ON PAGE 2 OF 2.

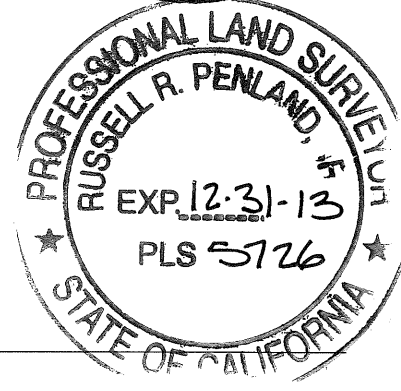
SURVEYOR'S STATEMENT

This Corner Record was prepared by me or under my direction in conformance with the Land Surveyor's Act on JULY 13, 2013
Signed Keith Nofield P.L.S or R.C.E. No. PLS 7393



COUNTY SURVEYOR'S STATEMENT

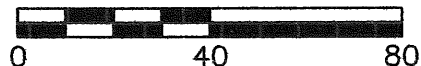
This Corner Record was received 7-15-13
and examined and filed 7-25-13
Signed Russell R. Penland P.L.S or R.C.E. No. 5726
Title COUNTY SURVEYOR
County Surveyor's Comment _____



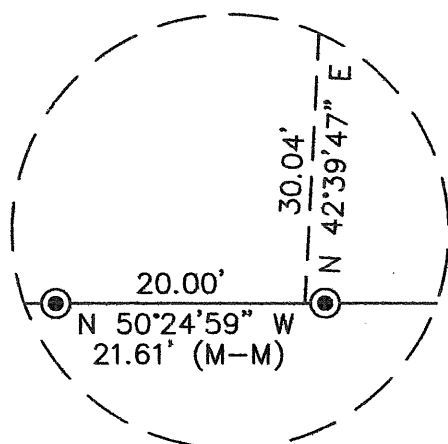
LEGEND

- ⊙ FOUND BRASS DISC & PUNCH IN STANDARD MONUMENT WELL (BK 297 MAPS, PG 72)
- SET NAIL & 3/4" BRASS TAG "PLS 7393" IN CONCRETE SIDEWALK (2' OFFSET)
- SET 3/4" IRON PIPE (24" LENGTH) AND PLASTIC CAP "PLS 7393"
- M-M MONUMENT TO MONUMENT
- () RECORD INFORMATION
- PSE PUBLIC SERVICE EASEMENT
- SE SLOPE EASEMENT
- WBE WETBAND EASEMENT

SCALE IN FEET



1 INCH = 40 FEET



DETAIL
NOT TO SCALE

