

1 SANITARY DETAIL

GREASE TRAP CALCULATIONS:

$D \times GL \times (HR/12) = \text{SIZE IN GALLONS}$

D = SEATS IN RESTAURANT (INDOOR AND OUTDOOR)
 GL = GALLONS OF WASTEWATER PER MEAL (PAPERWARE, 10 GAL)
 HR = HOURS OF OPERATION

D = 84
 GL = 10
 HR = 10

$84 \times 10 \times 10/12 = 700$

THEREFORE, THE 1,000 GAL. GREASE INTERCEPTOR SPECIFIED ON THE NEXT PAGE IS SUFFICIENT, BASED ON FLORIDA PLUMBING CODE 2020.

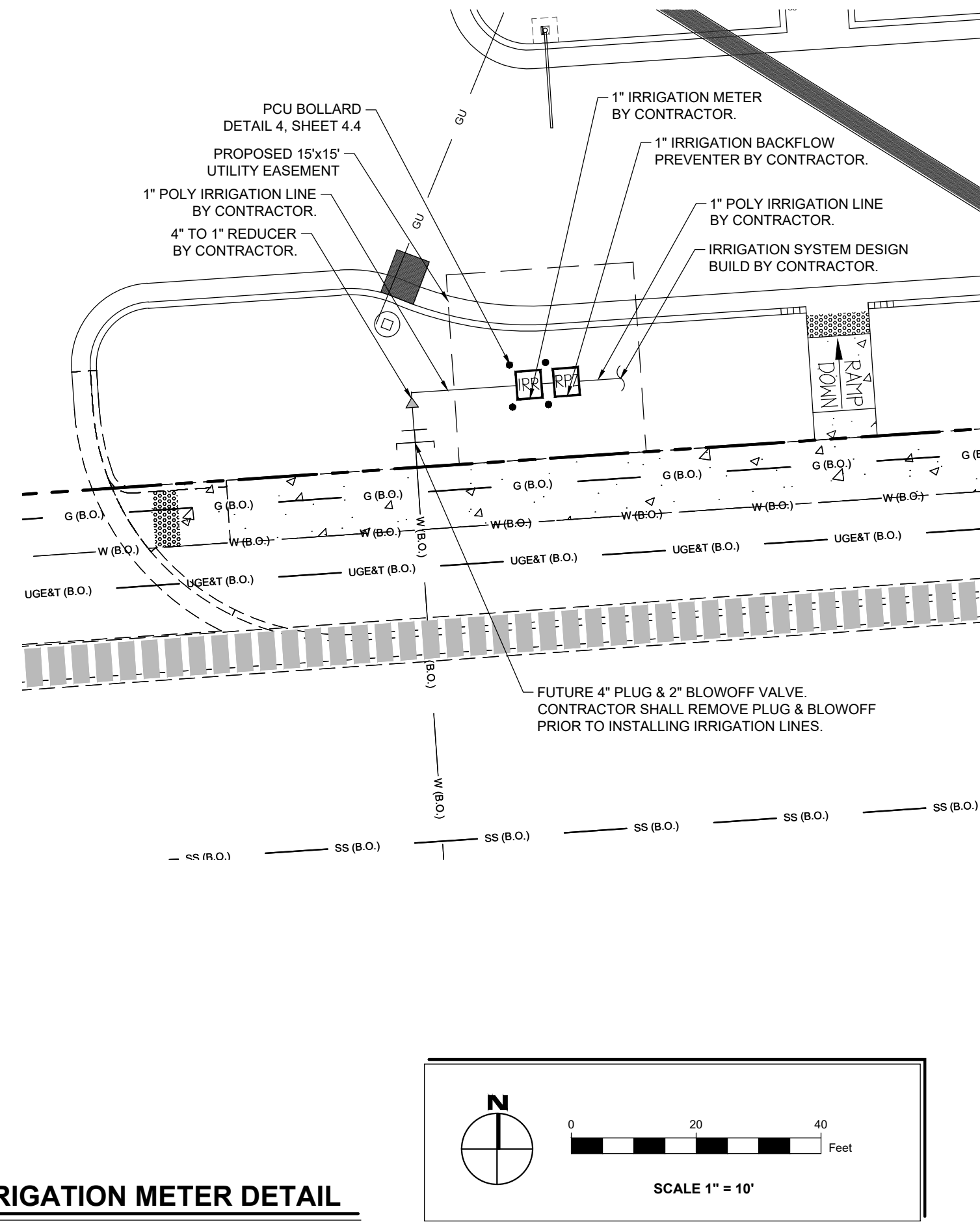
IRRIGATION FLOW DESIGN ANALYSIS:

MAXIMUM STATION FLOW = 26.53 GPM
 FLOW AVAILABLE AT POC = 37.50 GPM
 RESIDUAL FLOW AVAILABLE = 10.97 GPM

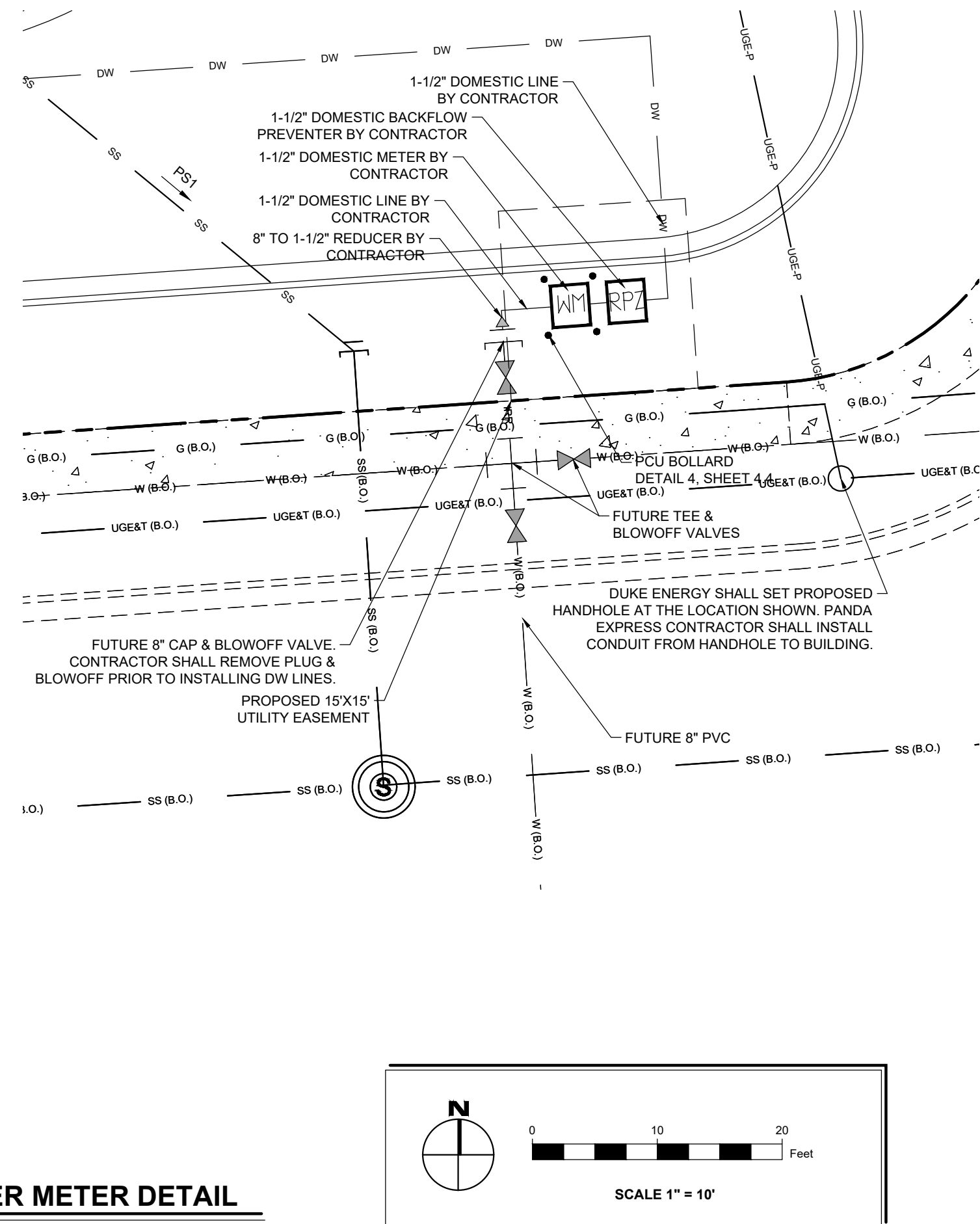
MAX. GAL/DAY = 2,132 GAL.
 MAX. GAL/WEEK = 7,556 GAL.

*FLOWS ARE BASED ON HYDRANT TEST COMPLETED BY MASTER DEVELOPER OF CYPRESS RANCH DEVELOPMENT. CONTRACTOR SHALL FIELD VERIFY INFORMATION ABOVE.

PLEASE REFER TO THE IRRIGATION PLAN (SHEET I01.0 FOR ADDITIONAL INFORMATION.



2 IRRIGATION METER DETAIL



3 WATER METER DETAIL



PANDA EXPRESS, INC.
 1683 WALNUT GROVE AVE.
 ROSEMEAD, CALIFORNIA 91770
 TELEPHONE: 626.799.9898
 FACSIMILE: 626.372.8268

All ideas, designs, arrangement and plans indicated or represented by this drawing are the property of Panda Express Inc. and were created for use on this specific project. None of these ideas, designs, arrangements or plans may be used by or disclosed to any person, firm, or corporation without the written permission of Panda Express Inc.

REVISIONS:

C1	1ST COUNTY COMMENTS	04/05/2021
C2	2ND COUNTY COMMENTS	06/04/2021

ISSUE DATE:

ALT. STANDARDS	12/17/2020
PRELIMINARY SITE PLAN	01/12/2021
COUNTY COMMENTS	04/05/2021
ISSUE FOR BID	06/04/2021

DRAWN BY: INGENIUM

PANDA PROJECT #: D8135
 PANDA STORE #:
 ARCH PROJECT #:



UTILITY DETAIL
 PLAN
 C04.1