

RECORD OF SURVEY NO. 36-36

SHEET 1 OF 1

BEING A SURVEY OF A PORTION OF MAMMOTH CAMP TRACT NO. 2, AS PER MAP  
RECORDED IN BOOK 1, PAGE 5 IN THE OFFICE OF THE COUNTY RECORDER, MONO  
COUNTY, CALIFORNIA. SECTION 3, T.4 S., R.27 E., M.D.B., & M.

THIS MAP CORRECTLY REPRESENTS A SURVEY  
MADE BY ME OR UNDER MY DIRECTION IN  
CONFORMANCE WITH THE REQUIREMENTS OF  
THE LAND SURVEYORS ACT AT THE REQUEST  
OF JAIME GESUNDEIT IN JULY, 1984

DAVID LAVERTY L.S. 4587

THIS MAP HAS BEEN EXAMINED FOR CONFORMANCE  
WITH THE REQUIREMENTS WITH THE LAND  
SURVEYORS ACT THIS 5TH DAY OF NOVEMBER,  
1984.

RICHARD J. MELIM BY: DEBRA BORDMAN  
COUNTY SURVEYOR DEPUTY COUNTY  
SURVEYOR

FILED THIS 17th DAY OF December, 1984,  
AT 1:20 a.m./p.m. IN BOOK 1 OF RECORD OF  
SURVEYS AT PAGE 106 AT THE REQUEST  
OF JAIME GESUNDEIT.  
INSTRUMENT NO. 4458  
FEE: \$ 5.00

RENN NOLAN BY: J. M. P. R. S.  
MONO COUNTY RECORDER DEPUTY COUNTY  
RECORDER

BASIS OF BEARINGS

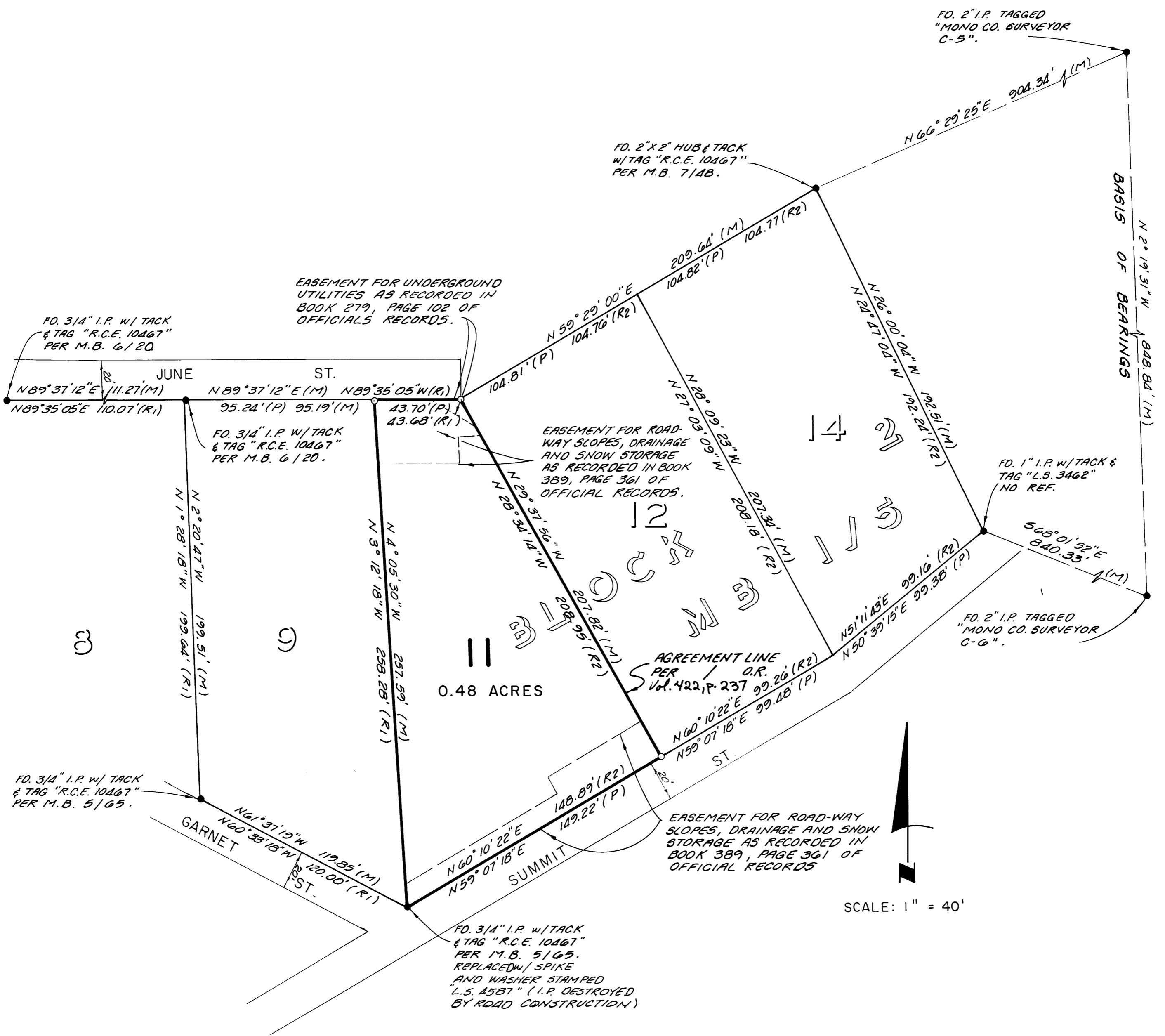
THE BASIS OF BEARINGS FOR THIS SURVEY IS  
N 2° 15' 31" W AS SHOWN BETWEEN POINTS  
C5 AND C6 ON R.S. M.B. 1/84

RECORD INFORMATION

R1 RECORD INFORMATION PER M.B. 6/21 & 6/20.  
R2 RECORD INFORMATION PER M.B. 7/48.  
P PROPORTIONED FROM MEASUREMENTS.

LEGEND

- FOUND MONUMENT AS NOTED.
- SET 2" IRON PIPE TAGGED "L.S. 4587"



R/S Vol. 1 Page 106