

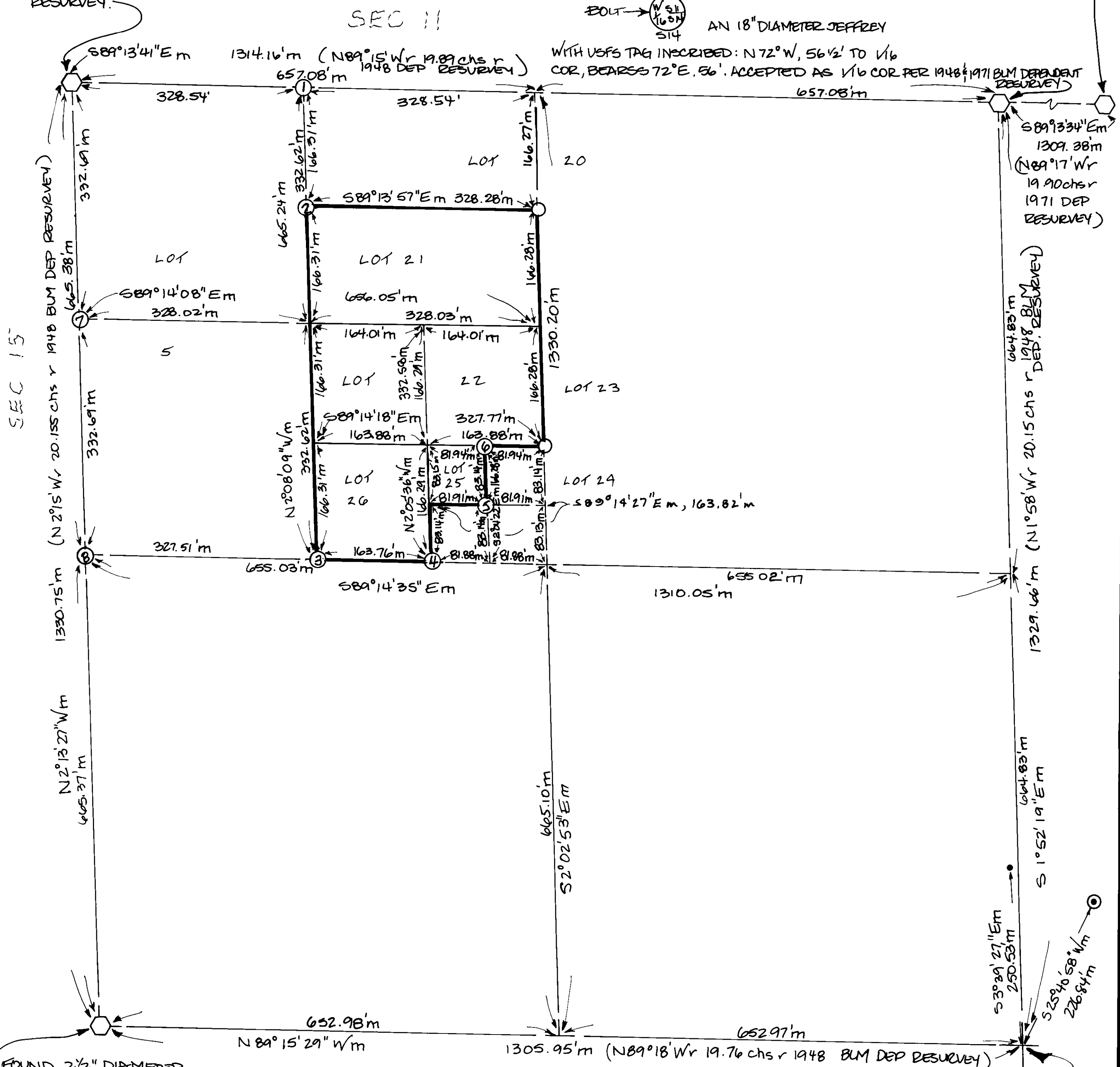
D K25 R26E
 S10 S11
 S15 S14
 1929

SCALE: 1"=100'

BORDER $\rightarrow \frac{115}{91 \sqrt{1M}}$

BOLT \rightarrow $\begin{pmatrix} W & S \\ 16 & 54 \end{pmatrix}$
514

WITH USFS TAG INSCRIBED: N 72° W, 56 1/2' TO 1/16
COR, BEARSS 72° E, 56'. ACCEPTED AS 1/16 COR PER 1948 & 1971 BLM DEPENDENT



NY 16
S15 | S14
1948

NW1/16
S14
1948

WAS FOUND ON MAY 8, 1992, 2' BELOW GRADE. SUBSEQUENT IMPROVEMENTS HAVE BEEN CONSTRUCTED OVER 1992 MONUMENT LOCATION. THE CORNER LOCATION WAS RE-ESTABLISHED FROM REF POINTS SHOWN HEREON THAT WERE ESTABLISHED IN 1992.

P. M. Vol 4 Pg 110 B