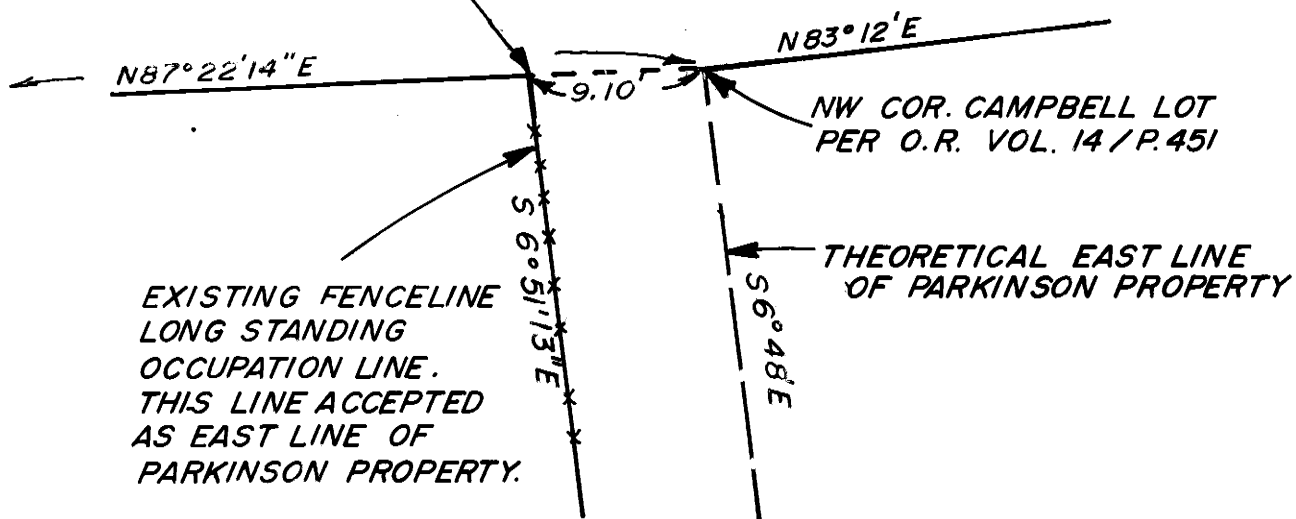


FOUND 2" I. P. & TAG
R.C.E. 10467 NW COR. PARCEL 2
P.M. VOL. 1 / P. 82

DETAIL "A"

THIS POINT LOCATED AT INTERSECTION
OF FENCE LINE AND LINE RUNNING FROM
NW COR. PARKINSON TO NW COR.
CAMPBELL LOT.



LEGEND:

- FOUND MONUMENT
AS DESCRIBED
- SET 5/8" REBAR & CAP
RCE 30029

SCALE: 1" = 60'

FOUND 1" I.P. & TAG RCE 10467-1/64 COR
SEC. 31/32 PER P.M. VOL. 1 / P. 82

THIS LINE ACCEPTED AS SECTION LINE

N87°22'14"E 402.19'

SEE DETAIL
"A"

PARCEL "3"
4.698 acres

PARCEL "1"
0.580 ac.

PARCEL "2"
0.794 ac.

FOUND SPIKE IN CENTERLINE BENTON ROAD
SET BY CALTRANS CREW JULY 9, 1980
NO RECORD MAP ON FILE.

FOUND U.S.G.L.C. BRASS CAP
SW COR. SEC. 32

FOUND 1/2" I.P. IN
CONCRETE R/S
BK. 1 / P. 14

P.M. Vol. 2
Page 101-4