

SCALE: 1" = 40'

TRACT N^o 36-49
LA VISTA BLANC
IN UNINCORPORATED TERRITORY OF MONO COUNTY, CALIFORNIA

SEPTEMBER, 1972

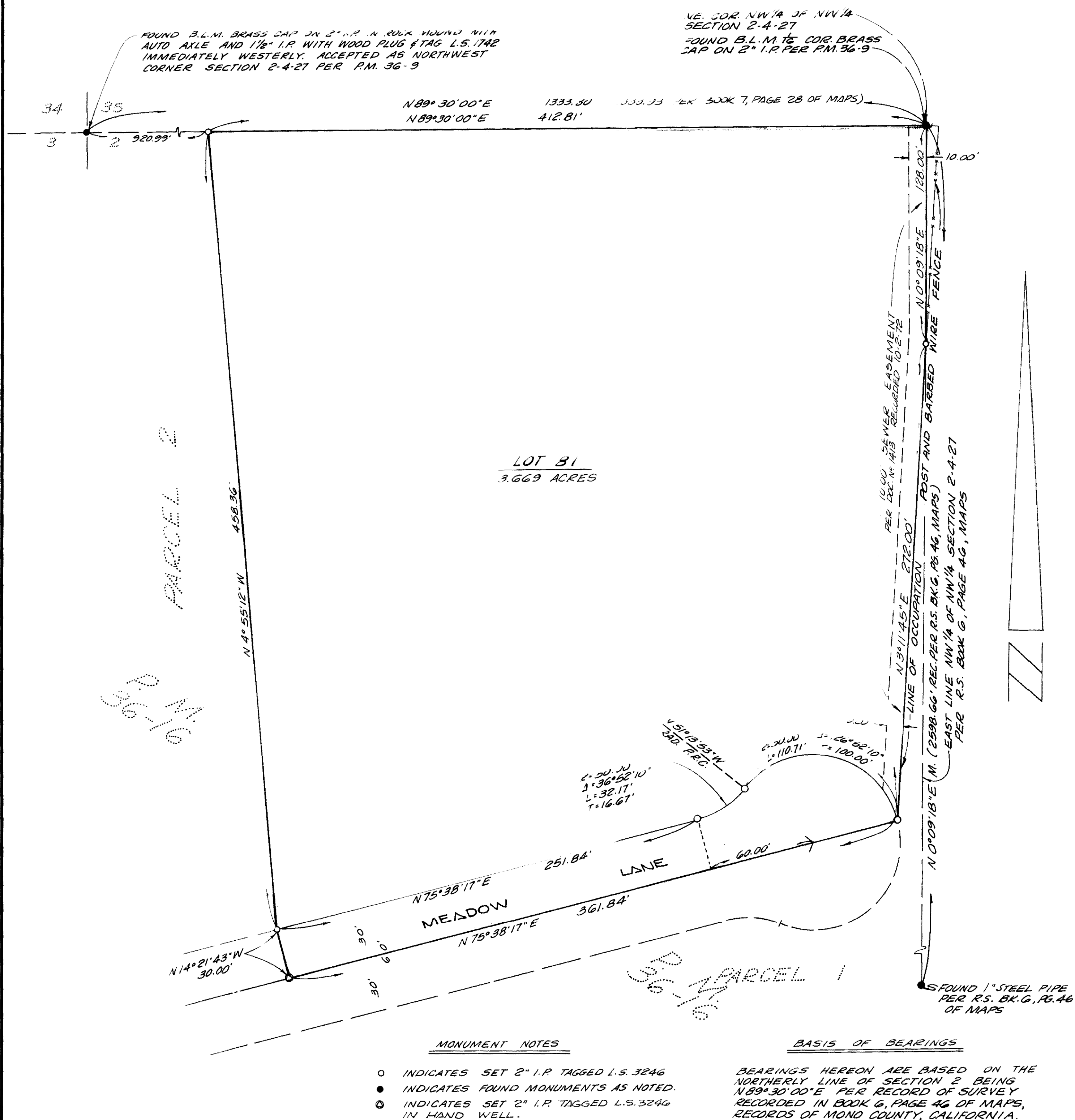
1 LOT AND 80 CONDOMINIUM UNITS

WILLIAMSON & SCHMID
CIVIL ENGINEERS

GERALD F. OLDENBURG. L.S. 3246

3.942 ACRES

FOR CONDOMINIUM PURPOSES



Vol. 8, Pg. 25-A