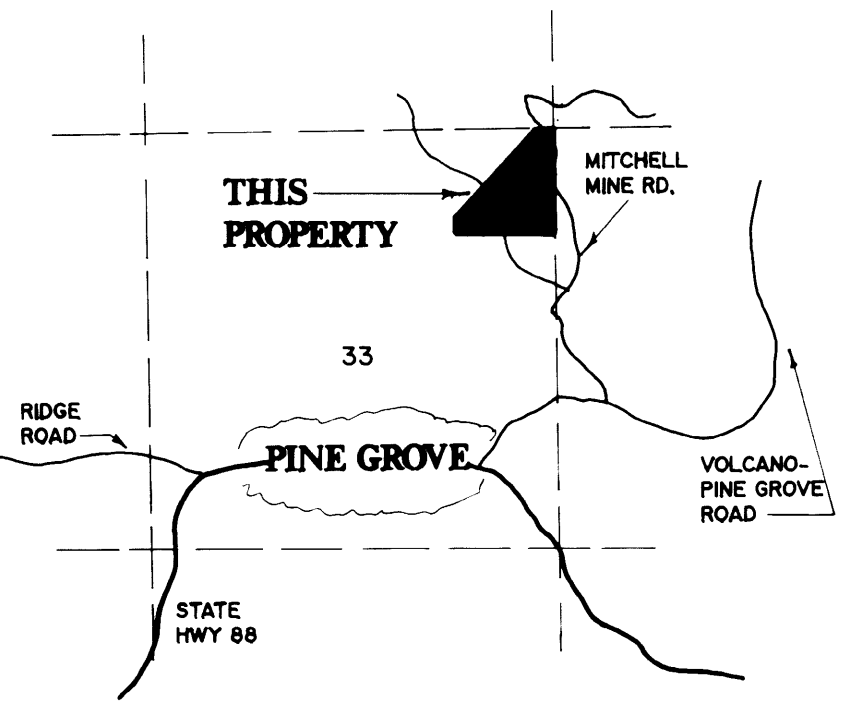
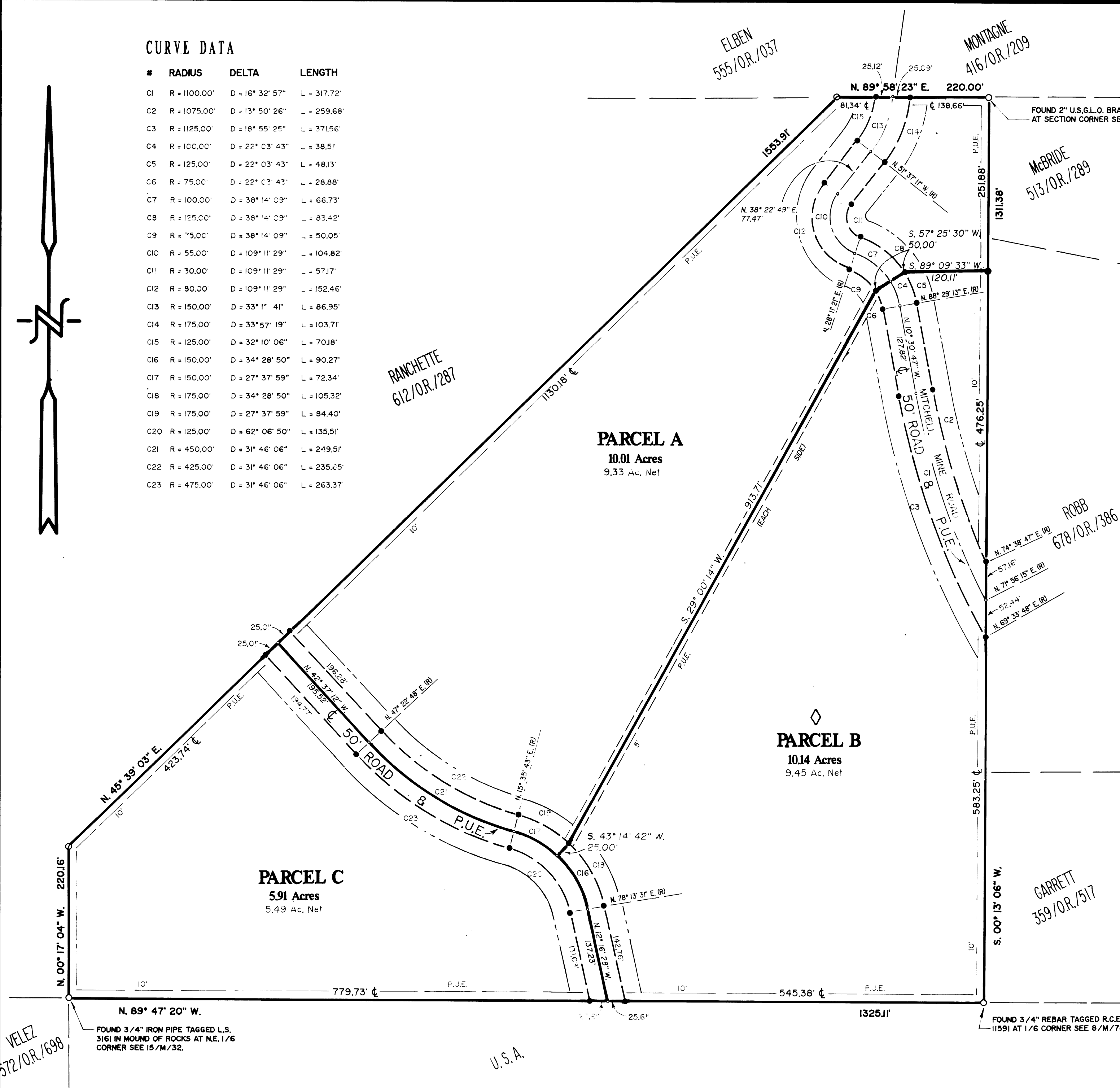
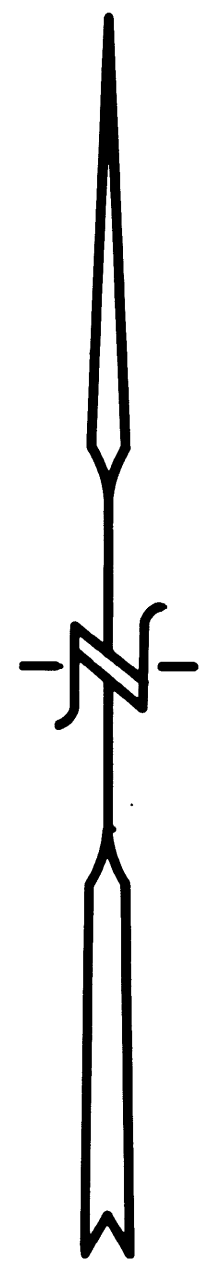


CURVE DATA

#	RADIUS	DELTA	LENGTH
C1	R = 1100.00'	D = 16° 32' 57"	L = 317.72'
C2	R = 1075.00'	D = 13° 50' 26"	L = 259.68'
C3	R = 1125.00'	D = 18° 55' 25"	L = 371.56'
C4	R = 100.00'	D = 22° 03' 43"	L = 38.51'
C5	R = 125.00'	D = 22° 03' 43"	L = 48.13'
C6	R = 75.00'	D = 22° 03' 43"	L = 28.88'
C7	R = 100.00'	D = 38° 14' 09"	L = 66.73'
C8	R = 125.00'	D = 38° 14' 09"	L = 83.42'
C9	R = 75.00'	D = 38° 14' 09"	L = 50.05'
C10	R = 55.00'	D = 109° 11' 29"	L = 104.82'
C11	R = 30.00'	D = 109° 11' 29"	L = 57.17'
C12	R = 90.00'	D = 109° 11' 29"	L = 152.46'
C13	R = 150.00'	D = 33° 1' 41"	L = 86.95'
C14	R = 175.00'	D = 33° 57' 19"	L = 103.71'
C15	R = 125.00'	D = 32° 10' 06"	L = 70.18'
C16	R = 150.00'	D = 34° 28' 50"	L = 90.27'
C17	R = 150.00'	D = 27° 37' 59"	L = 72.34'
C18	R = 175.00'	D = 34° 28' 50"	L = 105.32'
C19	R = 175.00'	D = 27° 37' 59"	L = 94.40'
C20	R = 125.00'	D = 62° 06' 50"	L = 135.51'
C21	R = 450.00'	D = 31° 46' 06"	L = 249.51'
C22	R = 425.00'	D = 31° 46' 06"	L = 235.25'
C23	R = 475.00'	D = 31° 46' 06"	L = 263.37'



NOTES and LEGEND

- DENOTES 3/4" REBAR TAGGED L.S. 3725 AND SET ON THIS SURVEY.
- DENOTES 3/4" REBAR TAGGED L.S. 3725 PER 43/M/18.
- DENOTES A FOUND MONUMENT, THE CHARACTER OF WHICH IS NOTED ON PLAT.
- DENOTES A MATHEMATICAL POINT ONLY, NOTHING FOUND OR SET.

NOTE:
AN ENGINEERED SEWAGE DISPOSAL DESIGN IS REQUIRED TO SERVE PARCEL B. CONTACT THE ENVIRONMENTAL HEALTH DEPARTMENT FOR DETAILS.

ALL ROADS & P.U.E.'s SHOWN ON THIS MAP ARE OFFERED FOR DEDICATION TO AMADOR COUNTY

PARCEL MAP No. 2291
EDWARD H. and PATRICIA A. COLLETT &
PAUL D. and SANDRA J. SCHAEFFER
BEING A PORTION OF SECTION 33, T.7N., R.12E., M.D.M.
COUNTY OF AMADOR, STATE OF CALIFORNIA

Scale: 1" = 100' April, 1993

Toma & Anderson
Licensed Land Surveyors
41 Summit Street
Jackson, California
(209) 223-0156