

CORNER RECORD

Agency Index

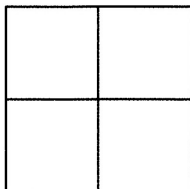
BK 113 PG 96

Document Number

CR 11707

City of EDEN TOWNSHIP

County of ALAMEDA, California

Brief Legal Description WELL MONUMENT LOCATED WITHIN WOODROE COURT
IN FRONT OF 3030 WOODROE COURT

CORNER TYPE

Government Corner ☐ Control ☒
Meander ☐ Property ☐
Rancho ☐ Other ☐

Date of Survey 6/25/18

COORDINATES (Optional)

N. 2076483 ± E. 6111595 ±

Elevation

Units Metric ☐ U.S. Survey Foot ☐

Horizontal Datum

Zone Epoch Date

Vertical Datum

☐ Complies with Public Resources Code §§8801-8819☐ Complies with Public Resources Code §§8890-8902PLS Act Ref: ☐ 8765(d)☒ 8771☐ 8773☐ Other:Corner/
Monument: ☒ Left as found☐ Established☐ Rebuilt☒ Pre-Construction☐ Found and tagged☐ Reestablished☒ Referenced☐ Post-Construction

Narrative of corner identified and monument as found, set, reset, replaced, or removed:

☐ See sheet #2 for description(s) :

FOUND ROD IN CONCRETE IN MONUMENT WELL

FOUND AND SET POINTS AS SHOWN ON PAGE 2.

THIS POINT WAS REFERENCED PRIOR TO A CONSTRUCTION PROJECT IN THE VICINITY.

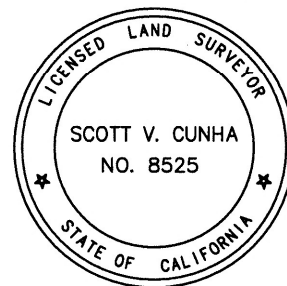
THE TIES SHOWN HEREON ARE FOR THE PURPOSE OF PERPETUATING FOUND MONUMENTATION.

NO CLAIM IS MADE AS TO THE RELATIONSHIP OF THE POINTS OR LINES SHOWN HEREON TO TRUE
BOUNDARY LOCATION.

SURVEYOR'S STATEMENT

This Corner Record was prepared by me or under my direction in conformance with

the Professional Land Surveyors' Act on JUNE 29, 2018.

Signed SCOTT V. CUNHA P.L.S. or R.C.E. No. LS 8525

COUNTY SURVEYOR'S STATEMENT

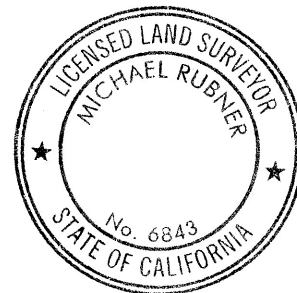
This Corner Record was received 3 JULY 2018

and examined and filed 13 SEPTEMBER 2018.

Signed MICHAEL RUBNER P.L.S. or R.C.E. No. 6843

Title COUNTY SURVEYOR

County Surveyor's Comment

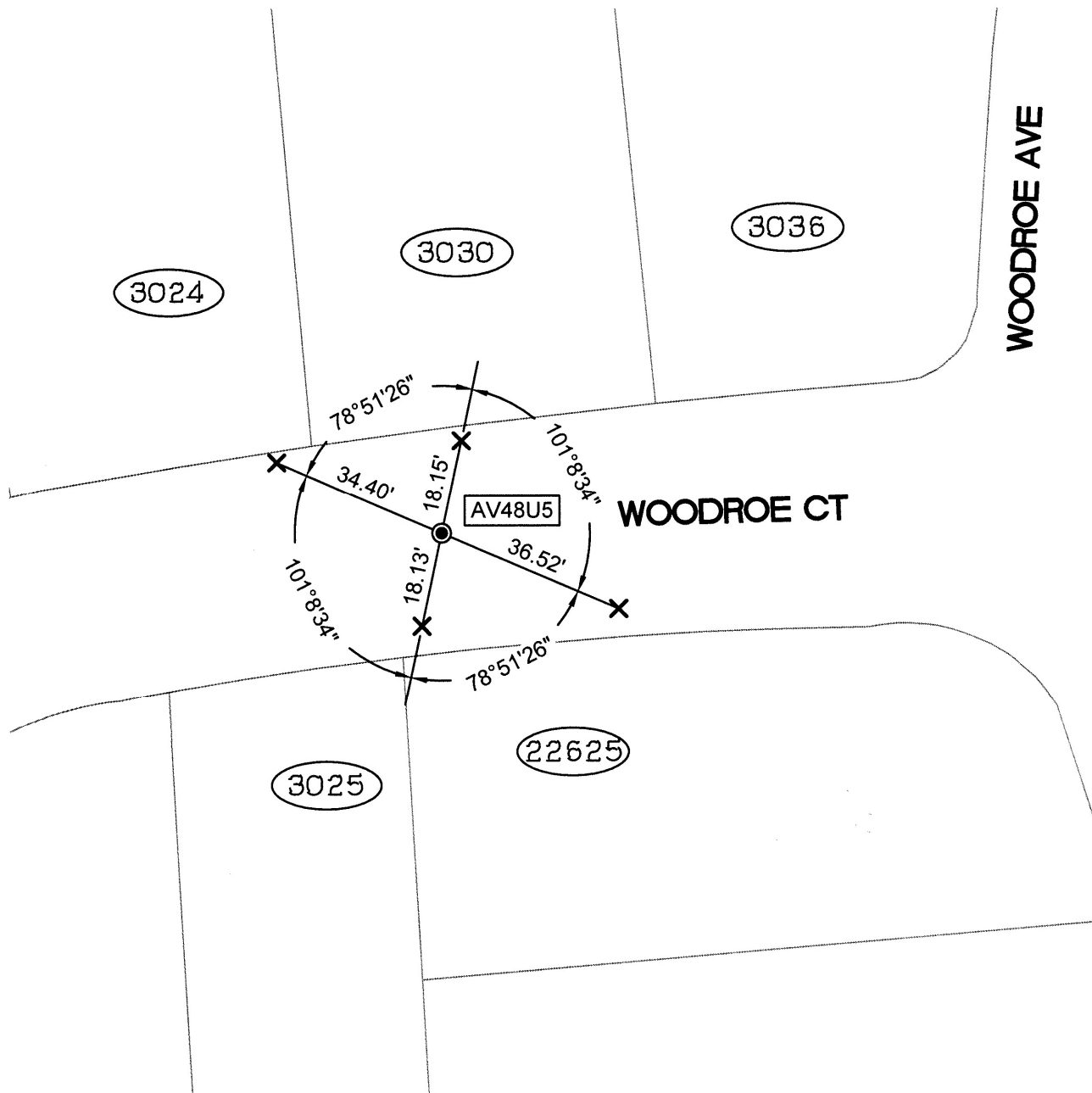


SPEC-2356-Pre

SCALE: 1"=30'

LEGEND

- FOUND ROD IN CONCRETE IN MONUMENT WELL
- ⊗ SET CUT CROSS IN WALK
- ✕ SET CUT CROSS IN CURB
- SET CUT CROSS IN DRIVEWAY
- SET REBAR & CAP STAMPED "CEI RP"
- AA### ALAMEDA COUNTY MONUMENT ID
- 19592 REFERENCE STREET ADDRESS



WOODROE AVE

WOODROE CT

AV48U5