

# Rank & File

MAY-JUNE 2008

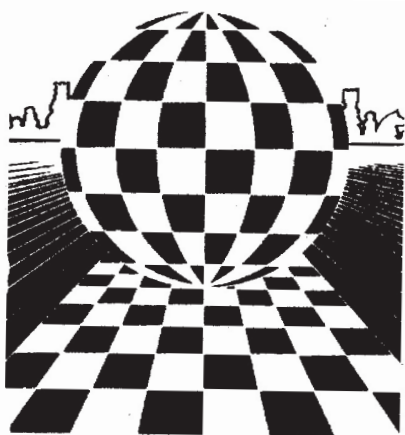
VOLUME XXXI, No. 3

\$3.00



Julian Landaw  
SCCF High School Champion





48<sup>TH</sup> ANNUAL

# PACIFIC SOUTHWEST OPEN

July 4-6, 2008

**\$8,000 Prize Fund!**

(based on 240 players, 50% of each prize guaranteed)

at the

## LAX Hilton

5711 W. Century Blvd., Los Angeles CA 90045

Sic Rounds — Swiss System

3-day schedule 40/2, SD/1; 2-day schedule rounds 1-3 G/60

Entry Fees: \$69 by 7-3, \$79 door

On-line entry: [www.westernchess.com](http://www.westernchess.com)

SCCF membership required of rated state residents (\$18, jr. \$10)

Registration: 9-10 a.m. 7-4, 2-day 8:30-9:30 a.m. 7-5.

Rounds: 3-day: 10:30-5 Fri-Sat, 10-4:30 Sun. 2-day: 10-12:15-2:30 Sat., then merges.

Entries: SCCF, c/o John Hillery, 835 N. Wilton Place #1, Los Angeles, CA 90038

HR: \$109 (310) 410-4000, mention chess. Parking \$8/day.

More details, advance entry lists:

[www.westernchess.com](http://www.westernchess.com)



## Open

1st: \$1400

2nd-5th: \$700-\$400-\$300-\$200

U2200: \$600-\$300-\$150

U2000: \$600-\$300-\$150



## Amateur

(Under 1800/unr)

\$600-\$300-\$150

U1600: \$500-\$250-\$150

U1400: \$400-\$250

U1200: \$150

Unrated: \$150

(Unrated may win Unrated prize only in this section)

## July 5

**PSW SCHOLASTICS.** 5-SS, SD/45. LAX Hilton, 5711 W Century Blvd, Los Angeles, CA 90045. Open to gr. 12-below. **In two sections: Open:** Trophies to top 5, top 3 U1200, top 2 Unrated. **Grade 6/below U1000:** Trophies to top 5, top 3 U700, top 2 Unrated. **Reg.:** 8:30-9:15. **Rds.:** 9:30-11-1:00-2:30-4. **EF:** \$16 if received by 7-3, \$20 door. **Inf:** John Hillery, [admin@westernchess.com](mailto:admin@westernchess.com). On-line ent: [www.westernchess.com](http://www.westernchess.com). **Ent:** SCCF, c/o John Hillery, 835 N. Wilton Pl. #1, Los Angeles CA 90038.

## July 6

**PSW HEXES.** 3-SS, G/90. LAX Hilton, 5711 W Century Blvd, Los Angeles, CA 90045. Six-player sections by rating. **EF:** \$20 if received by 7-3, \$25 door. \$\$ 40-20-10 each section. **Reg.:** 9:30-10:15 a.m. **Rds.:** 10:30-1:30-4:30. **Ent:** SCCF, c/o John Hillery, 835 N. Wilton Pl. #1, Los Angeles CA 90038, online at [www.westernchess.com](http://www.westernchess.com).



# Around the Nation



## Amateur Team Playoff

The four regional winners competed on line for the title of 2008 U.S. Amateur Team Champions on the Internet April 12. The South winners, "Foreclosure Doctors" (master Bruci Lopez and experts Jeffrey Haskel, Javier Gonzalez and Gilberto Luna), won the playoff. "The Foreclosure Doctors" got fast starts in both of their matches, winning the first two games against Eastern team 1. d4 in the semifinals and against Western champs "We Have Cox" in the finals. Top board Bruci Lopez, who was the highest rated player in the event, and third chair Javier Gonzalez went a combined 4-0, and Jeffrey Haskel and Gilberto Luno navigated toward a trio of draws to clinch each match. – *USCF news release*

## SCCF Election

The SCCF will be electing six members to its Board of Directors at the Southern California Open in September. If you are interested in serving, call or e-mail SCCF Elections Committee chairman Randy Hough (626-282-7412, randallhough@yahoo.com) by June 15. The SCCF is *your* organization – help us to make it better!

## 2008 Scholar-Chessplayer Awards

The Scholar-Chessplayer Outstanding Achievement Awards for 2008 were announced in April at the 2008 National High School Cham-

pionship by the USCF Scholastic Council. These scholarships are given to high school juniors and seniors who excel in academics, chess, and leadership. This year all five winners will receive equal \$1500 scholarships. These annual awards are given by the U.S. Chess Trust, the National Scholastic Chess Foundation, and the U.S. Chess Federation and are intended to encourage high school students who promote a positive image of chess. Congratulations to the winners and a special thank you to all of the students who applied.

The 2008 Scholar-Chessplayer Award Recipients are:

Sarkis Agaian, NY  
Jonathan Cox, AZ  
Benjamin Marmont, AZ  
Michael Sobin, NJ  
Adam Weser, NY

To apply for the Scholar-Chessplayer Award, you must be a current U.S. Chess Federation member and submit five copies of a completed application form, high school transcript showing all courses and grades, a letter of recommendation from a teacher, a letter of recommendation from a chess coach, an

## CONTENTS

AROUND THE NATION .....	3
6TH ANNUAL WESTERN PACIFIC OPEN .....	5
SUSAN POLGAR VISITS THE SOUTHLAND BY AL PENA.....	7
TACTICS BY TIM HANKS.....	8
CLUB DIRECTORY .....	11
HERE & THERE Club news, local tournaments, scholastic events and more.....	12
LATE NEWS: KAMSKY-TOPALOV .....	21
STATE CHAMPIONSHIP QUALIFIERS.....	21
UPCOMING EVENTS.....	22
CHESS QUIZ.....	24

essay of no more than 500 words describing the positive influence that chess has had on your life, and a recent photograph. The deadline for the next award, the 2009 Scholar-Chessplayer Award, is March 1, 2009. – *USCF news release*

## Junior Grand Prix

The USCF recently introduced a new “Junior Grand Prix (JGP).” Players born after 12/31/87 will be eligible for both the regular Grand Prix and the Junior Grand Prix. The JGP will have a special focus intended to promote the type of play most beneficial to the development of young talent, as follows:

1. The new grand prix awards JGP points only for scoring against players rated at least 100 points above you: 10 JGP points for each win and 5 JGP points for each draw. In sectioned events, you may need to play higher than your minimum section to have a shot at points.

2. JGP points are available only in events with time controls slower than Game/60.

### Other JGP Rules:

1. JGP events must be at least four rounds and USCF rated.

2. Other than entry fees and USCF dues, no charges over \$25 are permitted.

3. The tournament must have a TLA with sufficient detail to determine eligibility in the “Tournament Life” section of *Chess Life*. Games from matches are ineligible. The tournament must have a 2008 completion date and be submitted for rating by February 1, 2009.

4. If differing time controls are offered, the slowest must be slower than Game/60, and no round may be faster than Game/30.

5. Byes and other unplayed games earn no JGP points.

6. In determining whether an opponent is rated 100 points above a player, current ratings will be used. Note: On rare occasions, JGP point standings may change due to re-rates.

7. To earn points, a player must have a pre-event rating based on at least four games. Additionally, if in considering an individual game, the opponent has no rating or a rating based on fewer than four games, the opponent’s post event rating will be used, providing it is based on at least four games. Otherwise, no points can be earned from that game.

8. Conditions concerning JGP tournaments are subject to review and adjustment by the USCF Executive Director. Designation of tournaments as JGP events which require play at Game/60 or faster in most rounds is discouraged and may be disallowed.

9. For state awards, in the case of a player who changes states during the year, USCF reserves the right to assign the player to an appropriate state based on their tournament record.

10. Standings will be updated bimonthly in *Chess Life* and more frequently at the USCF web page.

Top prize includes free entry, \$1,000 of expense money to the 2009 U.S. Open, and a plaque. Prizes will also be awarded to the top 20 and top individual in each state. – *USCF news release*

**Photos:** Cover, p. 5: John Hillery. P. 7: Al Pena. P. 14: San Diego Chess Club.

## Southern California Chess Federation

President	Elliot Landaw
Vice President	Ron Rezendes
Secretary	Chuck Ensey
Treasurer	John Hillery
Executive Board	

Randy Hough  
Mike Nagaran  
Rick Aeria  
Jim Bullock  
Mick Bighamian  
Jerry Yee  
Essam Mohamed  
Takashi Iwamoto

### Rank & File

Editor John Hillery  
835 N. Wilton Pl. #1  
Los Angeles CA 90038  
rfeditor@westernchess.com

Publisher David Argall

### Contributing Editors

Jack Peters  
Tim Hanks  
Al Pena

### Contributors

Chuck Ensey  
Randy Hough  
Chris Roberts  
Cyrus Lakdawala  
Jerry Yee

### Subscriptions/Address Changes

Randy Hough, Membership Secretary  
P.O. Box 205  
Monterey Park CA 91754  
(626) 282-7412  
randallhough@yahoo.com

*Rank & File* — ISSN 8750-9164 USPS 738-230, published bimonthly by the Southern California Chess Federation, 1300 Ballista, La Puente CA 91744. Periodical postage paid at Industry, CA. POSTMASTER: Send changes of address to SCCF, PO Box 205, Monterey Park CA 91754. Subscriptions: \$18 adult, \$10 junior.

Copyright © SCCF 2008. One-time only publication rights have been obtained from signed contributors. All other rights are hereby assigned to the authors. The opinions expressed are strictly those of the contributors and do not necessarily reflect the views of the SCCF, its officers or members.



**Advertising Rates:** Full page \$80, half page \$45, 1/4 page \$25, 1/8 page \$15, back cover (3/4 page) \$80. (All rates are for camera-ready copy.) Flyer insert \$50 (advertiser must supply flyers). 50% discount for tournaments requiring SCCF membership. Display ads should be sent to the Editor, flyers to the Publisher (addresses at right). Payment should be sent with order to the Editor. SCCF reserves the right to reject any advertising.





# 6th Annual

The sixth annual Western Pacific Open, held at the LAX Hilton March 28-30, attracted a somewhat disappointing field of 91. But the 38-player Open section made up in quality for the lack of quantity, with three GMs and three IMs leading the field. GM Melikset Khachiyan was knocked out in round two by San Diego master Ron Bruno (see game below), but the remaining five titled players--visiting Philippine grandmasters Darwin Laylo and Mark Paragua and IMs Andranik Matikozyan, Enrico Sevillano and Tim Taylor – ended up on top with scores of 4-1. Next at 3½-1½ were rising young masters John Daniel Bryant and Julian Landaw, along with top expert Ryan Richardson.

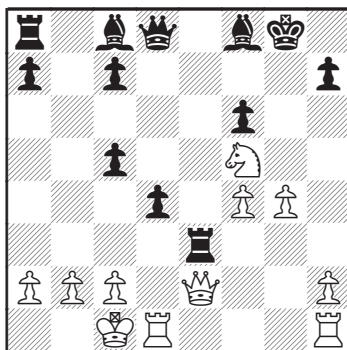
In other action, Fernando Sevilla scored 4½-½ to take the Premier (under-2000) section, while Gabriel Sisson topped the Amateur (under-1400) with 4½-½. Simone Liao took first in the Scholastic Open, and Shelley Anthopoulos, Darren Leung and David Minasyan tied in the Scholastic Reserve. The Hexes proved unusually popular, with 16 players in two sections. Craig Clawitter, Sergey Yurenock and Max Landaw tied for first in Section 1, while Zaven Khachiyan (father of the Melikset) took clear first in Section 2. John Hillery directed for Western Chess.

**Ron Bruno – GM Melikset Khachivan**

### 6th Ann. Western Pacific Open, Los Angeles 2008

**C63 RUY LOPEZ, Schliemann**  
**Defense**

1. e4 e5 2. Nf3 Nc6 3. Bb5 f5 4. Nc3 fxe4 5. Nxe4 Nf6 6. Qe2 d5 7. Nxf6+ gxf6 8. d4 Bg7 9. dxe5 0-0 10. Bxc6 bxc6 11. e6 Re8 12. Nd4 c5 13. Nf5 Rxe6 14. Be3 Bf8 15. 0-0-0 Re5 16. g4 d4 17. f4 Rxe3



18. Qxe3

Bb7 19.

Qe6+ Kh8

20. Rhg1

Bd5 21. Qa6

Rb8 22.

Rde1      Rb6

23. Qa4 Bc6

24. Qc4 Bd5

25. Qe2 Be6

26. Qe4 Qc8

Rg3 Bf7 28. M

30. Nf5 Kg8

33. Ne7+ Kg

Bxe7 36. Rxe8

38. Rh8+ Kf

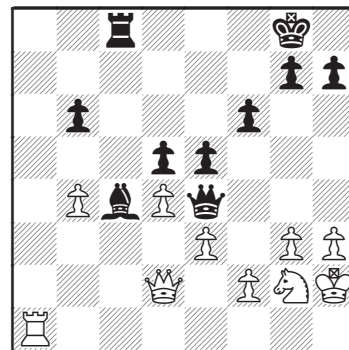
Kf8 41. Rh8-

R4h7+ Rg7 4

1011171 287



## RON BRUNO



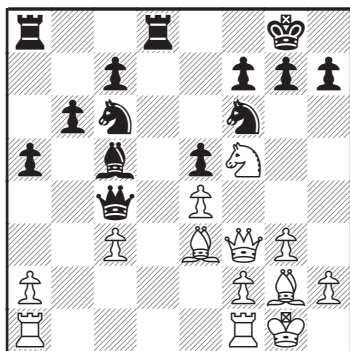
31. Ne1 Re8 32. f3 Qf5 33. g4 Qd7  
34. Ng2 Qd6 35. dxe5 Qxe5+ 0-1

**John Daniel Bryant – Joshua Gutman**

### 6th Ann. Western Pacific Open, Los Angeles 2008

### C00 FRENCH DEFENSE, Closed Variation

1. e4 e6 2. d3 d5 3. Nd2 Nf6 4. Ngf3 Nc6 5. g3 dxe4 6. dxe4 Bc5 7. Bg2 e5 8. 0-0 0-0 9. Qe2 a5 10. c3 b6 11. Nc4 Ba6 12. b3 Qe7 13. Nh4 Rfd8 14. Nf5 Qd7 15. Qf3 Bxc4 16. bxc4 Qd3 17. Be3 Qxc4



18. Nxg7 Bxe3 19. fxe3 Kxg7 20. Qxf6+ Kg8 21. Qg5+ Kf8 22. Qh6+ Kg8 23. Rf6 Rd6 24. Rxd6 cxd6 25. Rf1 Re8 26. Bh3 Ne7 27. Bf5 Nxf5 28. exf5 f6 29. Qxf6 Qxc3 30. Qg5+ Kf7 31. Qh6 Rg8 32. Qe6+ Kf8 33. f6 Qxe3+ 34. Kg2 1-0

**IM Enrico Sevillano – Takashi Kurosaki**

**6th Ann. Western Pacific Open, Los Angeles 2008**

**B22 SICILIAN DEFENSE, Alapin Variation**

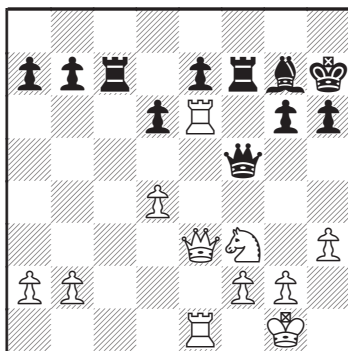
1. e4 c5 2. c3 g6 3. d4 cxd4 4. cxd4 d5 5. exd5 a6 6. Nc3 Nf6 7. Qb3 Bg7 8. a4 0-0 9. Bc4 e6 10. dxe6 fxe6 11. Bxe6+ Bxe6 12. Qxe6+ Kh8 13. Nge2 Nc6 14. 0-0 Nxd4 15. Nxd4 Qxd4 16. Be3 Qh4 17. Rad1 Rae8 18. Qd6 Ng4 19. Bd4 Ne5 20. Qb6 Rf5 21. Bxe5 Bxe5 22. g3 Qh3 23. Rd8 Rxd8 24. Qxd8+ Kg7 25. Qd7+ Kh6 26. Ne4 Qg4 27. f3 Qh5 28. Qd2+ 1-0

**IM Andranik Matikozyan – IM Tim Taylor**

**6th Ann. Western Pacific Open, Los Angeles 2008**

**B00 NIMZOVICH DEFENSE**

1. e4 Nc6 2. Nf3 d6 3. Bb5 Bd7 4. c3 Nf6 5. d3 g6 6. 0-0 Bg7 7. Re1 0-0 8. Nbd2 Ne5 9. Bxd7 Nxf3+ 10. Nxf3 Nxd7 11. d4 c5 12. Bg5 h6 13. Bh4 cxd4 14. cxd4 Rc8 15. Qd2 Kh7 16. Rad1 Nf6 17. Bxf6 Bxf6 18. e5 Bg7 19. e6 Qb6 20. exf7 Rxf7 21. Re6 Qb5 22. Rde1 Rc7 23. h3 Qd5 24. Qd3 Qf5 25. Qe3



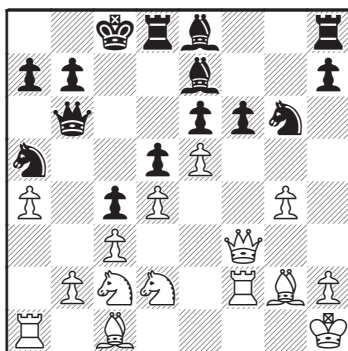
25. ... Be5 26. Nxe5 Qxe6 27. Nxf7 Qxf7 28. b3 Kg7 1/2-1/2

**Aram Kavoukja – David Portwood**

**6th Ann. Western Pacific Open, Los Angeles 2008**

**C02 FRENCH DEFENSE, Advance Variation**

1. e4 e6 2. d4 d5 3. e5 c5 4. c3 Nc6 5. Nf3 Qb6 6. a3 c4 7. g3 Bd7 8. Nbd2 Na5 9. a4 Bc6 10. Bg2 Ne7 11. 0-0 Nf5 12. g4 Ne7 13. Ne1 g5 14. f4 gxf4 15. Rxf4 Ng6 16. Rf2 0-0-0 17. Qf3 Be8 18. Nc2 Be7 19. Kh1 f6



20. exf6 Bxf6 21. Qxf6 Rf8 22. Qxf8 Nxf8 23. Rxf8 Qd6 24. Rf1 Bd7 25. Ne3 Rg8 26. Ra3 h5 27. gxh5 Rg5 28. Rf3 Rxh5 29. Nef1 e5 30. dxe5 Qxe5 31. b4 Qe1 32. Bb2 Nc6 33. Ra1 Qe2 34. Re3 Qf2 35. Rae1 Rg5 36. R1e2 Qf6 37. Nf3 Rh5 38. b5 Nd8 39. Ng3 Rh8 40. Nd4 Qg6 41. Bxd5 Qb1+ 42. Kg2 Bh3+ 43. Kf2 Bg4 44. Nf3 Qa2 45. Re4 Bxf3 46. Kxf3 Rf8+ 47. Kg2 Qb1 48. Rxc4+ Kd7 49. Ba3 Rh8 50. Re7# 1-0

## Prize Winners

### Open

**1st-5th:** IM Enrico Sevillano, IM Andranik Matikozyan, GM Mark Paragua, IM Tim Taylor, GM Darwin Laylo, 4-1; **U2400:** Julian Landaw, John Daniel Bryant, 3½-1½; **1st U2200:** Ryan Richardson, 3½-1½; **2nd-4th U2200:** Takashi Kurosaki, Michael Yee, Barry Lazarus, 3-2.

### Premier

**1st:** Fernando Sevilla, 4½-½; **2nd/3rd/1st U1800:** Dingchao Lu, Eric Zhang, Armen Samuelian, 4-1; **4th:** Steven Morford, David Cody Oldham, 3½-1½; **2nd-3rd U1800:** Cameron Lange, Cheston Gunawan, Donald Holz, 3½-1½; **1st U1600:** Danny Machuca, 3-2; **2nd U1600:** Saul Priefer, 2½-2½; **3rd U1600:** Steve Conant, Anna Karapetyan, 2-3.

### Amateur

**1st:** Gabriel Sison, 4½-½; **2nd:** Elizabeth Tenorio, 3½-1½; **3rd/U1200:** Stephen Andrew, Roger Seastedt, Robert Gardner, 3-2; **Unrated:** Richard Austrum III, 1½-3½.

**Scholastic Open: 1st:** Simone Liao, 5-0; **2nd-3rd:** Anderson Ju, Sean Manross, 3½-1½; **4th-5th:** Adrian Urias, Yusheng Xia, 3-2.

**Scholastic Reserve: 1st-3rd:** David Minasyan, Shelley Anthopoulos, Darren Leung, 4-1; **4th-5th:** Ankur Gupta, Norman Chu, 3½-1½.

**Hexes: Section 1:** Craig Clawitter, Sergey Yurenok, Max Landaw, 2½-½. **Section 2:** Zaven Khachiyani, 2½-½.





# Susan Polgar Makes Local Appearance

by Al Peña

To paraphrase from my company's press release: *Raytheon Company kicked off National Engineers Week, Feb. 17-23, with events coast to coast... Highlights include:*

-- NASCAR Driver Kevin Conway discussing the use of math in racing technology in El Segundo, Calif.;

-- Students in McKinney, Texas, learning about the engineering design process to build hovercrafts and fuel cell vehicles to transport eggs;

-- Students in Sudbury, Mass., using engineering design to compete in egg drop competitions; and...

Shucks, I missed the chance to hear math and NASCAR used in the same sentence but what our release missed was that on February 21, at Raytheon's El Segundo facility Event Center, Susan Polgar hosted a book signing and Q&A session and gave a lecture and 15-board simul exhibition. The lecture and Q&A session followed a showing of



**Book signing -- Susan Polgar signs a book for Al Peña**

the National Geographic documentary *My Brilliant Brain* which featured Polgar who is the first woman

to attain a men's GM title and is a member of the USCF's Executive Board. *My Brilliant Brain* is pretty interesting and is available for viewing on YouTube.



*Simul setup at front of Raytheon Event Center*

Raytheon's Event Center was filled to capacity (about 300 people) and an overhead camera was set up to allow the audience to view each move of the simul in real time. Susan beat all 15 opponents (she holds the world record at 326 boards and she only lost three in that one) pretty easily, including this writer. Susan was a delightful guest which made for a delightful afternoon. I hope Raytheon hosts a similar event next year but if Tim Hanks has his way, Northrop-Grumman will.

# Tactics

by NM Tim Hanks

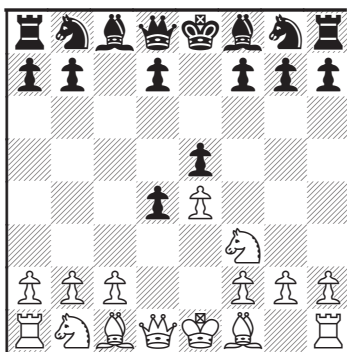


Chess tactics play an important role in the basis of chess game planning and move execution. Right from the opening moves players must be prepared to enforce and combat chess tactics. There is no “downtime” or moment to hesitate. Just like in boxing your opponent is coming out with all intentions to knock you out as fast as possible. Every move you make plays into the dynamics of the position and constantly create tactical opportunities. The more you study and master chess tactics the easier you can handle almost any position in your games. By becoming more familiar with various tactical motifs and tactical themes, such as deflections, forks, pins, skewers, double-attacks, etc. you’ll be better prepared to execute them (and avoid them) in your own games.

Many times I walk around the tournament halls observing the first opening moves of games. Incredibly on just about every occasion I would notice tactical mistakes, usually within the first 5 – 10 moves of the game. Many are due to just plain oversights and result with the loss of a pawn. Others are due to clever opening traps that result in the loss of a piece and sometime more. Most if not all could be avoided by doing a safety check and simply taking your time and paying attention. So many players spend weeks preparing for a tournament. They may spend many hours a day reviewing games, practicing online, reviewing lines, attending tutoring session and more. Yet... with all the preparation they still fall victim to tactical carelessness – right at the beginning of the game. This is why I’m constantly explaining to my students to spend more time reinforcing their tactical awareness. Studying openings and learning lines and variations means nothing when your opponent takes you “out-of-book” in the early stages and you’re left “on-you-own” to progress

to the middlegame. So many people memorize lines instead of opening strategies and ideas then “later”, when there’s no more “book,” they appear strategically helpless. With poor tactical understanding to reinforce their games they often fall victim to 2 or 3 move combinations that could have been easily neutralized. Here’s an example I witnessed recently in a tournament. See Position No. 1. The game started 1. e4 e5 2. d4 cxd4 3. Nf3 e5!?

Problem No. 1. White to move.



The opening is a Sicilian Defense which both players have

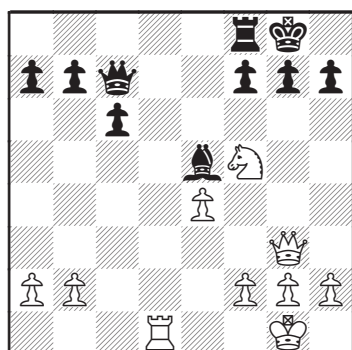
played and seen hundreds of times. In this game Black’s last move sets a lethal trap. White, acting rather nonchalantly, played 4. Nxe5?? (correct was 4. c3 or 4. Bc4) and Black responded immediately with 4. ... Qa5+. At first White looked to move his pawn to c3 ... but then his expression went from being calm to a state of shame, and then finally anger as he noticed his Knight on e5 was hanging. Usually this kind of opening blunder is very hard to recover from and the emotional impact leads to further mistakes. In this case the game ended quickly as White became very reckless in an attempt to get compensation but instead blundered more material.

I developed a tactical review session to examine just how well players pay attention during their games. I gathered a group of students; all USCF-tournament experienced and rated from about 1400 to 1800. I tested them to find the best move in a dozen or so different positions. Each player would write down the move they would make and afterwards we would go over their choices. To test how well they were paying attention I mixed in a variety of positions including some subtle “mate-in-one (!)” examples. Afterward, upon review I discovered the players were more interested in gaining material and several did not see the mates-in-one. The post-review of their analysis and thinking patterns revealed why many winning moves are simply overlooked in their games. Many players get so caught up with looking at only one thing (and only their plans) they simply did not consider



more alternatives or tactical ideas. Let's review the following position number 2 to elaborate on this a bit more.

**Position No. 2. White to move. What would you do?**

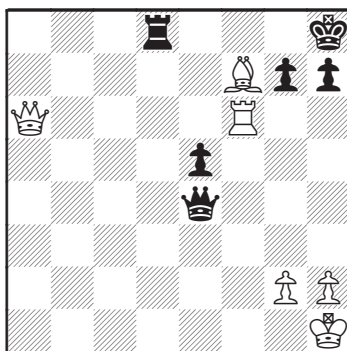


Material is equal. However, White's Queen and pawn on b2 are attacked by the Black Bishop. White would like to deflect the Bishop from the a1-h8 diagonal to inflict checkmate at g7. He considers 1. f4 his main move. He also ponders two other alternatives: move the Queen to a3 or move the Queen to g4. Each of these options, although interesting, will result in the game going on for many more moves with chances for both sides. By studying tactics and those tactical motifs employing Knight forks and deflections you train yourself to perhaps find winning combinations more easily. In this position White has a winning combination that will quickly leave Black totally lost, or worse checkmated very quickly. In each of the moves White considered (i. e. f4, Qa3 and Qg4) Black will be able to defend and get counterplay. I'll leave this as an exercise for the reader to work out. The winning line, however, is very clear and most importantly, totally forced. It goes **1. Nh6+ Kh8 2. Qxe5! Qxe5** (other moves like 2. ... Qb6 lose as well) **3. Nf7+ (the point) Kg8** (not 3. ... Rxf7?? since 4. Rd8+ quickly leads to mate) **4. Nxe5** and White emerges a full piece and pawn ahead with a very easy endgame to win. There is no debate about the resulting position, which occurs with the other

choices. Computers are relentless for punishing humans with these kinds of combinations. It's clear that with solving tactics problems and diligent practice you can drastically improve to find these kinds of winning moves in your games as well.

Many of my students provide games (mostly from the ones they've lost) for me to analyze and give commentary and feedback. If there's one common thing I'm noticing is that for many of them they keep losing games they should have won. Surprisingly, most of the time, they did not even realize they had a won game or were clearly winning at some point. One of the most annoying things in chess is losing games we should have won.

**Position No. 3. It's Black to move. How would you proceed?**



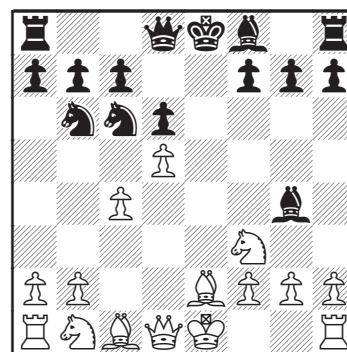
In a quick overview of the position we see that White is up a piece for a pawn, the White Rook is attacked on f6 and the White back rank is "attractively" weak. Black played **1. ... Qb7** (a good attempt to win, by trying to execute a deflection motif). Now Black threatens both ... Qxa6, and ... gxf6. Unfortunately, the move is inaccurate and allows White to parry all threats and escape with a won game by playing **2. Qf1** (of course not 2. Qxb7 as Rd1+ leads to mate) as Black cannot now play 2. ... gxf6 owing to 2. ... Qxf6#. How sad for Black. Thus White retained his piece advantage and went on to win the end game. Now let's review ... if Black had played **1. ... Qc6!** (same

deflection idea) then White would be lost. For example if 2. Rxc6 or Qxc6 then Black wins with 2. ... Rd1+ and mate. Or if White replies 2. Qf1 then 2. ... Qxf6 with a very easy win for Black. Try for yourself against your chess computer to be sure you know how to reel in the point. Naturally, it's always easy for people to review and critique games and moves afterwards. For all I know Black had 1 second to make the time control. Given more time he might have found the winning combination. If there's one thing each and every one of us will experience, it's missing winning combinations in our games. We're human, not computers, and no matter how hard we try to find tactical shots, especially with little time, we are all prone to making mistakes and missing better moves. For some people it's very hard to get over games they clearly should have won. It usually takes up to winning a game they should have lost for them to start to feel better.

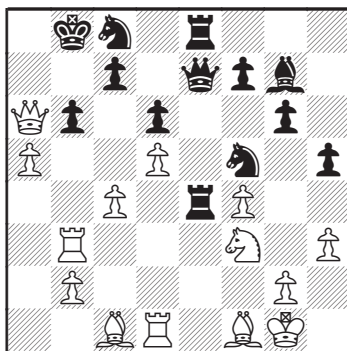
In my featured game its Karpov vs Alburt 1980, from the Malta Olympiad. This is an exciting game with great tactics that emphasizes the importance of having the initiative and how to utilize the clearance motif for a winning attack.

**Karpov – Alburt  
Malta Olympiad, 1980  
B06 ALEKHINE'S DEFENSE**

**1. e4 Nf6 Alekhine's Defense. 2. e5 Nd5 3. d4 d6 4. Nf3 The Modern Variation – solid and reliable. 4. ... Bg4 5. Be2 Nc6 6. c4 Nb6 7. exd6 exd6 8. d5**



8. ... **Bxf3** If 8... . Ne7 9. 0-0 Ng6 10. a4 a5 11. Qd4 Bxf3 (if instead Black plays 11. ... Qd7 12. Be3 Nxa4 13. Nbd2 Nb6 14. Rfe1 a4 15. h3 Bxf3 16. Nxf3 0-0-0 17. Qd2 White has the advantage, with Queenside attacking chances) 12. Bxf3 Ne5 13. Be2 Qf6 14. Be3 Be7 15. Nc3 0-0 16. Ne4 Qh4 17. f4 Ng6? 18. f5 Ne5 19. f6 Bd8 20. Bg5 and White wins. 9. **Bxf3 Ne5** 10. **Be2** Solid and patient, typical of Karpov. 10. ... **Qh4!**? Another line is 10. ... Be7 11. Be3 0-0 12. Nd2 c6 13. dxc6 bxc6 14. 0-0 d5 15. c5 Nbd7 16. Rc1 Qa5 17. Nb3 Qxa2 with a battle. 11. **0-0 h5** Very aggressive. Black plans to castle on the Queenside and create a King-side wing-attack. Let's see which attack will develop the fastest. 12. **Nd2 g6** If Black tried 12... Be7, then 13. f4 Ng6 14. Ne4 0-0-0 15. Bd2 wins for White. 13. **f4 Ng4** 14. **Nf3** Gaining time and solidifying the Kingside. 14. ... **Qf6** 15. **Re1 0-0-0** 16. **a4** Here we go. Time to get busy. 16. ... **a5** Hoping to restrain the White Queenside pawn storm. 17. **Qd2 Bg7** If 17. ... Bh6 18. g3 and White is still better. 18. **h3 Rde8!** 19. **Bf1** Not 19. hxg4 hxg4 20. Ng5?, which just loses to 20. ... Qd4+, or if 20. Ne5 then 20. ... Qh4 21. Bxg4+ f5 22. Bh3 dxe5, and Black has a strong attack. Karpov remains alert to sucker punches. 19. ... **Nh6** 20. **Qxa5 Nf5** If 20. ... Rxe1 21. Qxe1, White retains a nice edge with a clear pawn advantage. 21. **Rd1 Kb8** Another try is an Exchange sacrifice, 21. ... Re3 22. Bxe3 Nxe3 23. c5 Nxd1 (or 23. ... dxc5 24. Rd2 Qxf4 25. Qxc5 Nxf1 26. Rxf1 Nxa4 27. Qb5 Nb6 28. d6) 24. cxb6, and White is clearly better. 22. **Ra3!** This strong move neutralizes all Black attacking plans. Watch how White never looks back after this. 22. ... **Re4** (Black's "attack" has run dry. 23. **Qb5 Nc8** 24. **Rb3** Inflicts light-square weaknesses that will be fatal. 24. ... **b6** 25. **a5** Applying constant pressure. 25. ... **Qe7** 26. **Qa6 Re8**

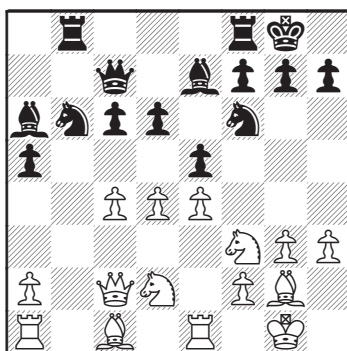


Karpov recognized the light-square weaknesses around the Black King and continued with a clearance maneuver **27. c5!** This cleverly clears the way for the Bishop on f1 to enter the attack. **27. ... dxc5** 28. **Bb5 c6** There is no defense, as White threatened Bc6 with an unstoppable mate. **29. Bxc6 Nd4** 30. **axb6 Nxf3+** 31. **Rxf3 Re1+** 32. **Rxe1** and Black resigned since mate cannot be stopped.

One interesting thing about this game is that Karpov never developed his Queen Bishop yet still won convincingly. It was like winning a boxing match by leaving out his uppercut.

Improving your ability to calculate and visualize tactical combinations takes practice. Tactical problem solving will help in this development. Avoid moving the pieces when solving problems so as to strengthen your over-the-board play. Be alert, play sharp and of course always remember to do your safety check. Good luck and happy solving! Solutions on page 20.

Position No. 1. White to move.

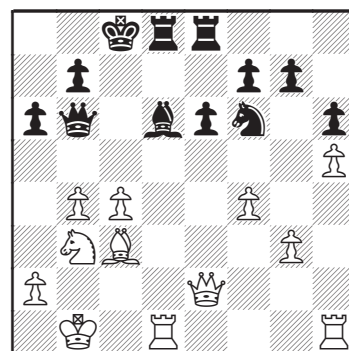


White's plan to win a pawn by means of a "double attack" by playing 1. dxe4 dxe4 2. Qc3 attacking Black pawns on a4 and e4 is:

- a) Correct
- b) Flawed

Prove your answer with analysis and a variation.

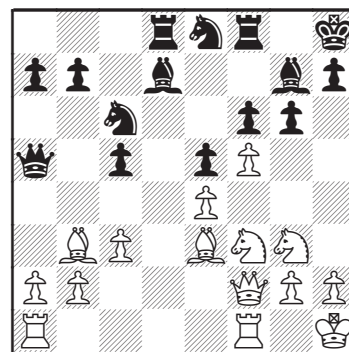
Problem No. 2. Black to move.



- a) 1. ... Bxb4 is unclear.
- b) 1. ... Bxb4 is incorrect.
- c) 1. ... Bxb4 is correct and Black is better.

Justify your answer with a variation and / or analysis.

Problem No. 3. White to move. How would you evaluate this position?



- a) Black is slightly better.
- b) Black is winning.
- c) White is winning.
- d) White is slightly better.

Justify your answer with a variation and/or analysis.

# Where to Play Chess



**ARCADIA.** The Arcadia Chess Club meets at 6:30 p.m. Mondays in the Senior Citizens building, 405 S. Santa Anita Ave. Continuous rated tournaments, casual play. Dues: \$10/year, \$7.50/year for juniors and seniors. Call Fred Brock at (626) 331-1638 or Mel Clark at (626) 447-9355. Web site: [www.geocities.com/arcadiachessclub](http://www.geocities.com/arcadiachessclub).

**ARCADIA.** A youth group meets for casual play 6:00 p.m. to 8:00 p.m. Fridays in Diversity Educational Center, Suite A, 1012 S. Baldwin Ave. For students in kindergarten, elementary school and junior high. Occasional Sunday tournaments. Free. Call Roel Sanchez at (626) 254-9951. Web site: [www.diversityeducationalcenter.com](http://www.diversityeducationalcenter.com).

**BISHOP.** Kava Coffee House, 206 N. Main St., welcomes chessplayers. Chessboards are available at all

hours. Call (760) 872-1010.

**BURBANK.** A group meets Wednesdays from 1:00 p.m. to 4:00 p.m. at the Joslyn Center, 1301 W. Olive St. (at Griffith Park Drive). Casual play, ages 55 and up only. No dues. Call (818) 238-5353.

**BURBANK.** A group meets Fridays from 5:15 p.m. to 9:30 p.m. in McCambridge Park, 1515 N. Glenoaks Blvd. Casual play, tournaments possible. Call Emil Klimach at (818) 845-1104.

**CARLSBAD.** A group meets 12:30 p.m. to 4:30 p.m. Tuesdays in the Carlsbad Senior Center, 799 Pine Ave. Casual play. Most attendees are over age 55, but younger adults are welcome. No dues. Call (760) 602-4650.

**CLOVIS.** The Maharlika Chess Club meets 5:00 p.m. to 11:00 p.m. Fridays in Carl's Jr. at 818 W. Shaw Ave. in Clovis, CA. Casual play, blitz, occasional tournaments. No dues. Call Sam Roamboa at (559) 222-4354.

**COLTON.** A group meets 8:30 p.m. to 12:30 a.m. Friday nights in a private room at Denny's restaurant, 160 W. Valley Blvd. Casual play, blitz. Call Denny's at (909) 824-2132.

**CORONA.** Chessplayers are invited to play on Tuesdays, 6:00 p.m. to 10:00 p.m., at All About Coffee, 2276 Griffin Way, Suite #108. Casual chess, blitz (bring your clocks). Call Steven Burleson at (951) 549-6710.

**COSTA MESA.** The Chess Center meets in the Odd Fellows/Rebekah Hall, 2476 Newport Blvd. at 7:30

p.m. Tournaments Wednesdays, Fridays, Sundays, casual play Thursdays, monthly Octos tournaments on Saturdays, Chess classes for children, scholastic tournaments, casual play, lectures, lending library of chess videos, chess supplies for sale. For information, call Al Massip at (949) 646-6696. Web site: [www.chess-center.com](http://www.chess-center.com).

**ENCINITAS.** A group meets 12:30 p.m. to 3:30 p.m. Mondays in the Senior Center, 1140 Oakcrest Park Drive. Casual play, ages 55 and up only. No dues. Call (760) 943-2250.

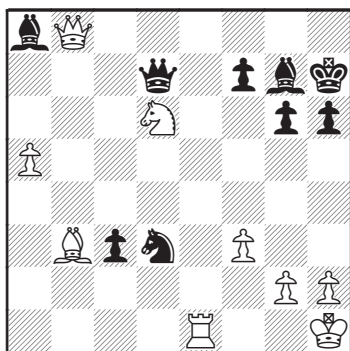
**ESCONDIDO.** The Palomar Chess Club meets at 7 p.m. Thursdays in the Escondido Bridge Center, 2427 S. Center City Parkway. Continuous rated tournaments. Call John Goddard at (760) 591-0200 or [palomarchessclub@cox.net](mailto:palomarchessclub@cox.net). Web site: [www.sdchess.com](http://www.sdchess.com).

**ESCONDIDO.** A group meets noon to 4 p.m. weekdays in the Senior Center, 210 Park Ave. Casual play, ages 50 and up. No dues. For information, call (760) 839-4688.

**FRESNO.** The Fresno Chess Club meets 6:00 p.m. to midnight Mondays in Carl's Jr. restaurant, 3820 N. Cedar. Rated tournament in May, non-rated quick chess quads, casual play, chess library, newsletter. Dues: \$15/year, \$8/year for students, women, and those who live outside Fresno County. Contact Aaron Hise at (559) 228-8089 or send a message to [aaron.hise@sbcglobal.net](mailto:aaron.hise@sbcglobal.net).

**GARDEN GROVE.** Chess Palace has moved to 12872 Valley View, Suite 5. The club is open 6:00 p.m. to 10 p.m. Wednesdays and Fridays, 10:30 am to 10:00 p.m. Saturdays, and 11:00 am to 7:00 p.m. Sun-

## Problem No. 4. Black to play.

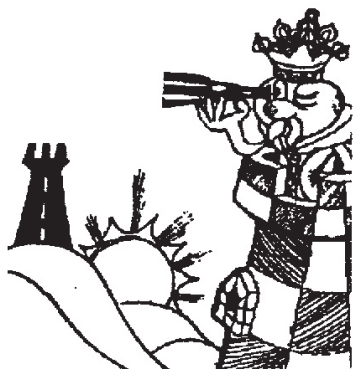


- a) White is winning.
  - b) Black is winning.
  - c) The position is roughly equal which chances for both sides.
- Validate your move selection with analysis.

*Continued on page 18 ...*



# HERE & THERE



## Super State Scholastics

March 1-2

An total of 218 players competed in the Super States tournament, despite a last-minute change of venue to Huntington Beach. Julian Landaw, Derek Tan and Jared Tan tied for first with 5-1, with Landaw taking the State High School Championship title on tiebreak. the three highest-rated entrants, led the high school section with 5-1 scores. Landaw will represent Southern California at the Denker Tournament of High School Champions in August, while top girl Nisha Deolalikar will be invited to the Susan Polgar National Invitational for Girls.

Robert Xue scored 7-0 in the Junior High. Other winners included Christopher Kao (K-6), Adam Stanford-Moore and Christopher Siegrist (K-6 under 850), Daniel Mousseri (K-3), Mitchell Wang (K-3 under 550), and Winston Zeng (K-1). Joe Hanley directed.

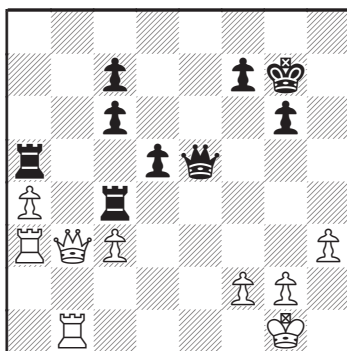
**Tianyi He (2078) – Julian Landaw (2338)**

**So. California HS Championship, Huntington Beach 2008**

**C45 SCOTCH GAME**

1. e4 e5 2. Nf3 Nc6 3. d4 exd4 4.

Nxd4 Nf6 5. Nxc6 bxc6 6. Bd3 d5 7. Nd2 Bc5 8. 0-0 0-0 9. e5 Bg4 10. Nf3 Nd7 11. h3 Bxf3 12. Qxf3 Nxe5 13. Bxh7+ Kxh7 14. Qh5+ Kg8 15. Qxe5 Re8 16. Qc3 Qd6 17. Bf4 Qxf4 18. Qxc5 Qf6 19. c3 Re2 20. b3 a5 21. a4 # 21. ... Qe6 22. b4 Re4 23. bxa5 Rc4 24. Qa3 Qf6 25. Rfc1 Rxa5 26. Qb3 Kh7 27. Qc2+ Qg6 28. Qd1 Qg5 29. Qc2+ Qg6 30. Qd1 Qf5 31. Ra3 g6 32. Qb3 Qe5 33. Rca1 Kg7 34. Rb1



34. ... g5 35. Qc2 g4 36. hxc4 Rxc4 37. Rb4 Qe1+ 38. Kh2 d4 39. Kh3 Rag5 0-1.

## Diversity Winter Scholastics

Rebecca Sanchez defeated Aaron Householder and Adrian Chang in a speed chess playoff for first place in the Diversity Winter Scholastics, held February 24 at the Diversity Educational Center in Arcadia. Rianne Sanchez and Sara Zhao also won sections of the 25-player tournament.

## Pasadena Chess Club

The Pasadena Club Championship, ending in March, attracted 48

players, the best turnout since 1992. The clear winner was 14-year-old Tianyi He, with 5½ points out of 6. Nathaniel Lagemann took second with 5. Class winners included Gregg Fritchle (Under 2000, with 4 points), Cheston Gunawan (Under 1800, with 3½), Roberto Queiro (Under 1600, with 3½), Christopher Hung and Thomas Hogue (Under 1400, with 2½), and Willy Mapacpac (Unrated, with 4).

The club meets Friday nights at 7 pm, Pasadena Senior Center, 85 E Holly St. It will begin a new six-round tournament, the Pasadena City Championship, on April 11. For information call Randy Hough, (626) 282-7412. – *Randy Hough*

## West Valley Chess Club

The West Valley Chess Club's Tax Time Swiss concluded on 3/27. There were 62 players in the 6 round event. Jerry Yee was the club TD of the event which had 3 sections. In the Open section, 13 year old Expert Michael Yee took clear first with an undefeated 5/6 score. Shemei Postrero won the Amateur section(Under 1900) and 8 year old phenom, Daniel Mousseri won the Booster section(Under 1500). Runner up section winners were Nathaniel Lagemann, Harold Deutscher, and Alexander Allins. The club's next event, the WVCC Spring Swiss, begins on April 10th. The club meets at the West Valley Jewish Community Center in West Hills. For info contact Jerry Yee at jyee6@socal.rr.com or call 818-915-5572. – *Jerry Yee*

## La Palma Chess Club

In February, W. Leigh Hunt and Mehrdad Miralaie shared first place with 4-1 scores in the Fische-randomish Swiss. Sunil Deolalikar, Dr. Harold Valery and Andrew Kao received class prizes in the 34-player tournament.

Craig Faber and Mehrdad Miralaie tied for first place in the Galactic Section of La Palma Chess Club's 2nd annual 6 round Undisputed Milky Way Chess Championships Swiss. The winners were both undefeated, only giving up a draw to each other. Faber was awarded the 1st Place trophy on tiebreaks. Other prize winners were Chris Roberts, newcomer Michael Brown, and Yoshio Dupree. In the Earth Section, Ernesto Soto was won first place with an undefeated score of 5. Robert Escalante and Donovan Dunn were 2nd and 3rd places, respectively. Other prize winners were Ronald Duff and Daniel Rozsa. No one claimed either the Best (Chevy)Nova or Best Alien prize. The 42-player event ended March 4 and was held at La Palma's Central Park. For complete standings, games, pictures, and a full schedule of events see the club's website at [www.lapalmachess.741.com](http://www.lapalmachess.741.com). – *Chris Roberts*

## Chess Palace

March 16, 2008

Jonathan Wilkinson won the Amateur Open Chess Palace in Garden Grove, while Timothy Chou went topped the second section. Chess Palace is located at 12872 Valley View, Suite 5. The club is open 6:00 p.m. to 10 p.m. For hours and information, call the club at (714) 899-3421 or Alfred Ong at (562) 598-5099, or go to [www.chess-palace.com](http://www.chess-palace.com).

## AAA Scholastic

March 22, 2008

Brendyn Estolas and Aram Kavoukjian tied for first with 4½ –½

in this 94-player event, held at the First Lutheran Church in Glendale. Artiom Ambartsoumian scored 5-0 in the K-7, and Andrew Household-er(5-0 in K-3. Harut Keshishian directed.

## Ventura County Chess Club

In February, Expert Tony Miller won the championship of the Ventura County Chess Club for the ninth consecutive year by defeating Alan Bishop, 3½-2½, in a match. The Ventura County Chess Club meets on the first Tuesday, the second Monday, and the later Tuesdays each month in the Church of the Foothills, 6279 Foothill Rd. For incorporation, call Jimmy Sweet at (805) 659-0356 or Chuck Smith at (805) 654-8472. Web site: [www.vcchess.com](http://www.vcchess.com).

## Santa Monica Bay CC

William Lykke scored 3½-½ to win the 2008 championship of the Santa Monica Bay Chess Club, ending in April. Lykke, a Class B player ranked ninth in the 14-player field, upset two higher-rated opponents. Kasey Perkins and Robert Sale tied for second at 3-1. For more about the club, see [geocities.com/santamonica-bay-chess-club](http://geocities.com/santamonica-bay-chess-club).

## Exposition Park Chess Club

On March 2, Marc Conde, Ju-rado Feliciano, Vartan Ghazarian, Daniel Dudley and Joshua Stern topped sections in the monthly free tournament at the Exposition Park Chess Club. Winners of the April 6 event, winners were Gem Malinao, Jose Quiroz and Dave Fernandez. For photos of the club, see [chess.expoparkla.com](http://chess.expoparkla.com). The club meets every Sunday afternoon in the public library, 3665 S. Vermont Ave. in Los Angeles.

## Western States Scholastic

A record of 378 players competed in the sixth Western States Scholastic, held April 12-13 at the Ventura Beach Marriott. Winners by grade: Sona Baghadasaryan, high school; Daniel Giordani (who learned to play only 11 months ago), junior high; Brett Gonzalez, Grade 6; Adrian Chang and Omar Wiseman, Grade 5; Jonathan Gunn, Grade 4; Daniel Lin and Shyam Gandhi, Grade 3; Evan Anthopoulos, Daniel Hadawi, Andrew Negus, and Brett Wong, Grade 2; Winston Zeng, Grade 1; and Eli Minoofar, Annie Wang and Bryce Wong, kindergarten. In addition, Vincent Huang won an invitational section for high-rated students. Harut Keshishian directed.

## 2008 SCCF Senior/Junior Open

This event, held at the San Diego Chess Club April 19-20, was well attended, with 53 players, up from 44 last year. This is the second year we had a "Junior" section to go along with the "Senior" section, and with better publicity this year and probably just worth of mouth from last year, both sections had a good turnout. True, we fell short of the hoped for 60 players to cover the prize fund, but thanks to some generous donations by several players and the SDCC itself, the full prize fund was paid anyway. All except for the Over 80 Years Old Prize, which went unclaimed again this year. The 6 age-based prizes made this event different from any other and we think everyone enjoyed it. With a large spread of ratings in each section, there were plenty of chances for upsets, and our players did not let us down.

In Round 1 there were 3 upsets: Bill Conrad (1740) won against Leonard Sussman (2084), Ronaldo Salenga (1680) beat Ed Baluran

(2012) and Arsenio Caccam (1500) upset Rick Dyberg (1891). Bill and Arsenio (also known as “Pan”) went on to win prizes by the end of the event. Pan caused quite a stir by coming to the event in tap shoes which clicked loudly every time he moved!! Several players were visibly upset with this weird distraction, in particular, the normally mild-mannered John Funderburg, who just about blew a gasket. Why anyone would do such a crazy thing as wear tap shoes is still a mystery. Eventually Pan was coerced to remove the offending shoes!

In Round 2 the only upset was when Ronaldo Salenga won against Tom Fries (1900). Then came Round 3, and three games in one day is too much for some players, so 7 out of the 28 players took byes. The top 2 boards saw upsets when Carey Milton (2010) won a fine game from Rick Aeria (2116) and then on board 2, Phil Roth (1975) knocked off John Rinaldo (2081). Phil went on to win the U2000 prize. Bill Conrad pulled off another upset, defeating the somewhat rusty Prisiliano Padilla (1890), who hadn’t played in a few years. But chess is like riding a bicycle right?

In Round 4, there were no true upsets, but Bill Conrad struck once again, earning a draw with David Delgadillo (1840). It was great to see Bill doing so well, he has been a big supporter of the Senior Open in the past, donating as much as \$500 towards the prize fund in hopes of boosting attendance or getting more famous masters to play. The other “upset” in the fourth round was Daniel Collins (1875), who earned a draw with Leonard Sussman (2084). This was not Lenny’s event, he was shut out of the prize fund this year.

In the last round Carey Milton, who had won four in a row, finally lost to NM Romeo Ignacio, who took home the first place prize of \$300. Rick Aeria lost the battle for the U2200 prize when he fumbled a won game to the always dangerous Ed Baluran. Dennis Saccuzzo

drew with John Rinaldo and they ended up splitting the Third Place and Best Over 60 prize. Bill Conrad continued his amazing run and drew with Tom Fries. Tom split the Best Over 70 prize with his friend Tony Pabon of Northern California, who drew with Lenny Sussman in the last round. I, Chuck Ensey, got very lucky and got an upset win against Rick Dyberg when he hung his Queen in time trouble. I was winning earlier, but he fought back well and after a bad blunder by me, he was totally crushing me until he made his big mistake. Both blunders were made after moving way too fast, thinking only a few seconds. Isn’t that when it is most likely to blunder?? Duh, but we players continue to make this mistake of moving way too fast over and over again... I am just as guilty as Rick and was very lucky in that game. I split the U1800 prize with Bill Conrad (see the complete prize list below).

#### SENIOR (Over 50 years old) SECTION

1st Place, \$300, Romeo Ignacio (4 ½)  
 2nd Place/BU2200, \$150 each, Carey Milton (4) and Ed Baluran (4)  
 1st Under 2000, \$150, Phillip Roth (4)  
 3rd Place/Best Over 60 years old, \$75 each, Dennis Saccuzzo (3 ½) and John Rinaldo (3 ½)  
 2nd U2200, \$25 each, Rick Aeria (3) and Bob DeFore (3)  
 2nd U2000, \$25 each, Prisiliano Padilla (3) and Daniel Collins (3)  
 1st Under 1800, \$100 each, Bill Conrad (3) and Chuck Ensey (3)  
 Best over 70 years old, \$50 each, Thomas Fries (2 ½) and Tony Pabon (2 ½)  
 1st Under 1600, \$150, Arsenio Caccam (2)  
 2nd U1600 \$50, Morgan Fox (1 ½)

#### “JUNIOR” (Under 50 years old) SECTION

The big story here was the surprise appearance of GM Darwin Laylo of the Phillipines. And also the great performance by some of our younger players. There were no upsets in Round 1, but in the second round 10 year old Varun Krishnan (1833) defeated Ignacio Sainz (2105). And 9 year old Michael Chen (1483) was beating Michael Taylor (1859) but fell for a spectacular stalemate ploy at the end of the

game and had to accept a draw. In Round 3, only 3 players took the night off with a bye, so I guess the younger set is harder



than the old **GM DARWIN LAYLO** folks! There

was only one minor upset in this round when Jesse Orlowski (1848) beat Michael Taylor (1859). In the next round the following morning, Jesse drew with the higher rated John Badger (1893). Another minor upset was Fausto Robles (1892) winning against Daniel Grazian (1918). Nathaniel Lagemann (1962) also drew with Ignacio Sainz (2105). But the big story was on the top 2 boards where John Bryant (2334) drew with GM Darwin Laylo (2443 USCF, I think he is higher in FIDE). On board 2, Varun Krishnan defeated Giovanni Carreto (2095).

So in the final round Varun played the GM! Wow, what a tournament for Varun, who came on Saturday, not even realizing there was a weekend event, so he wasn’t prepared, but he played great! The only significant upset in the last round was Giovanni Carreto winning over John Funderburg (2151). Bruno and Bryant drew, so the GM took the top prize, but everyone was happy with the results, well almost everyone. There were so many prizes, it seemed like almost everybody won something!

We hope that next year the event will be an even bigger success. Thanks to everyone for playing and showing good sportsmanship throughout the event. It’s always great to see the playing room filled with happy chessplayers on a weekend. We missed a few of the usual seniors who couldn’t make it this time



for various reasons, such as past winners Carl Wagner, Bruce Baker and Mike Nagaran, but hopefully they can make it next year...

1st Place, \$300, Darwin Laylo (4 ½)  
2nd Place, \$150, John Bryant (4)  
1st Under 2200, \$150, Giovanni Carreto (4)  
3rd Place, \$50, Ron Bruno (3 ½)  
1st Under 2000, \$150, Varun Krishnan (3 ½)  
2nd U2200, \$50, Ignacio Sainz (3 ½)  
2nd Under 2000, \$17 each, Barry Lazarus (3), Esteban Escobedo (3) and John Badger (3)  
Best Under 20 years old, \$100, Nathaniel Lagemann (2 ½)  
Best Under 16 years old, \$100, Jess Orłowski (2 ½)  
1st Under 1800, \$133 (tie), Ariel Gerardo (2)  
1st Under 1600, \$133 (tie), Eric Yang (2)  
Best Under 12 years old, \$133 (tie), Yash Pershad (2)  
2nd U1800, \$50, Darren Chow (1)  
2nd U1600, \$50, Aaron Chow (1)

– *Chuck Ensey*

## Westwood Charter Scholastic

**April 26**

The Bobby Fischer Memorial Scholastic tournament attracted 56 students to Westwood Charter School. David Coles won a blitz playoff against Eric Huang in the Championship (K-12) section. Other winners: Christopher Lopez, Nicholas Papazyan, Karinne Robbins, Mia Royce, Gwen Symonds, Stefano Watchi, Reid Whitney, William Roskin, Roya Touran, Amanda Whiting, Jack Kiefer and Asher Aronzon. Ivona Jezierska directed.

## Westwood Spring Open

**April 27**

Grandmaster Melikset Khachiyan, state champion IM Enrico Sevillano and IM Tim Taylor scored 4-1 to tie for first place in the Westwood Spring Open at the Los Angeles Chess Club last Sunday. Khachiyan defeated Sevillano in the last round of the 47-player tournament.

Samuel Sevian (age 7!) led the Reserve (under-1800) section. John Hillery directed

## San Diego Chess Club

In mid February, the Markowski Open was won by Ron Bruno with an impressive score of 6½ out of 7, a full point ahead of Second Place winner Todd Smith. 3 other Masters finished with 5 points: Bruce Baker, David Hart and Carl Wagner. Seven Experts also scored 5 points and tied for the U2200 prize: Mariano Lozano, Eric Montany, George Zeigler, Ignacio Sainz, Jim Humphrey, Carey Milton and Alejandro Garamendi. Brad Salz, rated 1999, was the only Class A player to score 5 points and thereby win the BU2000. These 13 players joined with 3 earlier qualifiers, Raoul Crisologo, Leonard Sussman and John Funderburg, to make up the 16 player Club Championship. Here are the other prize winners in the Markowski Open: 2nd U2000 – Thirunathan Sutharsan, Ed Baluran and Roberto Aiello, U1800 – Roxas Acosta, 2nd U1800 Damani Fair and Hector Gonzalez, U1600 – Rocio Murra and William Murray, 2nd U1600 Ryan Nichols, Julian Rodriguez and Robert Samuel, U1400- Keith Wetterer, Alan Zade, Monica Ness and Arnold Berlin.

The 7 round Club Championship, played from 2/20 to 4/02/08, was also won by the amazing Mr. Ronald Bruno, this time with a score of 6 out of 7. This was the first time that we have had a repeat winner of the championship crown (Ron also won in 2006) since Cyrus Lakdalawa gave up playing in 2004. Previous winners were Bob Richard and Rick Aeria, Co-Champions in 2004, Adam Corper in 2005, and John Funderburg in 2007.

John finished a very close Second Place this time with 5½ points. Third Place was split between Todd Smith, Ignacio Sainz and Alejandro Garamendi. The field was so strong that even accomplished Experts such as Carey Milton and Eric Mon-

tany finished with only 1 point and a½ point respectively. Eric dropped out after 4 losses in a row. Even the very strong senior Carl Wagner had a rough time and withdrew after 2 rounds after a terrible mistake against John Funderburg. Some people did manage to outperform: Class A player Phillip Roth filled in as a replacement for 3 rounds and scored 2 points! Brad Salz, now rated 2006 after the Markowski, was the lowest rated qualifier, but scored 3½ points, breaking even alongside NM David Hart, NM Bruce Baker and Expert George Zeigler. The games were of generally high quality and almost all of them were posted on our website after each round, so the entire club and more could follow all the exciting action. Rick Aeria provided excellent color commentary and IM Cyrus Lakdawala annotated the best games. You can still see it all on <http://groups.msn.com/sandiegochess>.

The Reserve Championship, for players rated U1800, was won by Shaun Sweitzer with an excellent score of 6 out of 7. He lost only to Second Place winner Fawsi Jose Murra, the father of a large family of chess players. Third Place was won by Fred Borges, one of our oldest members. Vincent Broman finished with 4 points and five other players broke even with 3½: Hector Gonzalez, Rocio Murra, Tom Kuhn, Ryan Nichols and Robert Draper.

Another event ran concurrently with the 32 player Club & Reserve Championships – The 33 player and newly named Fred Borges Open, formerly The Lasker Open. The club has decided to honor its own long term players rather than the old world champions, who get enough publicity as it is. Our next event will be the Robert Samuel Open, formerly the Spring Swiss. Bob Samuel is no spring chicken, but he is a battled scarred bantam rooster with many a scalp on his belt. But back to the Borges Open – the top section ended up being a Class A championship with 20 players and it was won by Dayne Freitag with 5½

points. Tying for 2nd-3rd /U1900 were Marty Lower, Lennart Mathe and Fausto Robles with 5 points. Ed Baluran and David Delgadillo tied for 4th-5th with 4½ points. In the Borges Reserve Section (U1800), 13 players vied for prizes and a trophy. Jerry Soelberg claimed the trophy on tie-breaks over Michael Ryan, both with 6 points. Anthony Harbone was 3rd with 5. BU1500 was won by Patrick Edwards, Michael Wang took U1400 and Andrew Sung was the U1300 winner. – *Chuck Ensey*

## Gambito Opens

The March Super Gambito had a rather anemic turnout of only 21 players, the lowest in recent memory, apparently there were some scholastic and other events that kept some players away. Cyrus Lakdawala won \$125 once again with 3½ points, yielding a draw to Ron Bruno. Bruce Baker was Second Place with 3 points and Raoul Crisologo was BU2400, also with 3 for \$75 each. Ron Bruno was 2nd U2400. Rick Aeria and Carey Milton tied for BU2200 while Ed Baluran, Thirunathan Sutharsan and Roberto Aiello tied for BU2000. Chuck Ensey tied with Jerry Soelberg for First Place in the Reserve Section and the precocious Michael Chen won BU1600 while Fred Cleveland was 2nd U1600.

The April Super Gambito had a robust turnout of 37 players, including 5 Masters and 7 Experts. The high turnout allowed for a prize fund of \$830, well above the guaranteed \$600 level. For once Cyrus Lakdawala did NOT win, in fact he lost in the first round to Ed Baluran and was so upset he withdrew. No doubt he will now embark on a long winning streak as he usually does after a loss gets his dander up. Watch out Gambito players! Claiming First Place this month were John Bryant and Ron Bruno, both with 3½ points. They drew in the last round and split the 1st place and U2400 prize for

\$140 each. Best Under 2200 was split between Ryan Richardson and Giovanni Carreto, both scoring 3 points for \$65 each. Ed Baluran also scored 3 and won U2000 for \$80. Dmitry Kishinevsky, Rick Aeria and Leonard Sussman all scored 2½ and split the 2nd U2400 and 2nd U2200 prizes for \$20 each. Chuck Ensey and Alan Tsoi scored 2 and split the 2nd U2000 prize for \$15 each. John Bryant won the Best Game Prize of \$15. In the Reserve section (U1800), Nestor Dagamat swept through the field with a 4-0 result. Anthony Harbone and Jason Arbeiter tied for Second Place with 3 points while Tom Kuhn and the very young Aaron Household tied for BU1600, also with 3 points.

The 2nd Gambito Open was played on the 14th of October in the year 2000. The first one was unrated and was won by Ron Gambito himself. Ron only played in the first 12 Gambito Opens before passing away prematurely. The tournament has been going strong ever since, and has been played on just about every single Saturday for over 7 years with just a few exceptions (other larger weekend events sometimes pre-empt it). Bruce Baker won the 2nd Gambito Open, followed by Tony Davis, who now resides in Arkansas. Tying for 3rd Place were Leonard Sussman, Ton Nelson, Dmitry Kishinevsky and Michael Nagaran. Tom is now in Georgia, but Dmitry and Lenny are still regular participants and Mike still comes by once or twice a year. About twice a year we have a Special Gambito Open with 5 rounds and extra prizes. This will be the case on July 5th when we will have a \$2,000 prize fund, based on 40 players. We start early at 10 AM on that day, so if you are looking to play or get some tips from some very strong players then give us a try! For more info, call Bruce Baker at 619-239-7166 or visit the SDCC website. – *Chuck Ensey*

**John Daniel Bryant (2333)**

– **Bruce Baker (2309)**

**Gambito #366, San Diego 2008**

**B22 SICILIAN DEFENSE, Alapin**

**Variation**

*Notes by IM Cyrus Lakdawala*

**1. e4 c5 2. c3 Nf6 3. e5 Nd5 4. Nf3 Nc6 5. Bc4**

I have never thought much of the Bc4 line in the c3 Sicilian but so far I have only seen wins from John Bryant in the line!

**5. ... Nb6 6. Bb3 c4 7. Bc2 d5 8. exd6 e5**

Here 8. ... Qxd6 9. 0-0 g6 is supposed to lead to equality for Black.

**9. 0-0 Qxd6!?**

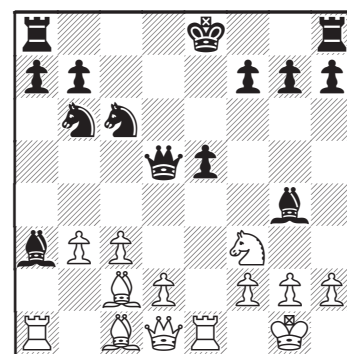
Bruce loves to live on the edge! (9. ... Bxd6 is the safer choice.)

**10. b3 cxb3**

Or 10. ... Bg4 11. Na3 (11. Ba3 Qd5 12. Bxf8 Rxf8 13. Re1 Bxf3 14. Qxf3 Qxf3 15. gxf3 0-0-0 16. Be4 f6³ 17. Bxh7 f5 18. h4 Rf6 19. h5 Rh8 20. Bg6 Ne7 is good for Black) 11. ... cxb3, leading to the game position]

**11. axb3 Bg4 12. Na3 Qd5 13. Re1 Bxa3?**

Better was 13. ... Bxf3 14. gxf3 0-0-0 15. b4 Kb8 16. Qe2, leading to a very tense position where White may have the superior chances, but still anybody's game.



**14. Be4!**

A very alert in-between move which prevents Black from doubling the f-pawns.

**14. ... Qe6 15. Bxa3**

The Black King is clearly in danger now. The Queenside is wide open, but there is no choice but to go there.

**15. ... 0-0-0**

Not 15. ... Nd5 16. h3 Bh5 17. Qc2! Bg6 18. Bxg6 hxg6 19. Nd4!, and Black will not survive.

#### 16. Bxc6

Even stronger was 16. Qc2! Nd7 17. d4 Bxf3 18. Bxf3 Nf6 19. Bxc6 Qxc6 20. dxe5 Nd5 21. Bd6.

#### 16. ... bxc6 17. Bc5 Kb8 18. Qe2 Bxf3 19. Qa6! Rd7!

Not 19. ... Qg4?? 20. Qxa7+ Kc8 21. Qa6+! Kd7 (21. ... Kc7 22. Qxb6+ Kd7 23. Qb7+ Ke6 24. Qe7+) 22. Qb7+ Ke6 23. Qe7+, and 19. ... Nc8 20. Bxa7+ Kc7 21. Qa5+ Kd7 22. gxf3+- is also hopeless for Black.

#### 20. Bxb6 axb6

If 20. ... Qg4 21. Bxa7+ Rxa7 22. Qxa7+ Kc8 23. Qa6+ Kc7 24. Qf1 wins.

#### 21. gxf3?!

John plays it safe. White can simply grab the Rook on h8 here with 21. Qa8+! Kc7 22. Qxh8 Qg4 23. Ra7+ Kd6 24. Qb8+!.

#### 21. ... Rc8 22. Qxb6+ Rb7 23. Qc5 f6 24. Ra6?!

Stronger was 24. Re4! Qd5 25. Qa3! Kc7 (25. ... Qxb3? 26. Qd6+! Rcc7 27. Rea4) 26. d4!.

#### 24. ... Qd5! 25. Qe3

25. Qa3!.

#### 25. ... Qxb3

Bruce has defended exceptionally well from an absolutely horrible position.

#### 26. Rea1 Qb5?!

Correct was 26. ... Qc2! 27. h3 (27. Ra7 Rb1+! 28. Rxb1+ (28. Kg2 Qg6+ 29. Kh3 Qf5+) 28. ... Qxb1+ 29. Kg2 Qg6+) 27. ... Kc7!, and suddenly Black has reasonable chances of holding.

#### 27. Kg2 g6 28. R1a5 Qb3

No better was 28. ... Qc4 29. d4.

#### 29. Qc5 Qe6 30. Rb6! Qd7 31. Raa6! Rcc7

Or 31. ... Rxb6 32. Rxb6+ Kc7 33. Qb4! Kd8 34. Rb7.

#### 32. Qa5 1-0

**Ron Bruno (2355) – IM Cyrus Lakdawala (2512)**

**Gambito 369, San Diego 2008**  
**B12 CARO-KANN DEFENSE,**

**Fantasy Variation**

*Notes by Cyrus Lakdawala*

**1. e4 c6 2. d4 d5 3. f3 dxe4 4.**

#### **fxe4 e5 5. Nf3 Bg4!?**

One of the newest suggestions against the Fantasy line of the Caro.

#### 6. c3

Instead, 6. Bc4 Nd7 7. 0-0 Ngf6 8. c3 Bd6!? 9. Qb3 0-0 10. Qxb7 is a pawn sac suggested by WIM Houska in her new book on the Caro Kann. ]

#### 6. ... Nd7 7. Be3!? Ngf6 8. Nbd2 Qc7 9. Be2!

Terrific intuition! Ron always seems to throw me for a loop in the opening. Normally the Bishop is developed to c4, but this move may be an improvement because now Black must look out for Nc4. Also, a future h3 and Nh4 is in the air.

#### 9. ... Bd6 10. 0-0 0-0 11. h3 Bh5 12. Nh4! Bxe2 13. Qxe2 Rfe8 14. Bg5

In this must-win final round game I already felt that my position had soured. White's attack looms large here.

#### 14. ... Re6!

This strong defensive move is the correct plan. This move makes White sacs on the Kingside much harder, and also prepares to double Rooks on the e-file, pressuring the e4 pawn.

#### 15. Nf5 Bf8 16. Qf3 Rae8 17. Rae1 Kh8!

Another good defensive move. Black's King will be a lot safer if he can get in ... Ng8 and ... f6.

#### 18. Qg3 Ng8

I also considered 18. ... g6 19. Nh6 Bxh6 20. Bxh6 Nh5 21. Qh2! Kg8 22. g4 Ng7, with a slight edge for White.

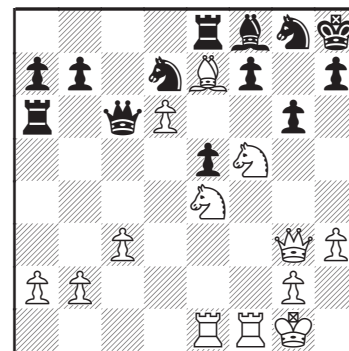
#### 19. d5!

I expected 19. Nf3 f6 20. Bc1 g6 21. Ne3 Bd6 22. d5 R6e7.

#### 19. ... cxd5 20. exd5 Ra6

I wasn't quite desperate enough to go into the line 20. ... Rg6 21. Nh4 Qc5+ 22. Kh1 Rxc5 23. Qxc5 Qxd5, with a small endgame advantage for White.

#### 21. d6 Qc6 22. Be7 g6 23. Ne4!?



#### 23. ... f6!

The White pieces are swarming the Black kingside, yet everything miraculously holds together! Rybka says I should call his bluff with 23. ... gxf5 24. Bxf8 (24. Ng5 Nh6 25. Rxe5) 24. ... Rxf8 25. Rxf5, but with the clocks running low I didn't want to allow lines like this.

#### 24. Bxf8

I dismissed the line 24. Nh4? Bxe7 25. Nxg6+ hxg6 26. Qxg6 Nf8! 27. Qh5+ Nh7 28. dxe7 Rxe7, winning for Black.

#### 24. ... Rxf8 25. Ne7?!

Maybe 25. Nh4 Qc4!, but Black is still better.

#### 25. ... Nxe7 26. dxe7 Re8 27. Rf2

The sacs still don't work. For instance: 27. Nxf6? Nxf6 28. Qxe5 Kg7 29. Rf2 Qd6.

#### 27. ... Rxe7 28. Rd2 Kg7

Perhaps 28. ... Rxa2!?

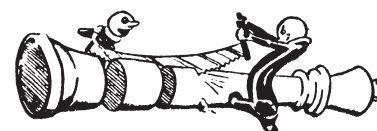
#### 29. h4 Nc5 30. Nd6 Qd7! 31. b4??

A time-pressure blunder, but 31. Red1 Rxa2 is also lost for White.

#### 31. ... Rxd6 32. Rxd6 Qxd6 33. bxc5 Qxc5+ 34. Kh1 Qd5 35. Qf2 b6 36. h5 e4 37. h6+ Kf7 38. Qe3 Qg5

The simplest.

**39. Qxg5 fxg5 40. g4 Kf6 41. Kg2 Ke5 42. Rf1 e3 43. Rf8 Ke4 44. Kf1 Kd3, and Black won in a few moves. 0-1**





... Continued from page 11

days. Closed Mondays, Tuesdays, and Thursdays. Wide variety of rated tournaments, Action chess, youth tournaments, scholastic chess camps, blitz, occasional lectures and simuls, large selection of chess books, computers, and equipment for sale, lending library of chess videos, excellent website. Dues: \$3/day or \$99/year. Call the club at (714) 899-3421 or Alfred Ong at (562) 598-5099. Web site: [www.chesspalace.com](http://www.chesspalace.com).

**GLENDALE.** The chess park at 227 N. Brand Blvd. is open day and night for casual play. Speed tournaments Friday evening, occasional weekend tournaments.

**HEMET.** The Hemet Chess Club meets 5:30 p.m. to 10:30 p.m. Fridays in the clubhouse of Royal Holiday MH Park, 4400 W. Florida Ave. Casual play, all levels welcome, refreshments, rated tournaments possible. Juniors only with responsible adult. Dues: \$20/year, first three visits free. Call Marcos Montes at (951) 252-5926 or leave message at 951-766-6084. Email: [hemetchessclub@yahoo.com](mailto:hemetchessclub@yahoo.com).

**HUNTINGTON BEACH.** The Hanley Chess Academy Chess Club meets 6:00 p.m. to 11:30 p.m. Thursdays at 7390 Center Ave. Weekly rated tournaments, Action chess, blitz tournaments, casual play. No dues. Bring your own equipment. Contact: Joe Hanley at (714) 925-3195 or [refchess@gmail.com](mailto:refchess@gmail.com) or Barry Lazarus at (714) 229-0792.

**INGLEWOOD.** The Inglewood Library Chess Club meets 1:00 p.m. to 5:00 p.m. Saturdays in the public library, 101 W. Manchester Blvd. Children's program with free instruction 3:00 p.m. to 5:00 p.m. Fridays. Call the library at (310) 412-5380.

**IRVINE.** A group meets at lunch time (11:45 a.m. to 1:00 p.m.) Fridays at Knowlwood Restaurant, 14952 Sand Canyon Ave. Speed chess, analysis. Bring equipment. Contact David

Zechiel at [david@zechiel.com](mailto:david@zechiel.com).

**JOSHUA TREE.** The Joshua Tree Chess Club meets 5:30 p.m. to 10 p.m. Fridays at Faith Lutheran Church, 6336 Hallee Rd. in Joshua Tree. Casual play, occasional tournaments, some instruction, junior chess program. Contact Mark Muller at (760) 367-2311 or at [muller29@adelphia.net](mailto:muller29@adelphia.net).

**LA PALMA.** The La Palma Chess Club meets 6:00 p.m. to 11:00 p.m. Fridays in Central Park, 7821 Walker St. Rated tournaments, Action chess, casual play. Entry fees: \$40 for three months of rated tournament play, \$5 less to La Palma residents. Call Mike Henebry at (562) 370-2146 or Leigh Hunt at (714) 635-0448. Web site: [www.lapalmachess.741.com](http://www.lapalmachess.741.com).

**LAGUNA BEACH.** People gather to play chess at the permanent chess table on the boardwalk.

**LAGUNA WOODS.** The Leisure World Chess Club meets 11:00 a.m. to 5:00 p.m. Mondays and 10:30 a.m. to 6:00 p.m. Thursdays in the Community Center building in Leisure World. Guests are welcome. Casual play, ladder competition, occasional simul. Call Alan Brown at (949) 206-1039.

**LAWNDALE.** The Alondra Park Chess Club meets 6:30 p.m. to 10:00 p.m. Tuesdays at 3850 Manhattan Beach Blvd. Rated six-round tournaments at 7:00 p.m., speed chess or extra rated games on seventh Tuesday, no smoking. Dues: \$5/year plus \$5/tournament, \$2.50/year for juniors. Call Steve Boak at (310) 607-9751. Web site: [www.geocities.com/alondra\\_park\\_cc](http://www.geocities.com/alondra_park_cc).

**LONG BEACH.** The chess room in Bixby Park, 130 Cherry Ave., is open for casual play from noon to 5:30 p.m. Mondays through Fridays and noon to 4:00 p.m. Saturdays. Free.

**LONG BEACH.** Players gather for casual play at Golden Burger, 2301 E. 4th St., after the chess room in Bixby Park closes. Call the restaurant at (562) 434-2625.

**LOS ANGELES.** The Santa Monica Bay Chess Club meets 7:00 p.m. to 11:00 p.m. Mondays in St. Andrew's Lutheran Church, 11555 National Blvd. Variety of rated tournaments, casual play, simuls, over 50 years in business. Dues: \$40/year, free to women and juniors. Call Pete Savino at (310) 827-2789. Website: [www.geocities.com/santamonibaychessclub](http://www.geocities.com/santamonibaychessclub).

**LOS ANGELES.** The Exposition Park Chess Club meets 1:00 p.m. to 4:30 p.m. Sundays in the Exposition Park branch of the public library, 3665 S. Vermont Ave. Casual play, lectures, simuls, instruction, free tournament on the first Sunday of every month. No dues. Call the library at (323) 732-0169 or send a message to the club secretary at [expoChess07@yahoo.com](mailto:expoChess07@yahoo.com). Web site: <http://chess.expoparkla.com>.

**LOS ANGELES.** A group meets at 6 p.m. Mondays in the Baldwin Hills branch of the public library, 2906 S. La Brea Ave. Casual play, instruction for beginners. All ages welcome, especially children and teenagers. Call the library at (323) 733-1196.

**LOS ANGELES.** A group of seniors meets Monday and Friday mornings at 8:00 a.m. in the Freda Mohr Community Building, 330 N. Fairfax Ave. Casual play, no smoking.

**LOS ANGELES.** The Los Angeles Chess Club (LACC) meets on the second floor of 11514 Santa Monica Blvd., above Javan restaurant. Variety of tournaments and instruction on Saturdays, Sundays, Tuesday evenings and Wednesday evenings. Dues: adults \$120/year, juniors/seniors \$100/year or \$5/visit for non-members, first visit free. Call Mick Bighamian at (310) 795-5710 or send a message to [Mick@LaChessClub.com](mailto:Mick@LaChessClub.com). Web site: [www.lachessclub.com](http://www.lachessclub.com).

**LOS ANGELES.** Tang's Donuts, 4341 W. Sunset Blvd., welcomes chessplayers for casual play and speed chess, especially late at night.

**MORRO BAY.** A group meets 11

a.m. to 5 p.m. Saturdays at the big chess board on Embarcadero at Morro Bay Blvd. Chess pieces may be checked out weekdays from the Parks and Recreation Dept. Call Eugene Arcamonte at (805) 528-4079 or Fred Brown at (805) 772-7074.

**MURIETTA.** A group meets in the early afternoon on the first Sunday of each month at Cloud 9 Coffee, 25395 Madison Ave., Suite 111. Casual play. Free. Call the restaurant at (951) 698-4386.

**NATIONAL CITY.** The National City Chess Club meets noon to 10:00 p.m. daily at 1341 E. 8th St. Scholastic instruction and casual play Tuesdays, Gambito tournaments every other Saturday. Free instruction for scholastic members ages 7 to 12. Dues: \$120/year, \$15/month, \$1.50/visit, free to masters. Call Jorge Balares at (619) 477-3118 or (619) 788-8395. Web site: [www.nationalcitychessclub.com](http://www.nationalcitychessclub.com).

**OCEANSIDE.** The Oceanside Chess Club meets 6:00 p.m. to 9:00 p.m. Wednesdays in the North River Road Neighborhood Center, 5306 N. River Rd. Casual play, occasional rated tournaments. No dues required. Call James Fritz at (760) 967-0717.

**ORANGE.** The Orange Senior Club meets from noon to 4:00 p.m. Tuesdays in the Orange Senior Citizens Community Center, 170 S. Olive St. in Orange. Casual play, all ages welcome. For information, call (714) 538-9633.

**PASADENA.** The Pasadena Chess Club meets 6:30 p.m. to 11:00 p.m. Fridays in Pasadena Senior Center, 85 E. Holly St. Rated tournaments, Quick chess, occasional exhibitions. Dues: \$15/year. Call Neil Hultgren at (818) 243-3809 or Randy Hough at (626) 282-7412. Web site: [www.tim-thompson.com/pasadena.html](http://www.tim-thompson.com/pasadena.html).

**PASO ROBLES.** The Paso Robles Chess Club meets 6:30 p.m. to 9:00 p.m. Wednesdays in the Senior Center, 270 Scott St. Casual play, tournaments. Dues: \$15/year. Call Dennis Steele at (805) 227-4444. Web

site: [www.chessmaniac.com/paso-club](http://www.chessmaniac.com/paso-club).

**POWAY.** The North County Chess Club has moved to San Marcos. Contact Mike Nagaran at (858) 285-5901 or at [mnagaran@fuhsd.net](mailto:mnagaran@fuhsd.net).

**REDLANDS.** The Joslyn Center Chess Club meets 11:00 a.m. to 5:00 p.m. Wednesdays in the Joslyn Senior Center, 21 Grant St. Casual play, non-rated tournaments. No dues. Call the Senior Center at (909) 798-7550.

**REDLANDS.** Another group meets 7:00 to 10:00 p.m. Tuesdays in the Community Center, 111 W. Lugonia Ave. Call (909) 798-7579.

**RIDGECREST.** The Ridgecrest Chess Club meets 5:00 p.m. to 8:00 p.m. Saturdays in the Kern County Library (west entrance), 131 E. Las Flores Ave. Casual play, occasional scholastic and club tournaments. No dues. Contact Dwight Morgan at (760) 377-0034 or [dmorgan@iwvisp.com](mailto:dmorgan@iwvisp.com).

**RIVERSIDE.** A group meets for casual play and blitz at 8:30 p.m. Thursday evenings in Back 2 the Grind Cafe, 3575 University Ave. "Quick Thursdays" G/15 quads on the first Thursday of every month, register at 8 p.m. Bring equipment. Call the cafe at (951) 784-0800 or e-mail Tyrone Liddell at [TD@TheChessUnion.com](mailto:TD@TheChessUnion.com). Web site: [www.TheChessUnion.com](http://www.TheChessUnion.com).

**RUNNING SPRINGS.** The Mountain Chess League meets at 6:30 p.m. Tuesdays in The Fireside, 32031 Holiday Lane. Casual play, must be over age 21. Annual team tournament starts in March. No dues. Call Don La Suer at (909) 867-4994 or send a message to [donculo@earthlink.net](mailto:donculo@earthlink.net).

**SAN DIEGO.** The San Diego Chess Club meets daily in the Balboa Club, 2225 6th Ave. (at Ivy) in Balboa Park. Club opens for casual play at 2:00 p.m. weekdays, 10:00 a.m. Saturdays, and noon Sundays. Rated tournaments at 7:00 p.m. Wednesdays and 10 a.m. Saturdays, Action

chess, speed chess, instruction by master Bruce Baker at 7:00 p.m. Thursdays, Jedi Knights childrens club from 6:00 p.m. to 9:00 p.m. Fridays. Dues: \$48/year. Call the club at (619) 239-7166. Web site: <http://groups.msn.com/SanDiegoChess/>.

**SAN DIMAS.** Coffee Bazaar, 661 W. Arrow Highway, welcomes chess-players. Bring your chess set. Call (909) 394-1964.

**SAN LUIS OBISPO.** The San Luis Obispo Chess Club meets 6:30 p.m. to 10:00 p.m. Tuesdays in the Church of the Nazarene, 3396 Johnson Ave. Casual play, lectures, occasional tournaments. Dues: \$5/year. Call Barbara McCaleb at (805) 544-0717 or [bmccaleb@calpoly.edu](mailto:bmccaleb@calpoly.edu).

**SAN MARCOS.** The North County Chess Club meets at 7:00 p.m. Fridays in the Woodland Parkway Senior Apt. Complex at 975 Woodland Parkway. Continuous rated tournaments, casual play. Dues: \$25/year, \$10/year for juniors. Call Mike Nagaran at (858) 245-5901, or e-mail [mnagaran@fuhsd.net](mailto:mnagaran@fuhsd.net).

**SANTA MONICA.** Chess tables are available from sunup to sundown daily at the Santa Monica International Chess Park, on the promenade

## Solutions to Chess Quiz (see page 24)

**Kramnik – Anand,** Melody Amber, 2008: Mate is forced after  
1. ... Qf3 (the tempting 1. ... Rh1+ 2. Bxh1 Qh2+ 3. Kf1 Qxh1+ 4. Ke2 Qe4+ leads only to a draw) 2. cxb7+ Kf5 0-1

**Bolbochan – Pachman,** Olympiad, Moscow 1956: It's mate after  
1. Qxf7+ Kxf7 2. Bxe6# 1-0

**Stephenson – Ingraham,** Simul game, Los Angeles 1918: White's Queen is attacked, but he has no need of a Queen to mate after  
1. Qxg5 fxg5 2. Rf7+ Kg8 2. Nh6# 1-0



just south of the Santa Monica pier. Casual chess, blitz, chess bulletin board, large demonstration board, occasional summer tournaments. No dues.

**SIMI VALLEY.** The YMCA Chess Club of Simi Valley meets 6:00 p.m. to 10:00 p.m. Mondays at the YMCA, 3200 Cochran St. Casual play, instruction, non-rated tournaments. Dues: \$5/month, free to YMCA members. Call John Williams at (805) 529-1816.

**VENTURA.** The Ventura County Chess Club meets on the first Tuesday, the second Monday, and the later Tuesdays each month in the Church of the Foothills, 6279 Foothill Rd. Rated tournaments, casual play. Dues: \$35.00/year, \$17.50/year for juniors and military, \$2.00/night for non-members. Call Jimmy Sweet at (805) 659-0356 or Chuck Smith at (805) 654-8472. Web site: [www.vcchess.com](http://www.vcchess.com)

**VICTORVILLE.** The Victor Valley Chess Club meets noon to 4:00 p.m. Saturdays in the Victor Villa Clubhouse, 13393 Mariposa Rd. Non-rated tournaments (rated tournaments possible in future), casual play, instruction. No dues. Write to [DonCotten@aol.com](mailto:DonCotten@aol.com).

**WEST COVINA.** The West Covina Chess Club meets 12:30 p.m. to 4:30 p.m. Tuesdays and Thursdays in the Senior Center, 2501 E. Cortez St. All ages welcome. Casual play, rated and non-rated tournaments on Tuesdays. Bring chess equipment. No speed chess! Call Richard Williams at (626) 966-6311.

**WEST HILLS.** The West Valley Chess Club meets 6:30 p.m. to 10:30 p.m. Thursdays in the West Valley Jewish Community Center, 22622 Vanowen St. Open to all, continuous rated tournaments, blitz, casual play. One of the largest local clubs. Contact Jerry Yee at (818) 915-5572 or at [jyee6@socal.rr.com](mailto:jyee6@socal.rr.com). Web site: [www.geocities.com/freechessclub](http://www.geocities.com/freechessclub)

## Solutions to Tactics by Hanks

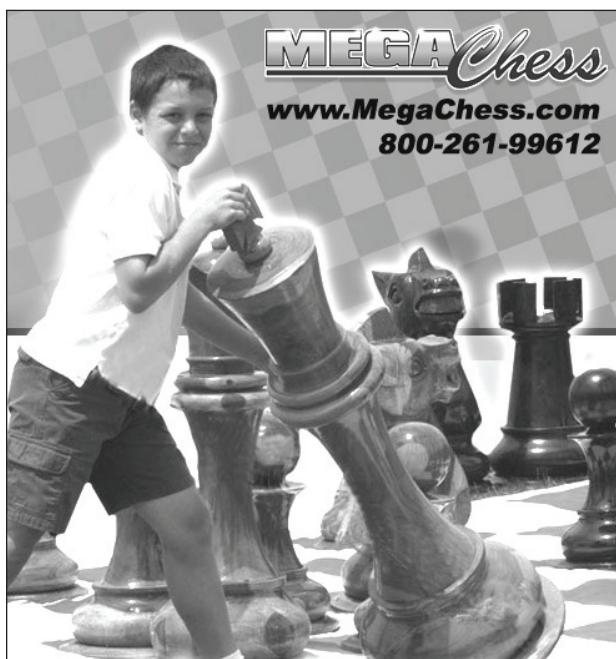
(see page 10)

**Problem no. 1: b) Flawed.** The main line is 1. dxe5 dxe5 2. Qc3 Bb4! 3. Qxe5? Qxe5 4. Nxe5 Bc3! which wins a piece for Black. Watch out for those *gotcha's*!

**Problem no. 2: a) 1. Bxb4 is unclear.** This is from the game Adamson -- Philip, National Open, Las Vegas, 2007. One possible variation is 1. ... **Bxb4!? 2. c5 Nd5!** (not 2. ... Bxc5, as 3. Ba5 is much better for White) 3. **Rxd5** (forced) **exd5 4. cxb6 Rxe2 5. Bxb4 Re4 6. Rc1+ Rc4 7. Rxc4+!** (perhaps 7. ... Rc3 improves) **dxc4** which is unclear, although the N+B vs R certainly has the better prospects. Black, however, declined the pawn and later lost by some very instructive technique by White.

**Problem no. 3: c) White is winning.** From the game H. Cohen -- S. Zeirk, National Open, Las Vegas, 2007. Sorry, but Black is totally busted here. One key line that wins for White is 1. **fxg6 hxg6 2. Nf5!** (this clears the way for the Queen to attack via the h-file) **g5** (What else can Black do?) 3. **Nh4! Kh7 4. Qf3** and it's curtains for Black. In an incredible battle White missed this line and later missed a forcing mate in 7. Still later he missed a chance to draw then eventually lost in the endgame. The real question is, does he even know what he missed? Always review your games. You never know when you may repeat opening lines and get similar positions.

**Problem no. 4: b) Black is winning.** This is from the game Antonsen -- Bobboom, Oostende 1991. The main line goes: 1. ... **Bxf3 2. Rf1** (if 2. gxf3 Qh3 and mate follows quickly) 2. ... **Bxg2+ 3. Kxg2** (if 3. Kg1 Bd4+ 4. Kxg2 Qg4+ 5. Kh1 Nf2+ 6. Rxf2 Bxf2 and White is in a mating net) 3. ... **Ne1+ 4. Kf2** (if instead 4. Rxe1 then Qg4+ 5. Kf2 Bd4+ 6. Re3 Qf4+ 7. Kg2 Qxe3 and Black is winning) 4. ... **Qh3 5. Nc4 Qg2+ 6. Ke3 Qxf1 7. Ne5 Qg1+ 8. Ke2 Qxh2+ 9. Kxe1 Bxe5 10. Qb6 Qd2+ 11. Kf1 Bd4** and Black wins. When you work problems like try to recognize how all the pieces work together to force the winning positions. This kind of instruction will prove beneficial for your own games.





## Books Available

IM Anthony Saidy of Los Angeles wants to give away chess books in Dutch, German and Czech to anyone who can read them. E-mail him at [saidychess@sbcglobal.net](mailto:saidychess@sbcglobal.net) to arrange pickup after May 4, or else arrange to meet him at National Open in Las Vegas in June.

## Late news: Topalov-Kamsky in Ukraine

According to Chessbase.com, Russian chess journalist Yuri Vasiliev has confirmed that the semi-final Candidates Match between Veselin Topalov and Gata Kamsky will take place in Lvov, Ukraine, for a prize fund of US \$750,000. On the web site "ChessPro," Vasiliev tells of a lengthy conversation he had with the initiator, Gata Kamsky's manager (and diamond trader) Alexander Chernenko.

In April, Chessbase reported that FIDE had extended the deadline for bids for the Kamsky-Topalov Candidates Match. The Bulgarian Chess Federation protested vigorously, but then the reason for FIDE's decision became clear: a US \$750,000 bid to stage the match in Lvov, western Ukraine, had been announced by Kamsky's manager Alexander Chernenko. There were a lot of doubts if this offer was real.

Now Chernenko has stated that the financial guarantees have now been received by FIDE, at their Swiss bank account: "The sum of US \$935,000 has appeared on the bank's computer screen in Lausanne," Vasiliev quotes Chernenko as saying. Here are some of the available details on the match:

**Date:** November 26th to December 11th

**Venue:** Potockis' Palace Lviv, 15 Copernicus st. Lvov, Ukraine

**Prize fund:** \$750,000 (+ \$150,000 for FIDE and \$35,000 for FIDE expenses)

-- [chessbase.com](http://chessbase.com)

## 2007-2008 State Championship

Seeded into the Championship are 2007 champion Enrico Sevillano, up to three players selected on the basis of rating, and four from the 2008 Candidates Tournament.

July 29-July 1	Pacific Southwest Open	Andranik Matikozyan Gregg Small Alaa-Addin Moussa
July 7-15	State Championship	Jack Peters Tim Taylor Julian Landaw Ron Hermansen John Daniel Bryant John Funderburg Reynaldo del Pilar
July 19-22	Pacific Coast Open	Melikset Khachiyan Joel Banawa Joaquin Banawa Harutyun Akopyan
August 11-12	San Diego County Open	Adam Corper Ulric Aeria Leonard Sussman
September 1-3	Southern California Open	Ganbold Odondoo Christian Tanaka
September 15	San Luis Obispo Cty. Champ.	Vadim Kudryavtsev
October 19-21	Western Pacific Open	Alexandre Kretchetov Tianye He
November 22-25	American Open	Eugene Yanayt Takashi Iwamoto Ryan Richardson
December 8-9	Joseph Iletto Memorial	Eduardo Ortiz Takashi Kurosaki Carlos Garcia Danyul Lawrence
January 18-21	Western Class Championships	Matthew Beelby Michael Casella Joshua Gutman
January 27	Westwood Winter Open	Show Kitagami
Feb. 29-March 2	SCCF High School Championship	Derek Tan Jared Tan
March 28-30	6th Ann. Western Pacific Open	Michael Yee Barry Lazarus
April 19-20	SCCF Senior Open	Romeo Ignacio

### Upcoming

April 27	Westwood Spring Open	West LA
May 3-4	Los Angeles County Open	Monterey Park
May 24-26	Memorial Day Classic	LAX

Each event qualifies two players (highest scoring Southern California residents not previously qualified) except that 1) In the event of a tie, all tied players will advance; 2) A score of 60% is required to qualify; 3) The SCCF Amateur, SCCF High School and any one-day event will each have *one* qualifying spot; and 4) All one-day tournaments shall require a 75% score and only *one* player shall qualify on tiebreak.

## Upcoming Events

### May 10

**CHESS UNION INLAND SWISS.** 3-SS, G/75. Colton Community Center, 670 Colton Ave. Colton, CA 92324. \$\$Top 2 Gtd., U1600 prize b/15. **EF:** \$30. **Reg:** 9:00-10:10 a.m. **Rds:** 10:15-1:00-4:00. **Ent:** at door or on-line at [www.TheChessUnion.com](http://www.TheChessUnion.com). No checks or credit card entries at door. No time delay allowed. **Info:** Call (951) 990-7990. NC.

### May 17-18

28th Annual San Joaquin Championship. 5-SS, Rds 1-3 G/90; Rds 4-5 G/120, St Agnes Medical Center, West Wing, Education Room B, 1303 E Herndon Ave, Fresno CA 93710. **EF:** \$35 if rec'd by May 15; \$40 at the door. Entry fee returned after Rd 5 to GM, IM, SM, & FM. \$\$GTD: \$400-200-100-100. Trophies 1st overall and Classes A B C D, Under 1200 & Unrated. Accelerated pairings rd 1-2. 1/2 bye point any round. Must be requested before Rd 2. **Ent:** Fresno Chess Club c/o Vanessa French, 4085 N Peach Ave Apt 166, Fresno, CA 93727-8415. **Info:** Vanessa French 559-292-1468 & frenchchessman@sbcglobal.net until 5/15; Allan Fifield 559-967-3379 & sequoiachess@sbcglobal.net after 05/15. **Dir:** Email for site directions. Other: Non-rated beginners section. Excellent Full Service Cafeteria On Site. NS NC W. WCL JGP. **GP: 20**

### May 24-26

**2008 LINA GRUMETTE MEMORIAL DAY CLASSIC.** 6-SS, 40/2, SD/1 (2-day schedule rds 1-3 G/60, then merges). LAX Hilton, 5711 W Century Blvd, Los Angeles, CA 90045. \$10,000 b/200, 60% of each prize guaranteed. **In four sections: Open:** \$T+1800-750-400-300-200, U2400 400, U2200 700-300-200. **Premier**

(under 2000): \$\$750-300-200-100. **Amateur** (Under 1800): \$\$750-300-200-100. **Reserve** (Under 1600/unrated): \$\$750-300-200-100. U1400 400-200, U1200 150, Unr 150. (Unrated may win Unrated prize only.) Best game prize \$25, all sections eligible. **All:** half-point byes available, limit 2, rds 5-6 must be requested with entry & cannot be revoked. SCCF membership req. (\$18, jr. \$10), OSA. No checks or credit cards at door. **Reg:** 3-day 9-10 a.m. 5-24, 2-day 8:30-9:30 a.m. 5-25. **Rds:** 3-day: 10:30-5 Sat-Sun, 10-4:30 Mon. 2-day: 10-12:15-2:30 Sun., then merges. **EF:** \$83 if received by 5-23, \$95 door, U1400/unrated \$67 by 5-23, \$80 door. On-line entry: [www.westernchess.com](http://www.westernchess.com). **Ent:** SCCF, c/o John Hillery, 835 N. Wilton Pl. #1, Los Angeles CA 90038. **HR:** \$109 (310) 410-4000, mention chess. Parking \$10/day. **Inf:** admin@westernchess.com. NS, W, F. JGP. **GP: 40. State Championship Qualifier.**

### May 25

**MDC SCHOLASTICS.** 5-SS, SD/45. LAX Hilton, 5711 W Century Blvd, Los Angeles, CA 90045. Open to gr. 12-below. **In two sections: Open:** Trophies to top 5, top 3 U1200, top 2 Unrated. **Grade 6/below U1000:** Trophies to top 5, top 3 U700, top 2 Unrated. **Reg:** 8:30-9:15. **Rds:** 9:30-11:1:00-2:30-4. **EF:** \$16 if received by 5-23, \$20 door. **Inf:** John Hillery, admin@westernchess.com. On-line ent: [www.westernchess.com](http://www.westernchess.com). **Ent:** SCCF, c/o John Hillery, 835 N. Wilton Pl. #1, Los Angeles CA 90038.

### May 26

**MEMORIAL DAY ACTION SWISS.** 5-SS, G/30. LAX Hilton, 5711 W Century Blvd, Los Angeles, CA 90045. \$500 b/40, else proportional: \$150-70-40,

U2100/Unr \$80, U1800 \$80, Under 1500 \$80. **EF:** \$20 if received by 5-23, \$25 at door. **Reg:** 9-10 a.m. **Rds:** 10:15-11:30-12:45-2:30-3:45. **Ent:** SCCF, c/o John Hillery, 835 N. Wilton Pl. #1, Los Angeles CA 90038, online at [www.westernchess.com](http://www.westernchess.com).

### May 26

**MDC HEXES.** 3-SS, G/90. LAX Hilton, 5711 W Century Blvd, Los Angeles, CA 90045. Six-player sections by rating. **EF:** \$20 if received by 5-23, \$25 door. \$40-20-10 each section. **Reg:** 9:30-10:30 a.m. **Rds:** 10:45-2-5. **Ent:** SCCF, c/o John Hillery, 835 N. Wilton Pl. #1, Los Angeles CA 90038, online at [www.westernchess.com](http://www.westernchess.com).

### May 25

**DIVERSITY SPRING SCHOLASTICS.** 27 W. Huntington Dr., Arcadia, CA 91007. **Rated:** 4-SS G/30. In three sections: Open, Reserve (U1000), Booster (U400/unrated). One 1/2-pt by allowed for rounds 1-3. **Non-rated:** 5-SS, in three sections: K-3, K-6, K-12. 1st place ties in all sections will be broken via 5-min speed game, all others will use the standard tie-break formula. Trophies: **Rated,** Open: top 3, top U1200, top U1000, Reserve: top 3, top U800, top U600, Booster: top 3. **Non-Rated,** top 3 in each of K-3, K-6, K-12. **EF:** **Rated** \$20, **Non-rated** \$15 if received by 5/24/08. \$5 more onsite. **Reg:** 9-10 a.m. **Rds:** **Rated,** 10-11:15-1:15-2:30, **Non-Rated,** 10-10:45-12:30-1:15-2, awards at 3:30. **Info:** Roel Sanchez; 626-818-0671 (cell), [www.diversityeducationalcenter.com](http://www.diversityeducationalcenter.com).

### June 1

**LACC JUNE SCHOLASTIC.** 5 SS, G/30, K-12 11514 Santa Monica Blvd - Second Floor - 4 blocks West of 405 Fwy - LA, CA 90025. Free Parking on the

streets; or in the building basement (\$3). EF: \$20 (\$2 off for SCCF members). Reg: 1:30-2:00 p.m. Rds: 2:00, 3:00, 4:00, 5:00, 6:00. Prizes: Trophies, Medals, Special Prizes! Everybody receives a prize! Info: Mick Bighamian: Cell (310) 795-5710; ick@LaChessClub.com. NS. NC. W.

### June 28-29

**MY KINGDOM FOR A HORSE.** 6-SS, G/60. Los Angeles Chess Club, 11514 Santa Monica Blvd, LA, CA 90025, 2nd floor (4 blocks W. of 405). Sponsored by Dr. Harold Valery (Cardinal Medical Group - Long Beach). \$1500 guaranteed. **In two sections: Open:** \$400-200-50, U2200 125, U2000 125. **Reserve (U1800):** \$200-100, U1600 \$125, Under 1400/unrated \$100, U1200 \$75. EF: \$55 if received by 6/25; \$60 at the door (\$45 LACC members if received by 6/26; \$50 at the door). \$6 off SCCF members. **1-Day option 1:** Play in 1 day, receive three 1/2 point byes, pay full EF; or **1-Day option 2:** Play in 1 day, receive no 1/2 point byes, pay 1/2 EF (\$3 off to SCCF members). **Reg:** 11:00 - 11:45 a.m. **Rds:** 12:00, 2:00, 4:00 each day. 2 Free Parking lots on the SW corner of Santa Monica & Purdue, or in the building basement (\$3). **Ent:** LACC, P.O. Box 251774, Los Angeles, CA 90025. **Inf:** (310) 795-5710 or Mick@LaChessClub.com. **GP: 10. State Championship Qualifier.**

### July 4-6

**48TH ANNUAL PACIFIC SOUTHWEST OPEN.** 6-SS, 40/2, SD/1 (2-day schedule rds 1-3 G/60, then merges). LAX Hilton, 5711 W Century Blvd, Los Angeles, CA 90045. \$8,000 b/240, half of all prize guaranteed. **In 2 sections: Open,** \$1400-700-400-300-200, U2200 \$600-300-150, U2000 \$600-300-150. **Amateur,** open to U1800/Unr, \$600-300-150, U1600 500-250-150, U1400 400-250, U1200 150, Unr. 150. Unr. may win Unrated prize only. **All, EF** \$69 if rec'd by 7-3, \$79 at site. SCCF memb. req'd of So. Californians (\$18, jrs. U18 \$10, includes *Rank & File* magazine). **Reg:** 3-day 9-10

a.m. 7-4, 2-day 8:30-9:30 a.m. 7-5. **Rds:** 3-day: 10:30-5 Fri-Sat, 10:430 Sun. 2-day: 10-12:15-2:30 Sat., then merges. **Ent:** SCCF, c/o John Hillery, 835 N. Wilton Pl. #1, Los Angeles CA 90038, on line at www.westernchess.com. **HR:** \$109 (310) 410-4000, mention chess. Parking \$10/day. **Inf:** admin@westernchess.com. NS, W, F. WCL JGP. **GP: 30. State Championship Qualifier.**

### July 5

**PSW SCHOLASTICS.** 5-SS, SD/45. LAX Hilton, 5711 W Century Blvd, Los Angeles, CA 90045. Open to gr. 12-below. **In two sections: Open:** Trophies to top 5, top 3 U1200, top 2 Unrated. **Grade 6/below U1000:** Trophies to top 5, top 3 U700, top 2 Unrated. **Reg:** 8:30-9:15. **Rds:** 9:30-11-1:00-2:30-4. **EF:** \$16 if received by 7-3, \$20 door. **Inf:** John Hillery, admin@westernchess.com. On-line ent: www.westernchess.com. **Ent:** SCCF, c/o John Hillery, 835 N. Wilton Pl. #1, Los Angeles CA 90038.

### July 6

**PSW HEXES.** 3-SS, G/90. LAX Hilton, 5711 W Century Blvd, Los Angeles, CA 90045. Six-player sections by rating. **EF:** \$20 if received by 7-3, \$25 door. \$40-20-10 each section. **Reg:** 9:30-10:15 a.m. **Rds:** 10:30-1:30-4:30. **Ent:** SCCF, c/o John Hillery, 835 N. Wilton Pl. #1, Los Angeles CA 90038, online at www.westernchess.com.

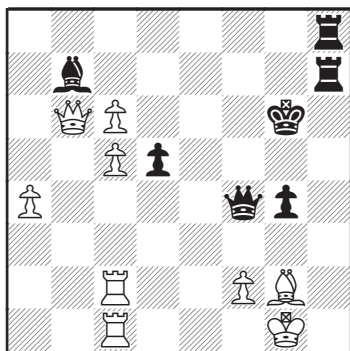
### July 17-20

**12TH ANNUAL PACIFIC COAST OPEN.** 6-SS, 40/2, SD/1 (2-day option, rds 1-3 G/50). Renaissance Agoura Hills Hotel, 30100 Agoura Road, Agoura Hills CA. Free parking. Prizes: \$20,000 based on 250 paid entries (re-entries count as half entries, U1000 Section as one-fourth, unrated not counted), minimum \$16,000 (80% of each prize) guaranteed. **In 7 sections. Open:** \$2000-1000-500-300, U2300/Unr \$1200-600. **FIDE. Under 2100:** \$1500-700-500-300. **Under 1900:** \$1500-700-500-300. **Under 1700:** \$1500-700-500-300.

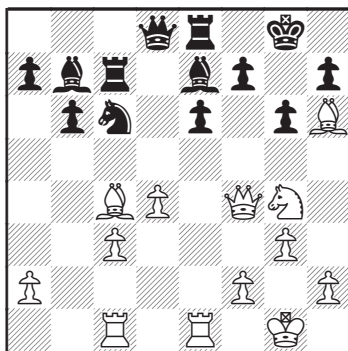
**Under 1500:** \$1400-700-400-200. **Under 1300:** \$1200-600-300-200. **Under 1000:** \$200-100-60-40, trophies to top 7. Unrated may play in any section, with maximum prize U2100 \$500, U1900 \$400, U1700 \$300, U1500 \$200, U1300 \$120, U1000 \$60; balance goes to next player(s) in line. **Top 6 sections EF:** 4-day \$104, 3-day \$103, 2-day \$102 mailed by 7/9, all \$105 online at www.chesstour.com by 7/14, \$110 phoned by 7/14 (406-896-2038, entry only, no questions), \$120 (no checks, credit cards OK) at tmt. All: SCCF membership (\$18, jrs \$10) required for rated Southern CA residents. **Under 1000 Section EF:** 4-day \$24, 3-day \$23, 2-day \$22 mailed by 7/9, all \$25 online at www.chesstour.com by 7/14, \$30 phoned by 7/14 (406-896-2038, entry only, no questions), \$40 (no checks, credit cards OK) at site. **All sections: FREE ENTRY TO UNRATED.** Re-entry \$50; not available in Open Section. Special 1 year USCF dues with *Chess Life* if paid with entry online at www.chesstour.com, unrated \$20, rated \$30. If mailed, phoned or paid at site, unrated \$30, rated \$40. Cost of reduced dues paid by CCA. GMs free; \$80 deducted from prize. **4-day schedule: Reg** Thu to 6:30 p.m., **Rds** Thu 7 p.m., Fri 7 p.m., Sat 11-6, Sun 10-4:30. **3-day schedule: Reg.** Fri to 11 a.m., **Rds** Fri 12-7, Sat 11-6, Sun 10-4:30. **2-day schedule: Reg** Sat to 9 a.m., **Rds** Sat 10-12:45-3:15-6, Sun 10-4:30. **All schedules:** Bye all, limit 2, must commit before rd 2 or have under 70% score. **HR:** \$84-84-84-84, 818-707-1220, reserve by 7/3 or rate may increase. **Car rental:** Avis, 800-331-1600, use AWD #D657633. **Ent:** Continental Chess, PO Box 249, Salisbury Mills NY 12577. \$10 charge for refunds. Questions: www.chesstour.com, 845-496-9648. Advance entries posted at chesstour.com. WCL JGP. **GP: 100. State Championship Qualifier.**



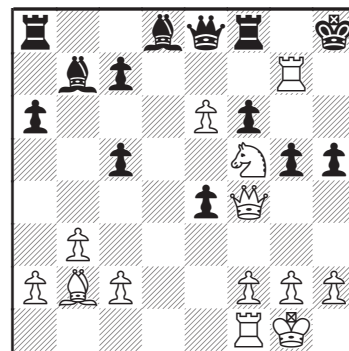




KRAMNIK – ANAND  
MEOLODY AMBER, 2008  
*BLACK TO MOVE*



BOLBOCHAN – PACHMAN  
OLYMPIAD, MOSCOW 1956  
*WHITE TO MOVE*



STEPHENSON – INGRAHAM  
LOS ANGELES, 1918  
*WHITE TO MOVE*

**Solutions on page 19**

---

SCCF  
PO Box 205  
MONTEREY PARK CA 91754