

EXHAUST FAN INFORMATION – JOB#5469753

FAN UNIT NO	TAG	QTY	FAN UNIT MODEL #	MANUFACTURER	CFM	ESP	RPM	MOTOR ENCL	HP	BHP	PHASE	VOLT	FLA	DISCHARGE VELOCITY	WEIGHT (LBS)	SDNES
1	KEF-1	1	DU85HFA	CAPTIVEAIRE	2255	0.900	1487	TEAD-ECM	1.000	0.5940	1	115	11.6	714 FPM	92	16.5
2	KEF-2	1	DU85HFA	CAPTIVEAIRE	1538	0.900	1244	TEAD-ECM	1.000	0.3480	1	115	11.6	487 FPM	92	10.9
3	EF-3 (BATH DOWN)	1	DR10HFA	CAPTIVEAIRE	150	0.350	1240	TEAD-ECM	0.166	0.0380	1	115	1.9		48	3.8

CONDENSER DETAILS

FAN UNIT NO	TAG	FAN UNIT MODEL #	CONDENSER NO	TONNAGE	VOLTAGE	PHASE	FREQUENCY	MCA	RLA	MAX FUSE SIZE	MIN WIRE SIZE	SEER
4	KSF-1	A1-D.250-15D-MPU	1	3	208-230	3 PHASE	60 HZ	14.5 AMPS	11.9 AMPS	20 AMPS	14 AWG	14

MUA FAN INFORMATION – JOB#5469753

FAN UNIT NO	TAG	QTY	FAN UNIT MODEL #	BLOWER	HOUSING	MIN CFM	DESIGN CFM	ESP	RPM	MOTOR ENCL	HP	BHP	PHASE	VOLT	FLA	MCA	MDCP	WEIGHT (LBS)	SDNES
4	KSF-1	1	A1-D.250-15D-MPU	15MF-1-MDD	A1-D.250	1100	1800	0.550	2064	ODP,PREMIUM	1.500	1.3660	3	208	4.4	5.5A	15A	1066	21

COILS – JOB#5469753

FAN UNIT NO	TAG	COIL TYPE	DESIGN CFM	COOLING										HEATING									
				ENTERING DB TEMP	ENTERING WB TEMP	LEAVING DB TEMP	LEAVING WB TEMP	ENTERING FLUID TEMP	LEAVING FLUID TEMP	FLUID FLOW RATE	PERCENT GLYCOL	TOTAL CAPACITY	SENSIBLE CAPACITY	LATENT CAPACITY	ENTERING DB TEMP	LEAVING DB TEMP	ENTERING FLUID TEMP	LEAVING FLUID TEMP	FLUID FLOW RATE	PERCENT GLYCOL	STEAM PRESSURE	TOTAL CAPACITY	SENSIBLE CAPACITY
4	KSF-1	DX	1800	93.0°F	76.0°F	80.9°F	70.8°F	---	---	---	---	36.0 MBH	22.8 MBH	13.2 MBH	---	---	---	---	---	---	---	---	---

GAS FIRED MAKE-UP AIR UNIT(S)

FAN UNIT NO	TAG	INPUT BTUs	OUTPUT BTUs	TEMP RISE	REQUIRED INPUT GAS PRESSURE	GAS TYPE	BURNER EFFICIENCY(%)
4	KSF-1	104199	95863	50°F	7 IN. W.C. – 14 IN. W.C.	NATURAL	92

FAN OPTIONS

FAN UNIT NO	TAG	QTY	DESCRIPTION
1	KEF-1	1	GREASE BOX
		1	ECM WIRING PACKAGE – MANUAL DR 0-10VDC REFERENCE SPEED CONTROL (TELCO MOTOR), CCW ROTATION
		1	2 YEAR PARTS WARRANTY
2	KEF-2	1	GREASE BOX
		1	ECM WIRING PACKAGE – MANUAL DR 0-10VDC REFERENCE SPEED CONTROL (TELCO MOTOR), CCW ROTATION
		1	2 YEAR PARTS WARRANTY
3	EF-3 (BATH DOWN)	1	ECM WIRING PACKAGE – MANUAL DR 0-10VDC REFERENCE SPEED CONTROL (TELCO MOTOR), CCW ROTATION
		1	I 12-BDD DAMPER
		1	2 YEAR PARTS WARRANTY
4	KSF-1	1	INLET PRESSURE GAUGE, 0-35"
		1	MANIFOLD PRESSURE GAUGE, -5 TO 15" WC
		1	LOW FIRE START
		1	MOTORIZED BACKDRAFT DAMPER FOR A1-D HOUSING – MEETS AMCA CLASS 1A RATING
		1	3 TON SINGLE CIRCUIT MODULAR PACKAGED COOLING OPTION FOR SIZE 1 DF/EH MUA (1,100 TO 1,800 CFM), 208V/230V, 3 PHASE. COOLING THERMOSTAT DR PROGRAMMABLE STAT REQUIRED FOR PROPER OPERATION
		1	DOWNTURN PLENUM FOR SIZE 1 DX COIL MODULE
		1	COOLING THERMOSTAT AND RELAY (NOT REQUIRED FOR EVAP)
		1	SEPARATE 120V WIRING PACKAGE (REQUIRED AND USED ONLY FOR DCV DR PREWIRE WITH VFD) – THREE PHASE ONLY
		1	2 YEAR PARTS WARRANTY

FAN ACCESSORIES

FAN UNIT NO	TAG	EXHAUST			SUPPLY			
		GREASE CUP	GRAVITY DAMPER	WALL MOUNT	SIDE DISCHARGE	GRAVITY DAMPER	MOTORIZED DAMPER	WALL MOUNT
1	KEF-1	YES						
2	KEF-2	YES						
3	EF-3 (BATH DOWN)		YES					
4	KSF-1						YES	

CURB ASSEMBLIES

NO	DN FAN	TAG	WEIGHT	ITEM	SIZE
1	# 1	KEF-1	41 LBS	CURB	23.000"W X 23.000"L X 24.000"H ALONG LENGTH, RIGHT VENTED HINGED.
2	# 2	KEF-2	41 LBS	CURB	23.000"W X 23.000"L X 24.000"H ALONG LENGTH, RIGHT VENTED HINGED.
3	# 3	EF-3 (BATH DOWN)	22 LBS	CURB	17.500"W X 17.500"L X 18.000"H ALONG LENGTH, RIGHT.
4	# 4		83 LBS	RAIL	6.000"W X 21.000"L X 15.000"H RIGHT.
4	# 4	KSF-1	83 LBS	CURB	21.000"W X 71.000"L X 15.000"H ALONG WIDTH, RIGHT INSULATED.

CAPTIVE-AIRE HOODS ARE BUILT IN COMPLIANCE WITH:

CAPTIVE-AIRE HOODS ARE BUILT IN COMPLIANCE WITH



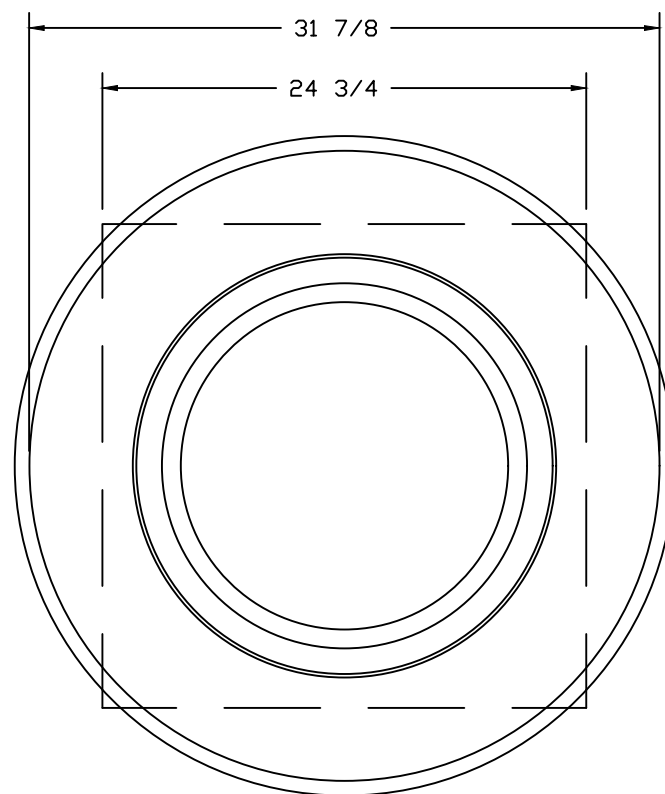
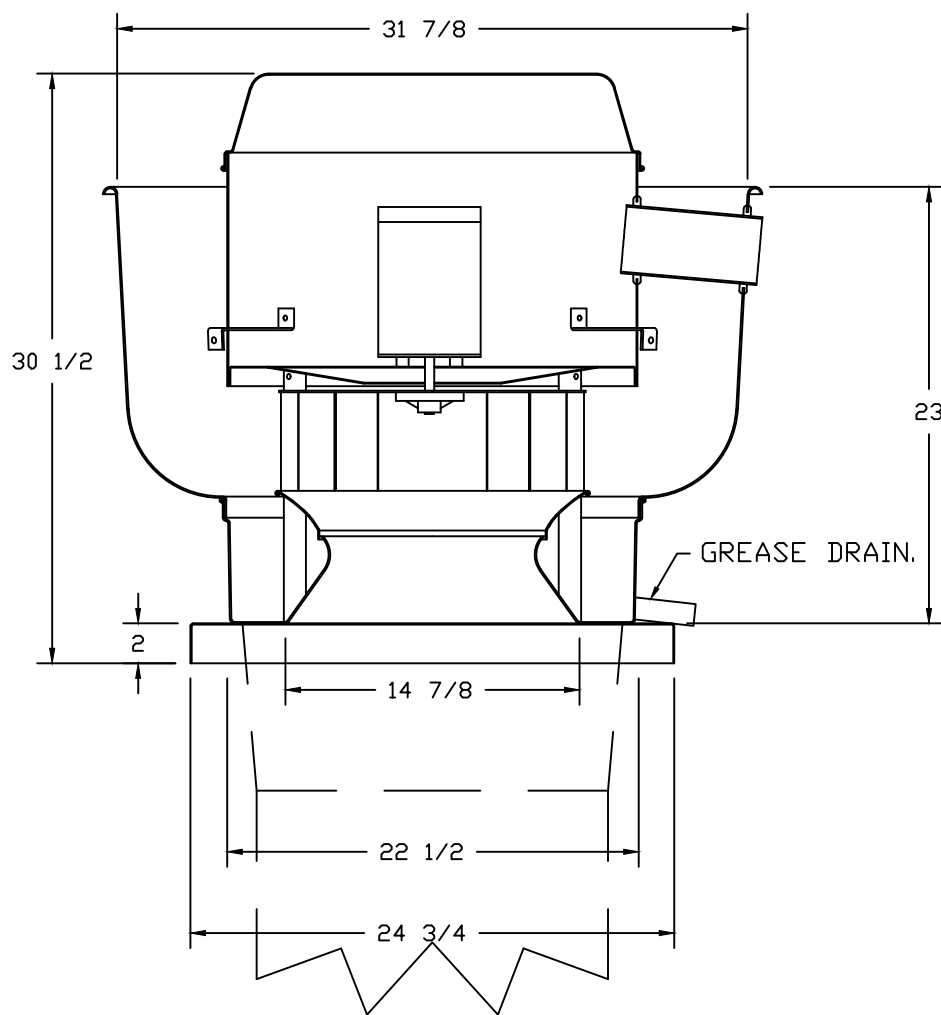
NSF #96
UL 710 & ULC710 STANDARDS
E.T.L. LISTED 3054804-001



FOR QUESTIONS
CONTACT: JOE WYLIE
NORTH CAROLINA REGIONAL OFFICE

PHONE: (919) 825-3566
EMAIL: REG36@CAPTIVEAIRE.COM FAX: (919) 227-5917

FANS #1 (KEF-1), #2 (KEF-2) – DU85HFA EXHAUST FAN



TOP VIEW

FEATURES:

- DIRECT DRIVE CONSTRUCTION (NO BELTS/PULLEYS).
- ROOF MOUNTED FANS.
- RESTAURANT MODEL.
- UL705 AND UL762 AND ULC-S645
- VARIABLE SPEED CONTROL.
- INTERNAL WIRING.
- THERMAL OVERLOAD PROTECTION (SINGLE PHASE).
- HIGH HEAT OPERATION 300°F (149°C).
- GREASE CLASSIFICATION TESTING.
- NEMA 3R SAFETY DISCONNECT SWITCH.

NORMAL TEMPERATURE TEST

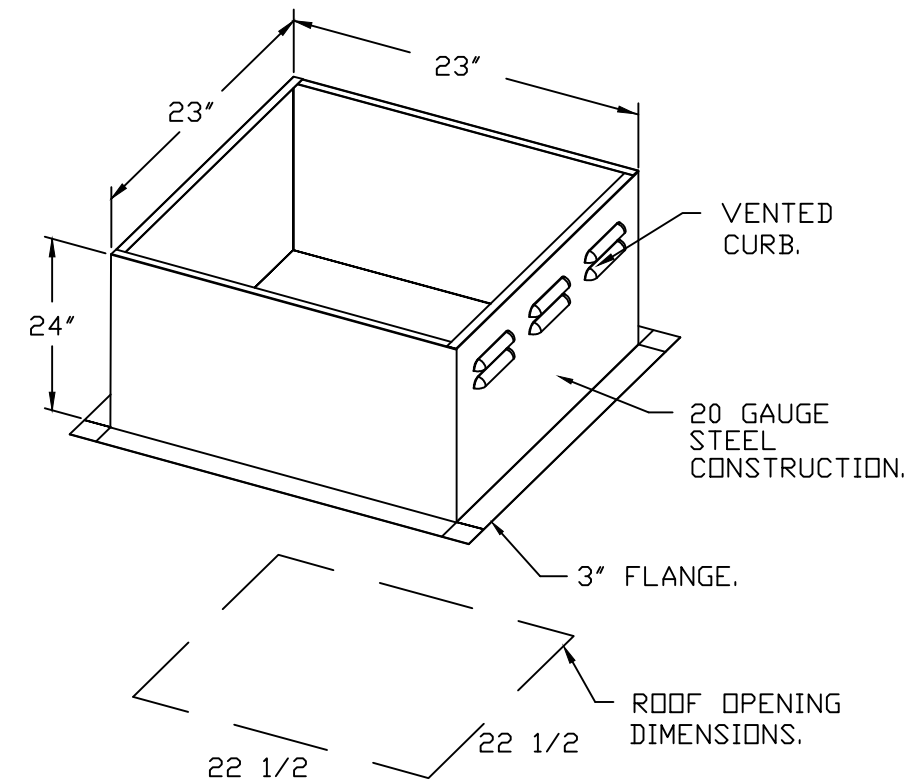
EXHAUST FAN MUST OPERATE CONTINUOUSLY WHILE EXHAUSTING AIR AT 300°F (149°C) UNTIL ALL FAN PARTS HAVE REACHED THERMAL EQUILIBRIUM, AND WITHOUT ANY DETERIORATING EFFECTS TO THE FAN WHICH WOULD CAUSE UNSAFE OPERATION.

ABNORMAL FLARE-UP TEST

EXHAUST FAN MUST OPERATE CONTINUOUSLY WHILE EXHAUSTING BURNING GREASE VAPORS AT 600°F (316°C) FOR A PERIOD OF 15 MINUTES WITHOUT THE FAN BECOMING DAMAGED TO ANY EXTENT THAT COULD CAUSE AN UNSAFE CONDITION.

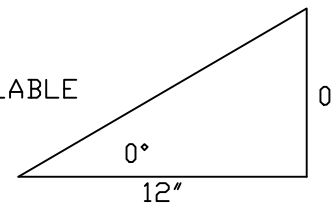
OPTIONS

GREASE BOX.
ECM WIRING PACKAGE – MANUAL DR 0-10VDC REFERENCE SPEED CONTROL (TELCO MOTOR), CCW ROTATION.
2 YEAR PARTS WARRANTY.



PITCHED CURBS ARE AVAILABLE FOR PITCHED ROOFS.

SPECIFY PITCH:
EXAMPLE: 7/12 PITCH = 30° SLOPE.



THIS DRAWING IS PROVIDED FOR REFERENCE ONLY. HOOD CONTRACTOR SHALL SELECT AND CERTIFY ALL EXHAUST/M.U. AIR FANS. ALL SYSTEMS SHALL MEET ALL APPLICABLE REQUIREMENTS OF STATE AND LOCAL CODES AND OTHER REQUIREMENTS AS SHOWN IN DESIGN DRAWINGS.

REVISIONS

DESCRIPTION	DATE:
Δ	
Δ	
Δ	
Δ	

Eastern North Carolina

4641 Paragon Park Rd., Raleigh, NC 27616 PHONE: (919) 825-3566 FAX: (919) 227-5917 EMAIL: reg36@captiveaire.com

HWY 55-PROTO 3.0-

DATE: 5/31/2022

DWG.#: 5469753

DRAWN BY: reg36

SCALE: 3/4" = 1'-0"

MASTER DRAWING

SHEET NO. 4

LIMIT Project No. 21318

THIS DRAWING IS THE PROPERTY OF THE ARCHITECT AND MAY NOT BE REPRODUCED OR USED WITHOUT THE WRITTEN PERMISSION.

SHOP DRAWING FOR REFERENCE ONLY

PROJECT: HIGHWAY 55 3.0 PROTOTYPE
1424 CURTIS BRIDGE ROAD
WILKESBORO, NC 28697
DRAWING: HOOD DETAILS

Revisions

THRU ADDENDUM	"A"
01/20/2022	
ΔEQUIP. UPDATE – 06.24.2022	

PROJECT DATE 01/07/2022

Drawn By

Checked By

Sheet No. M505