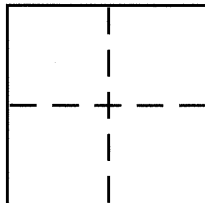


CORNER RECORD

BK 72 PG 79
Document Number CR 7566

City of BERKELEY County of ALAMEDA, California
Brief Legal Description LOT 14, BLOCK 30, "NORTH Cragmont"
(23MB4)



CORNER TYPE

Government Corner ☐ Control ☐
Meander ☐ Property ☒
Rancho ☐ Other ☐
Date of Survey 21 JULY, 2015

COORDINATES (Optional)

N. _____
E. _____
Zone _____ NAD27 ☐ NAD83 ☐
NAD83 Epoch _____
Elev. _____
Vert. Datum: NGVD29 ☐ NAVD88 ☐
Meas. Units: Metric ☐ Imperial ☐

Corner - Left as found ☐ Found and tagged ☐ Established ☒ Reestablished ☐ Rebuilt ☐

Identification and type of corner found: Evidence used to identify or procedure used to establish or reestablish the corner:

FOUND CITY PIN MONUMENT

A description of the physical condition of the monument as found and as set or reset:

SET 3/8" REBAR & PLASTIC CAP LS 5252

SURVEYOR'S STATEMENT

This Corner Record was prepared by me or under my direction in conformance with
the Land Surveyor's Act on 5 AUGUST 2015

Signed Jeffrey D. Black P.L.S. or R.C.E. No. 5252



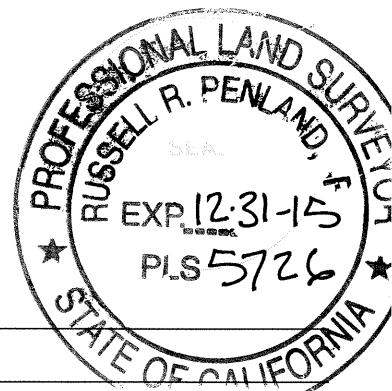
COUNTY SURVEYOR'S STATEMENT

This Corner Record was received 8-20-15
and examined and filed 11-2-15

Signed Russell R. Penland P.L.S. or R.C.E. No. 5726

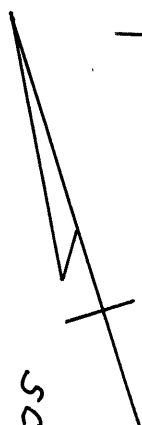
Title COUNTY SURVEYOR

County Surveyor's Comment _____

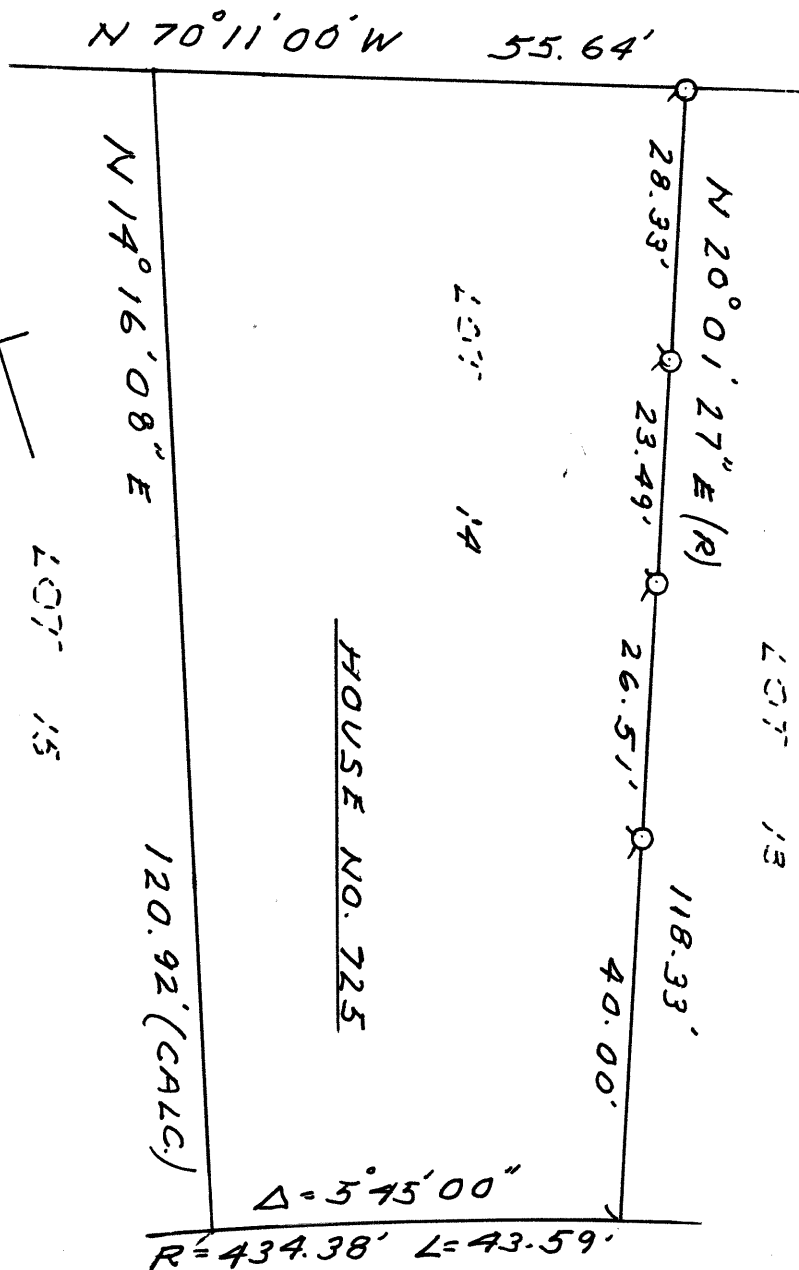


BLOCK 30, "NORTH CRAIGMONT" (23 M84)

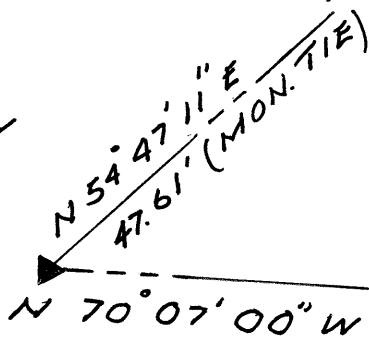
▲ FOUND CITY PIN MONUMENT
○ SET REBAR & CAP L5 5252



SCALE 1" = 20'



GRIZZLY



PEAK BLVD. (70')

