

| FINISH SCHEDULE | | | | | |
|------------------------|--|--|---|---|----------|
| ROOM NAME | FLOOR | BASE | WALL | CEILING | 01-11-19 |
| 100 DINING ROOM | T200 24" X 24" TILE | T109 6" X 36" TILE | P101, P104 T109 W102 WALL COVERING | C1 2' X 2' ARMSTRONG, SEP1A #PN81311 C3 GYP BOARD W/ PAINT P103 | |
| 101 SERVING AREA | S1 S2 PLAIN ABRASIVE IN HIGH TRAFFIC AREAS | S1 6" H CONT. (KITCHEN EQUIPMENT ON 6" NSF APPROVED LEGS) | T109 TILE | C3 GYP BOARD W/ SMOOTH WASHABLE PAINT | |
| 102 DRIVE-THRU STATION | S1 S2 PLAIN ABRASIVE IN HIGH TRAFFIC AREAS | S1 6" H CONT. (KITCHEN EQUIPMENT ON 6" NSF APPROVED LEGS) | WP1 FRP PANEL | C2 2' X 4' SUSPENDED GRID WASHABLE VINYL COATED GYP BOARD PANELS | |
| 103 KITCHEN | S1 S2 PLAIN ABRASIVE IN HIGH TRAFFIC AREAS | S1 6" H CONT. (KITCHEN EQUIPMENT ON 6" NSF APPROVED LEGS) | WP3 S.S. BEHIND COOK LINE WP1 FRP PANEL | C2 2' X 4' SUSPENDED GRID WASHABLE VINYL COATED GYP BOARD PANELS | |
| 104 KITCHEN PREP. | S1 S2 PLAIN ABRASIVE IN HIGH TRAFFIC AREAS | S1 6" H CONT. (KITCHEN EQUIPMENT ON 6" NSF APPROVED LEGS) | WP1 FRP PANEL | C2 2' X 4' SUSPENDED GRID WASHABLE VINYL COATED GYP BOARD PANELS | |
| 105 WALK-IN COOLER | S1 S2 PLAIN ABRASIVE IN HIGH TRAFFIC AREAS | S.S. / ALUMINUM WITH 3/4" RADIUS | EXT S.S. | ALUMINUM GALVANIZED STAINLESS STEEL | |
| 105A WALK-IN FREEZER | S1 S2 GALVANIZED STAINLESS STEEL SILIKAL UNDER WIF SUBFLOOR | S.S. / ALUMINUM WITH 3/4" RADIUS | EXT S.S. INT ALUMINUM GALVANIZED S.S. | ALUMINUM GALVANIZED STAINLESS STEEL | |
| 106 MEN'S ROOM | T200 24" X 24" TILE | SCHLUTER | T108 TILE | C3 GYB BOARD W/ P101 SMOOTH WASHABLE PAINT | |
| 107 WOMEN'S ROOM | T200 24" X 24" TILE | SCHLUTER | T108 TILE | C3 GYB BOARD W/ P101 SMOOTH WASHABLE PAINT | |
| 108 VESTIBULE | T200 24" X 24" TILE | T109 6" X 36" TILE | P104 PAINT GYB BOARD T109 TILE | C3 GYB BOARD W/ P101 SMOOTH WASHABLE PAINT | |
| 109 STORAGE ROOM | T200 24" X 24" TILE | T109 6" X 36" TILE | WP1 FRP PANEL | C3 GYB BOARD W/ P101 SMOOTH WASHABLE PAINT | |
| 110 EXTERIOR STORAGE | SEALED CONCRETE, SMOOTH FINISH | - | WP1 FRP PANEL | C3 GYB BOARD W/ P101 SMOOTH WASHABLE PAINT | |
| 111 ENTRY VESTIBULE | T200 24" X 24" TILE M100 4' X 6' MAT | T109 6" X 36" TILE | P104 T109 PAINT TILE | C3 GYB BOARD W/ P101 SMOOTH WASHABLE PAINT | |

| DOOR & HARDWARE SCHEDULE | | | | | | | | | |
|---|-----------------------|-------------------|---------|-------------------------------|--------|--------|-------|------|--------------------------------------|
| INSTALLED AND FURNISHED BY: G.C. UNLESS NOTED OTHERWISE | | | | | | | | | |
| NO. | DOOR MATERIAL | SIZE | FRAME | FACE/EDGE | THK. | CORE | LITE | RATE | REMARKS |
| 01 | ALUMINUM STOREFRONT | 3'-0" X 7'-0" | ALUM. | DARK BRONZE ANODIZED ALUM. | 1 1/2" | HOLLOW | GLASS | - | PROVIDE PULL ON EXTERIOR SIDE |
| 02 | ALUMINUM STOREFRONT | 3'-6" X 7'-0" | ALUM. | DARK BRONZE ANODIZED ALUM. | 1 1/2" | HOLLOW | GLASS | - | PROVIDE PULL ON EXTERIOR SIDE |
| 03 | S.C. WOOD | 3'-0" X 7'-0" | H. MTL. | PLASTIC LAMINATE PRE-FINISHED | 1 1/2" | SOLID | - | - | KICKPLATE ON EACH SIDE OF DOOR |
| 04 | S.C. WOOD | (2) 2'-0" X 7'-0" | H. MTL. | PLASTIC LAMINATE PRE-FINISHED | 1 1/2" | SOLID | - | - | KICKPLATE ON VESTIBULE SIDE OF DOORS |
| 05 | HOLLOW METAL | 3'-6" X 7'-0" | H. MTL. | PAINTED | 1 1/2" | INSUL. | - | - | KICKPLATE ON INT. SIDE OF DOOR |
| 06 | HOLLOW METAL | (2) 3'-0" X 7'-0" | H. MTL. | PAINTED | 1 1/2" | INSUL. | - | - | WITH LOUVERED VENT & BUG SCREEN |
| 07 | HOLLOW METAL | 3'-0" X 7'-0" | H. MTL. | PAINTED | 1 1/2" | INSUL. | - | - | WITH LOUVERED VENT & BUG SCREEN |
| 08 | ALUM. STORE VESTIBULE | 3'-0" X 7'-0" | ALUM. | DARK BRONZE ANODIZED ALUM. | 1 1/2" | HOLLOW | GLASS | - | |

| WALL SCHEDULE | | | | | | | | | |
|---|--|--|--|--|--|--|--|--|--|
| INSTALLED AND FURNISHED BY: G.C. UNLESS NOTED OTHERWISE | | | | | | | | | |
| NO. | DESCRIPTION | | | | | | | | |
| 01 | 3-5/8" 20GA. METAL STUD WALL W/ 1/2" TYPE "X" GYP. BOARD BOTH SIDES (SEE ARCHITECTURAL DETAILS & ELEVATIONS) | | | | | | | | |
| 02 | 3-5/8" 20GA. METAL STUD WALL W/ 1/2" TYPE "X" GYP. BOARD ON ONE SIDE (SEE ARCHITECTURAL DETAILS & ELEVATIONS) | | | | | | | | |
| 03 | (2) 3-5/8" 20GA. METAL STUD WALLS W/ 1/2" TYPE "X" GYP. BOARD BOTH SIDES (SEE ARCHITECTURAL DETAILS & ELEVATIONS) | | | | | | | | |
| 04 | 3-5/8" 20GA. METAL STUD LOW WALL W/ 1/2" TYPE "X" GYP. BD BOTH SIDES. PROVIDE 3 1/2" KNEE-WALL BRACE/POST @ CORNERS AND @ 48" O.C. | | | | | | | | |
| 05 | 6" 20GA. METAL STUD WALL W/ 1/2" TYPE "X" GYP. BOARD BOTH SIDES (SEE ARCHITECTURAL DETAILS & ELEVATIONS) | | | | | | | | |
| 06 | 6" 20GA. METAL STUD WALL W/ 1/2" TYPE "X" GYP. BOARD ONE SIDE (SEE ARCHITECTURAL DETAILS & ELEVATIONS) | | | | | | | | |
| 07 | 6" 20GA. METAL STUD LOW WALL W/ 1/2" TYPE "X" GYP. BOARD BOTH SIDES. PROVIDE 3 1/2" KNEE-WALL BRACE/POST @ CORNERS AND @ 48" O.C. | | | | | | | | |
| 08 | 2 1/2" 20GA. METAL STUD FURRING W/ 1/2" TYPE "X" GYP. BOARD ON ONE SIDE. REFER DETAILS FOR FURRING DISTANCE | | | | | | | | |

| WALL PANEL SCHEDULE | | | | |
|---|-----------------------|------------------------|---------|------------------------|
| INSTALLED AND FURNISHED BY: G.C. UNLESS NOTED OTHERWISE | | | | |
| NO. | MANUFACTURER | DESCRIPTION | MFG # | COLOR FINISH |
| WP1 | CRANE COMPOSITES INC. | F.R.P. THICKNESS: .075 | LB03.14 | #636 (GRAY), SM/SM |
| WP2 | - | S.S. PANEL (22 GA) | - | BRUSHED FINISH |
| WP3 | - | S.S. PANEL (22 GA) | - | DIAMOND PATTERN FINISH |
| WP4 | NOT USED | | | |
| WP5 | NOT USED | | | |
| W101 | NOT USED | | | |
| W102 | WOLF GORDON | RED BAMBOO | - | - |
| W103 | WOLF GORDON | CLOUD WALLCOVERING | - | - |

| SPECIAL SURFACE SCHEDULE | | | | | |
|---|--------------|-------------------|-------|----------------|----------|
| INSTALLED AND FURNISHED BY: G.C. UNLESS NOTED OTHERWISE | | | | | |
| NO. | MANUFACTURER | PRODUCT | MFG # | STAIN / COLOR | FINISH |
| QZ-3 | NOT USED | | | | |
| QZ-4 | NOT USED | | | | |
| QZ-7 | NOT USED | | | | |
| QZ-9 | CORIAN | ARTIFICIAL QUARTZ | - | BROADWAY BLACK | POLISHED |

| INTERIOR PAINT SCHEDULE | | | | |
|---|------------------|---------|--------------|--|
| INSTALLED AND FURNISHED BY: G.C. UNLESS NOTED OTHERWISE | | | | |
| NO. | MANUFACTURER | MFG # | COLOR | FINISH |
| PA05 | SHERWIN-WILLIAMS | SW 7065 | ARGOS | PROMAR 200, ZERO VOC, LATEX SEMI-GLOSS |
| PA08 | NOT USED | | | |
| PT01 | SHERWIN-WILLIAMS | SW 6252 | ICE CUBE | PROMAR 200, ZERO VOC, LATEX EGG-SHELL |
| PT02 | NOT USED | | | |
| PT03 | NOT USED | | | |
| PT04 | SHERWIN-WILLIAMS | SW 2850 | CHELSEA GRAY | PROMAR 200, ZERO VOC, LATEX EGG-SHELL |
| PT05 | NOT USED | | | |
| PT06 | SHERWIN-WILLIAMS | SW 7020 | BLACK FOX | DTM ACRYLIC GLOSS, LOW VOC |
| PA06 | SHERWIN-WILLIAMS | SW 7675 | SEALSKIN | PROMAR 200, ZERO VOC, LATEX EGG-SHELL |

WALL LEGEND

NEW EXTERIOR WALL

NEW EXTERIOR WALL
FRAMED WITH
STRUCTURAL STEEL STUDS

NEW INTERIOR WALL (FULL HT.)

NEW INTERIOR WALL (LOW WALL
- REF. ELEV. & DETAILS)

WALK-IN BOX PANEL

NOTE: THE FOLLOWING STAINLESS STEEL PROVIDED BY PX-INSTALLED BY G.C.:
1. PANEL DIVIDERS AT WP3
2. INSIDE CORNER AT WP3 TO WP2
3. FLASHING AT TOP OF BASE WP3
4. WP2 PIECE AT LENGTH OF WALL

NOTE: THE FOLLOWING STAINLESS STEEL PROVIDED BY G.C.-INSTALLED BY G.C.:
5. INSTALL 18 GA STAINLESS STEEL CORNER GUARD & WALL CAP INSIDE KITCHEN

18 GA. STAINLESS STEEL CORNER GUARD - FULL HT.

18 GA. STAINLESS STEEL CORNER GUARD - 4'-0" HIGH

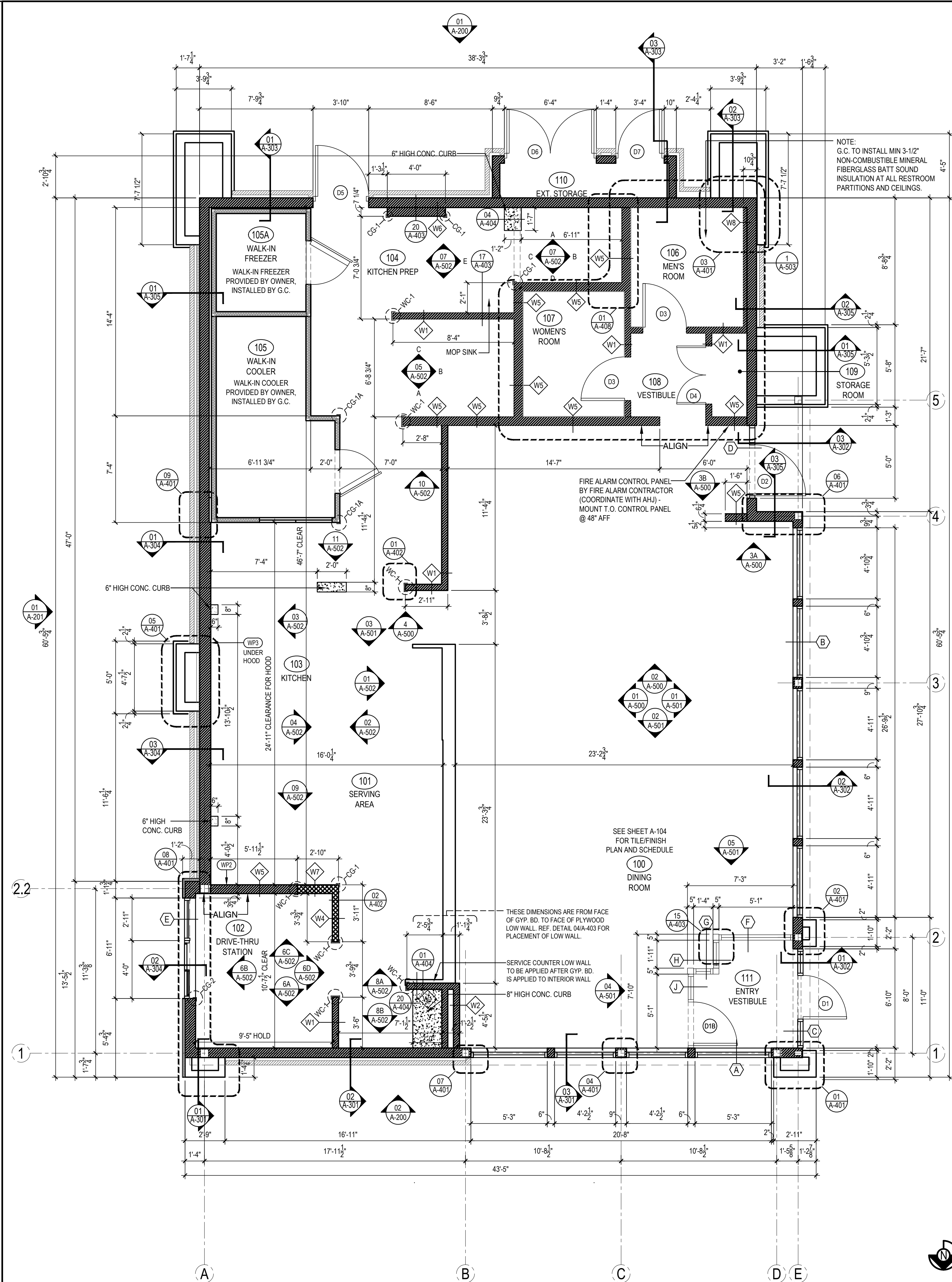
18 GA. STAINLESS STEEL CORNER GUARD/FRAME - ALL AROUND PERIMETER OF OPENING - FRAME TO BE WELDED WITH MITERED CORNERS TO FORM SINGLE UNIT.

18 GA. STAINLESS STEEL WALL CAP

ALL OTHER STAINLESS STEEL BY G.C.

NOTE!!!!!!!!!!!!!!:

***ALL INTERIOR DIMENSIONS ARE TO FACE OF GYPSUM BOARD**



FLOOR PLAN 1
Scale= 1/4" = 1'-0"

A-103



PANDA EXPRESS, INC.
1683 Walnut Grove Ave.
Rosemead, California
91770
Telephone: 626.799.9898
Facsimile: 626.372.8288

All ideas, designs, arrangement and plans indicated or represented by this drawing are the property of Panda Express Inc. and were created for use on this specific project. None of these ideas, designs, arrangements or plans may be used by or disclosed to any person, firm, or corporation without the written permission of Panda Express Inc.

REVISIONS:

| NO. | DESCRIPTION | DATE |
|-----|--------------|----------|
| 1 | STATE PERMIT | 06.07.21 |
| 2 | | |
| 3 | | |
| 4 | | |
| 5 | | |
| 6 | | |
| 7 | | |
| 8 | | |
| 9 | | |
| 10 | | |

ISSUE DATE:

DRAWN BY: CSW

PANDA PROJECT #: D8060

ARCH PROJECT #: JCDT20-0240

ANY LYNN COUNTY REGISTERED
No. AR12000032
STATE OF INDIANA
ARCHITECT
Augustynski
6/7/21

NORR
ARCHITECTS PLANNERS PLUMBERS

PANDA EXPRESS
TRUE WARM & WELCOME
390 W Spring Mill Pointe Dr.
Westfield, IN 46074

A-103
FLOOR PLAN
TRUE WARM & WELCOME 2300 R5