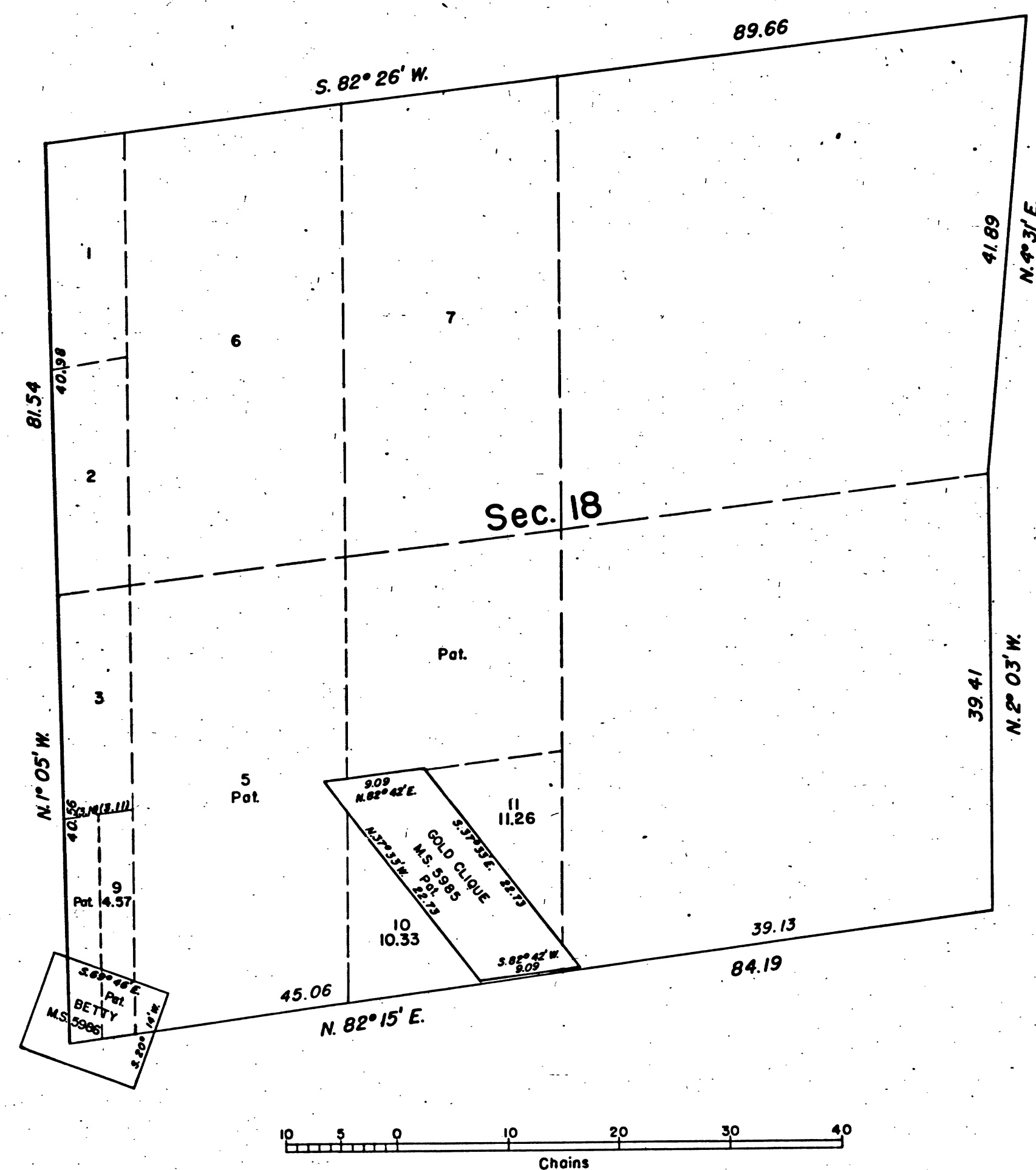


TOWNSHIP 5 NORTH, RANGE 13 EAST, OF THE MOUNT DIABLO MERIDIAN, CALIFORNIA.  
SUPPLEMENTAL PLAT OF SECTION 18



This supplemental plat, showing amended lottings in Section 18, T. 5 N., R. 13 E., Mount Diablo Meridian, California, is based upon the plat approved February 26, 1874, March 18, 1921, and Mineral Survey Plats approved September 30, 1930 and February 14, 1931.

UNITED STATES DEPARTMENT OF THE INTERIOR  
BUREAU OF LAND MANAGEMENT  
Washington, D.C. April 17, 1962

This plat, showing amended lottings, is based upon the official records, and having been correctly prepared in accordance with the regulations, is hereby accepted.

For the Director

*E. E. Livingston*  
Chief, Division of Engineering

