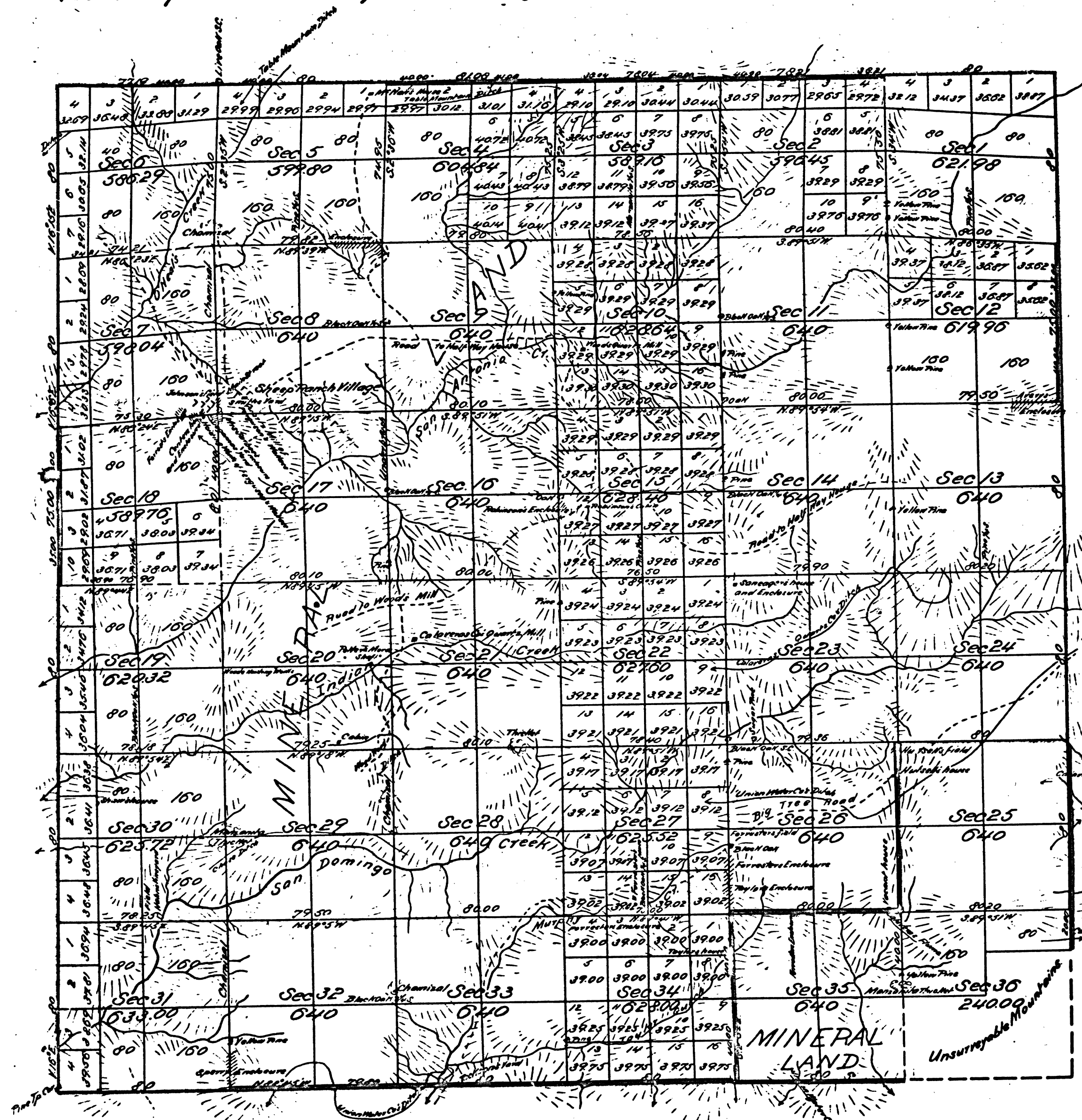


Township No 4 North, Range No 14 East, Mount Diablo Meridian.



Transmitted for filing in Register's Office  
at Sacramento April 18<sup>th</sup> 1876.

Aggregate Area of Public Land 22,133.48 Acres  
Estimated - Unsurrendered Mountain Land 400.00 -  
Aggregate 22,533.48 -

DEPARTMENT OF THE INTERIOR,  
GENERAL LAND OFFICE,  
Washington, D. C. Sept. 6, 1907.  
I hereby certify that this is a true copy  
of the plat of official survey of the lands  
to which it relates, on file in this office.

*W. S. Ford*  
Recorder, General Land Office.

Variation reported by Beaurain 10 1/2° E.

Survey Designated	By Whom Surveyed	Date of Contract	Amount of Survey	When Surveyed
Line colored red	Fleming Amyx	September 30 1858		1859
Township line colored blue	A. B. Beaurain	August 13 1874		1874
line - green		June 15 1875	7.16 7chs 32 1/2	1875
Section line colored red			53 - 69 - 64 -	1875
colored green			3 - 00 - 00 -	December 15 1875

The above Map of Township No 4 North, Range No 14 East, Mount Diablo Meridian is strictly conformable to the field notes of the Survey stored on file in this Office, which have been examined and approved.  
Surveyor General's Office  
San Francisco California  
April 18<sup>th</sup> 1876

*W. S. Ford*

41 358

