

# CORNER RECORD

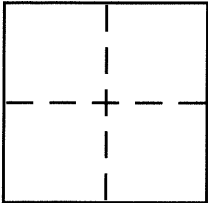
BK 72 PG 60

Document Number C127487

City of OAKLAND

County of ALAMEDA, California

Brief Legal Description LOT 976, SMITH RESERVE (17 M 104)



## CORNER TYPE

Government Corner ☐ Control ☐  
Meander ☐ Property ☒  
Rancho ☐ Other ☐  
Date of Survey AUG. 22, 2015

## COORDINATES (Optional)

N. \_\_\_\_\_  
E. \_\_\_\_\_  
Zone \_\_\_\_\_ NAD27 ☐ NAD83 ☐  
NAD83 Epoch \_\_\_\_\_  
Elev. \_\_\_\_\_  
Vert. Datum: NGVD29 ☐ NAVD88 ☐  
Meas. Units: Metric ☐ Imperial ☐

Corner – Left as found ☐ Found and tagged ☐ Established ☒ Reestablished ☐ Rebuilt ☐

Identification and type of corner found: Evidence used to identify or procedure used to establish or reestablish the corner:

SEE OTHER SIDE

A description of the physical condition of the monument as found and as set or reset:

SEE OTHER SIDE

## SURVEYOR'S STATEMENT

This Corner Record was prepared by me or under my direction in conformance with the Land Surveyor's Act on AUGUST 29, 2015.

Signed Robert J. Brunel P.L.S. or R.C.E. No. 4961

## COUNTY SURVEYOR'S STATEMENT

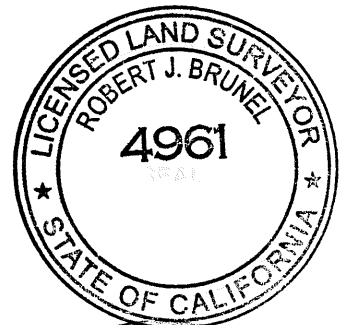
This Corner Record was received 9-1-15

and examined and filed 9-28-15

Signed Russell R. Penland P.L.S. or R.C.E. No. 5726

Title County Surveyor

County Surveyor's Comment \_\_\_\_\_

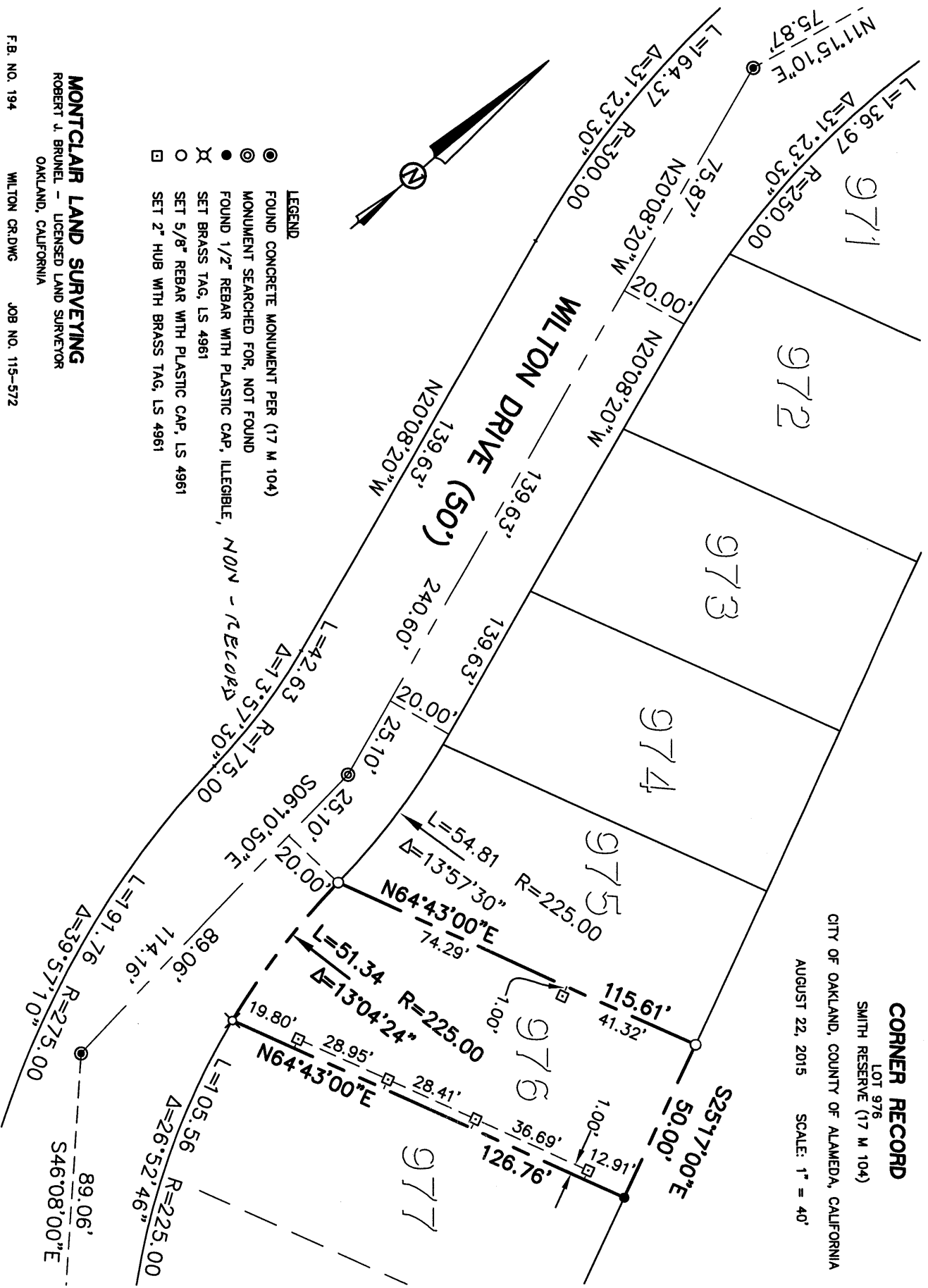


# CORNER RECORD

LOT 976  
SMITH RESERVE (17 M 104)

CITY OF OAKLAND, COUNTY OF ALAMEDA, CALIFORNIA

AUGUST 22, 2015 SCALE: 1" = 40'



**MONTCLAIR LAND SURVEYING**  
ROBERT J. BRUNEL - LICENSED LAND SURVEYOR  
OAKLAND, CALIFORNIA

F.B. NO. 194

WILTON CR.DWG

JOB NO. 115-572