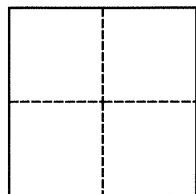


CORNER RECORD

Agency Index BK 119 PG 30
Document Number CR 12478

City of Oakland (APN 48H-7703-110) County of Alameda, California
Brief Legal Description Monument "1 SE 22" near 630 Panoramic Way



CORNER TYPE

Government Corner ☐ Control ☒
Meander ☐ Property ☐
Rancho ☐ Other ☐
Date of Survey November 7, 2018

COORDINATES (Optional)

N. _____ E. _____
Elevation _____
Units Metric ☐ U.S. Survey Foot ☐
Horizontal Datum _____
Zone _____ Epoch Date _____
Vertical Datum _____
☐ Complies with Public Resources Code §§8801-8819
☐ Complies with Public Resources Code §§8890-8902

PLS Act Ref.: ☐ 8765(d) ☒ 8771 ☐ 8773 ☐ Other:
Corner/
Monument: ☐ Left as found ☐ Established ☒ Rebuilt ☐ Pre-Construction
☐ Found and tagged ☐ Reestablished ☐ Referenced ☒ Post-Construction

Narrative of corner identified and monument as found, set, reset, replaced, or removed:

☒ See sheet #2 for description(s):

City monument, referenced per CR 7957, was destroyed during water line construction. A new brass disk and monument well was installed in the original location using found reference points per CR 7957. See sheet 2.

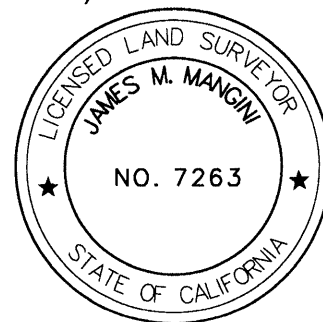
Reference EBMUD Field Book 4487, Page 16 and CR 7957 (Reymann/Baumann)

SURVEYOR'S STATEMENT

This Corner Record was prepared by me or under my direction in conformance with

the Professional Land Surveyors' Act on November 21, 2018

Signed James M. Mangini P.L.S. or R.C.E. No. 7263



COUNTY SURVEYOR'S STATEMENT

This Corner Record was received 21 NOVEMBER 2018

and examined and filed 2 MAY 2019

Signed Michael Rubner P.L.S. or R.C.E. No. 6843

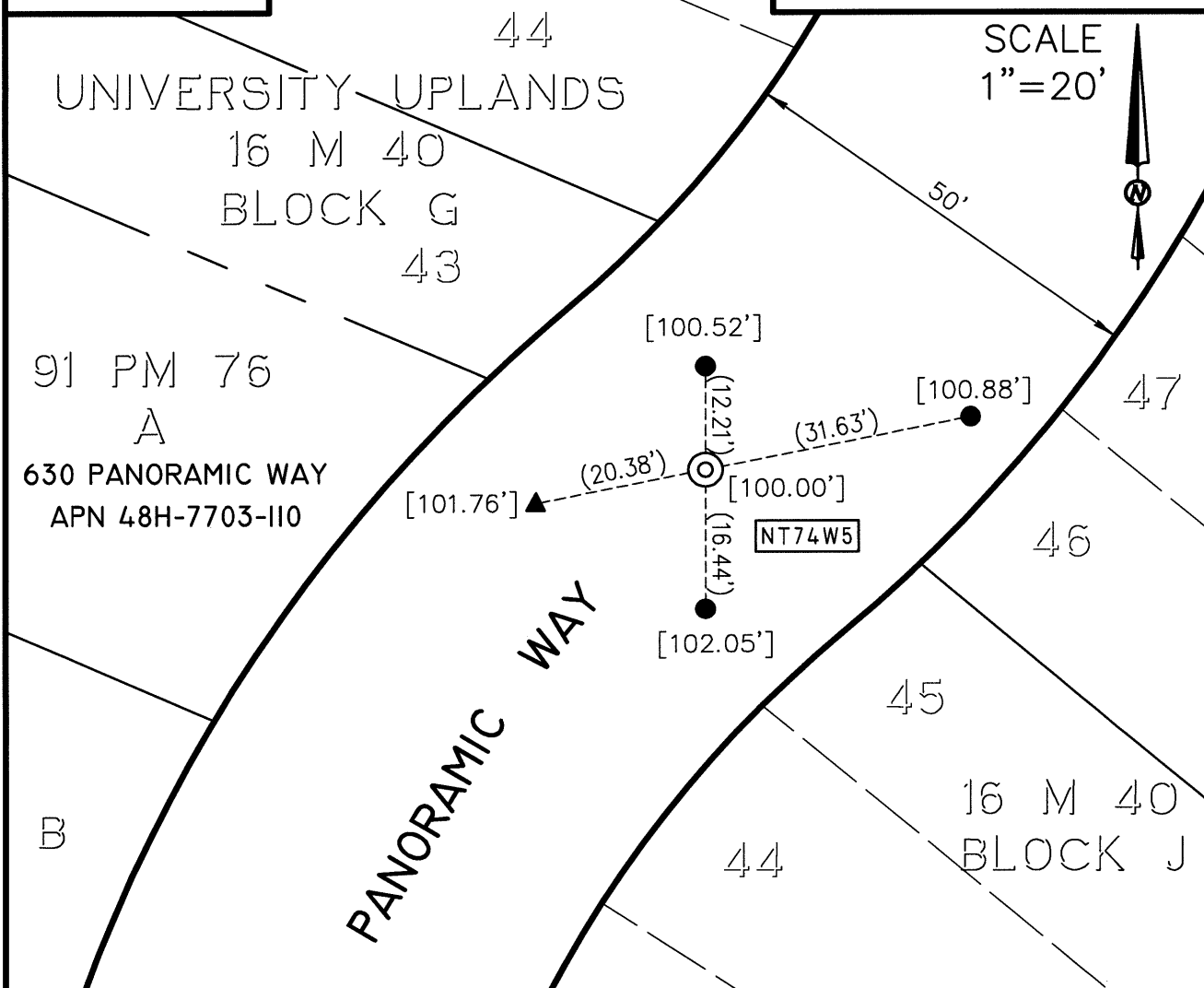
Title County Surveyor

County Surveyor's Comment



OAKLAND

ALAMEDA COUNTY

**LEGEND**

SET 3 1/4" BRASS DISK WITH PUNCH IN CONCRETE, STAMPED "1-SE-22 RESET, EBMUD SURVEY 2018", DOWN 0.8' IN STANDARD MONUMENT WELL, SET IN ORIGINAL MONUMENT POSITION



FOUND 5/8" REBAR AND CAP, STAMPED "EBMUD MON RP", PER CR 7957



FOUND MAG NAIL AND 1-1/2" WASHER, STAMPED "EBMUD MON RP", PER CR 7957



ASSUMED ELEVATION (MEASURED USING A LEICA DNA10 DIGITAL LEVEL), PER CR 7957

NT74W5

ALAMEDA COUNTY MONUMENT I.D.

(20.38') RP DISTANCE PER CR 7957

ADDRESS: 630 PANORAMIC WAY

APN: 48H-7703-110

