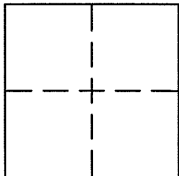


**CORNER RECORD**Document Number CR 5752City of OAKLAND and County of ALAMEDA, CaliforniaBrief Legal Description: LOT 18, BLOCK 27 MAP ENTITLED "HAVENSCOURT", BOOK 26, OF MAPS, PAGE 90.**CORNER TYPE**

Government Corner [ ] Control [ ]  
 Meander [ ] Property ☒  
 Rancho [ ] Other [ ]

Date of Survey 04/01/13**COORDINATES (Optional)**

N: \_\_\_\_\_  
 E: \_\_\_\_\_  
 Zone: \_\_\_\_\_ NAD 27 [ ] NAD 83 [ ]  
 Elev: \_\_\_\_\_  
 Vert. Datum: NGVD29 [ ] NAVD88 [ ]  
 Meas. Units: Metric [ ] Imperial ☒

**CORNER** -- ☐ LEFT AS FOUND ☐ FOUND AND TAGGED ☒ ESTABLISHED ☐ REESTABLISHED ☐ REBUILT

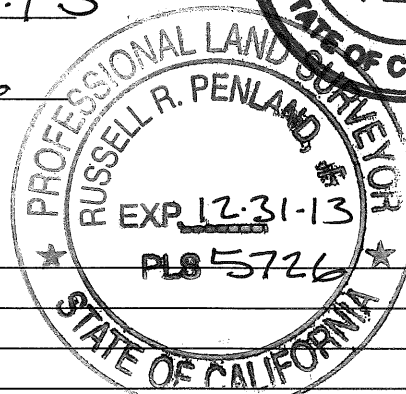
Identification and type of corner found: Evidence used to identify or procedure used to establish or reestablish the corner:

**FOUND NAIL IN CONCRETE IN MONUMENT IN WELL ALONG ARTHUR STREET PER OAKLAND MONUMENT MAP NO 113.**

A description of the physical condition of the monument as found and as set or reset: \_\_\_\_\_  
**ORIGINAL CORNERS NOT FOUND. SET POINTS AS SHOWN ON REVERSE.**

**SURVEYOR'S STATEMENT:**

The corner record was prepared by me or under my direction in conformance with

the Land Surveyors' Act on JUNE 28TH 2013Signed: Theodore H. LaskerL.S.# 8420**COUNTY SURVEYOR'S STATEMENT:**The corner record was received 7.23.13and examined and filed 8.22.13Signed: Russell R. PenlandR.C.E. or L.S. No. 5726Title: COUNTY SURVEYOR**COUNTY SURVEYOR'S COMMENT:** \_\_\_\_\_

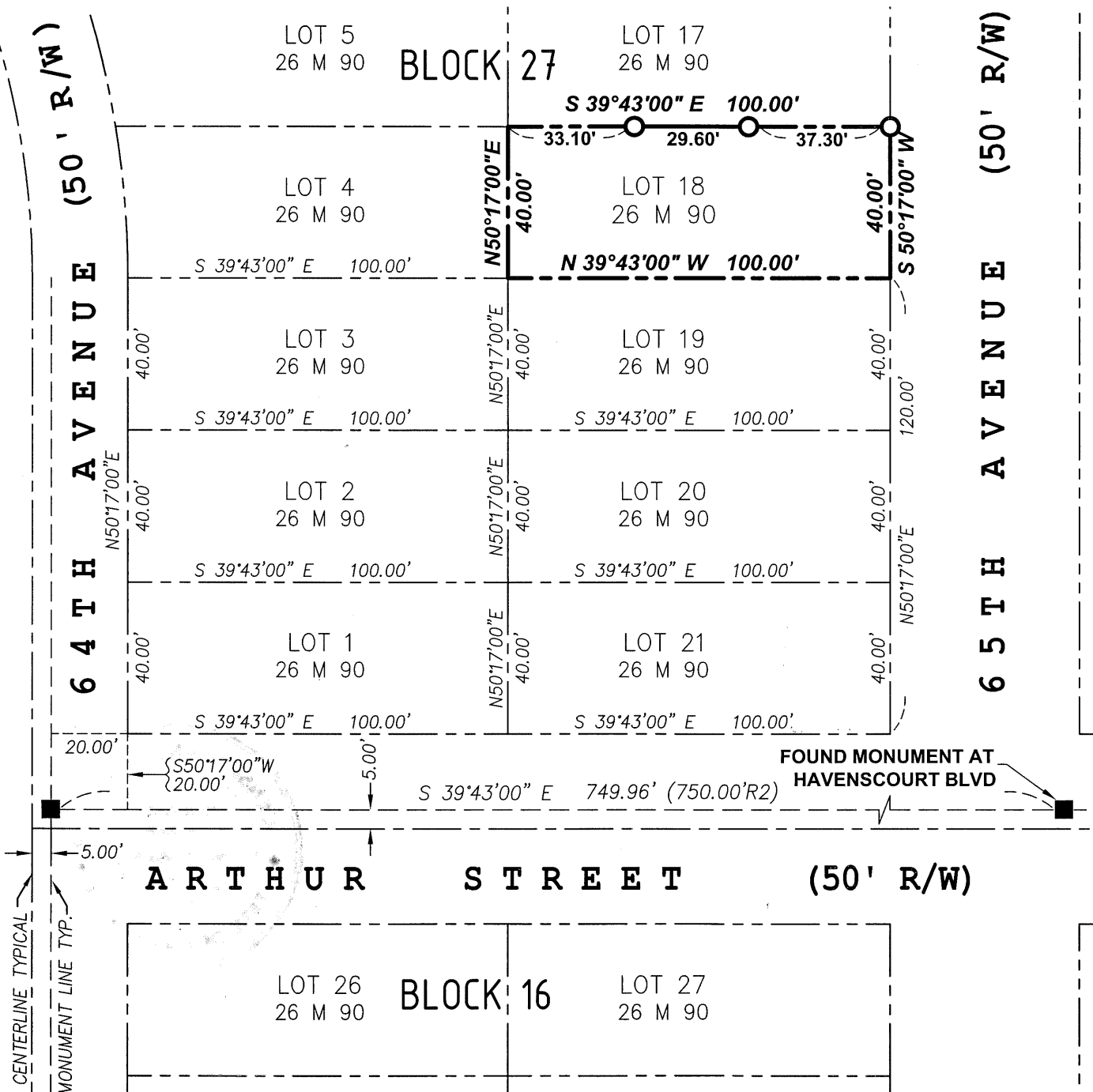
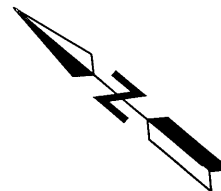
XR75P3

# LEGEND

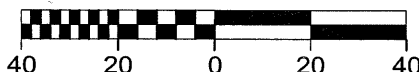
- SUBJECT BOUNDARY LINES
- OTHER BOUNDARY LINES PER R1
- MONUMENT REFERENCE LINE
- CENTERLINE
- FOUND STANDARD WELL MONUMENT PER R2
- SET #5 REBAR AND CAP LS 8420
- R1 "HAVENSCOURT" MAP BOOK 26, PAGE 90
- R2 OAKLAND MONUMENT MAP NO. 113

AMERICAN LAND SURVEYING, INC.  
1390 Market St, #112, San Francisco, Ca 94102  
Ph: (415) 888-8580 (ALS13033) Fx: (866) 260-5454

## CORNER RECORD



ORIGINAL SCALE: 1" = 40'



APN:039-3268-011