

McCLELLAN ROAD

CONSISTING OF TWO SHEETS
BEING A PORTION OF THE NW 1/4 OF
SEC. 24, T. 7S., R. 2W., M.D.M. AND LYING
WITHIN THE CITY OF CUPERTINO, CAL.

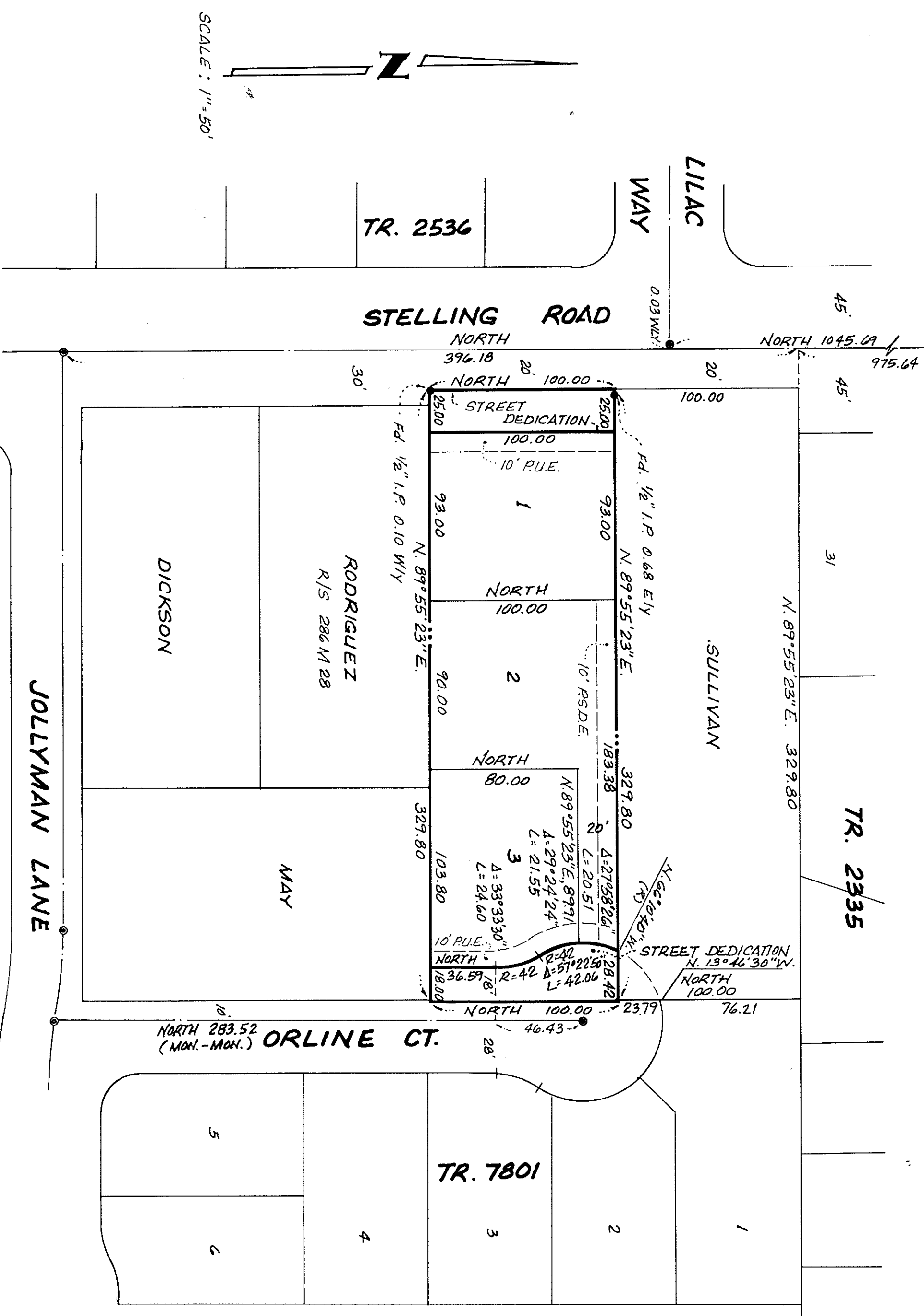
APRIL 1 1986

1986

LEGEND & NOTES

THE DISTINCTIVE BORDER INDICATES THE BOUNDARY OF LAND SUBDIVIDED BY THIS MAP. AREA = 0.757 AC. ±. ALL DISTANCES AND DIMENSIONS ARE GIVEN IN FEET AND DECIMALS THEREOF.

●●	INDICATES	STANDARD CITY MONUMENT F.D.
●	INDICATES	3/4" IRON PIPE F.D.
○	INDICATES	3/4" IRON PIPE SET.
—	INDICATES	DISTINCTIVE BORDER
P.U.E.	INDICATES	PUBLIC UTILITY EASE.
P.S.D.E.	INDICATES	PVT. STORM DRAIN EASE.



BASIS OF BEARINGS

THE BEARING OF NORTH ALONG THE CENTER-
LINE OF STEELING ROAD AS SHOWN ON TRACT
Nº 2335 FILED FOR RECORD IN BK. 105 OF MAPS,
AT PAGES 40 & 41 SANTA CLARA CO. RECORDS.

KIRKEBY & ASSOCIATES

CIVIL ENGINEERS
12228 SARATOGA-SUNNYVALE
SARATOGA, CALIF.

RECORDED

July 2, 1986

FILE NO 8846052

BK. 561

PGS. 43

44

SHEET 2 OF 2 SHEETS

JOB N° 86014