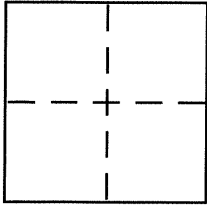


CORNER RECORDDocument Number CR 7398
County of ALAMEDA, CaliforniaCity of OAKLANDBrief Legal Description LOT 14, BLOCK B (3 M 41-42)**CORNER TYPE**

Government Corner ☐ Control ☐
 Meander ☐ Property ☒
 Rancho ☐ Other ☐
 Date of Survey JUNE 5, 2015

COORDINATES (Optional)

N. _____
 E. _____
 Zone _____ NAD27 ☐ NAD83 ☐
 NAD83 Epoch _____
 Elev. _____
 Vert. Datum: NGVD29 ☐ NAVD88 ☐
 Meas. Units: Metric ☐ Imperial ☐

Corner – Left as found ☐ Found and tagged ☐ Established ☒ Reestablished ☐ Rebuilt ☐

Identification and type of corner found: Evidence used to identify or procedure used to establish or reestablish the corner:

USED ORIGINAL SUBDIVISION MONUMENTS IN
FRUITVALE AVENUE, HELD CLOSER MONUMENT.

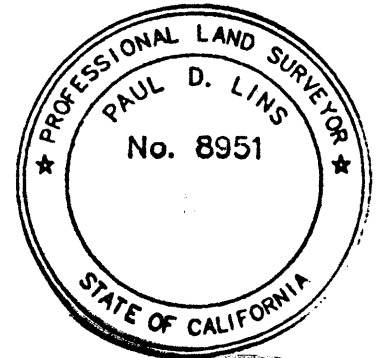
A description of the physical condition of the monument as found and as set or reset:

SEE REVERSE

SURVEYOR'S STATEMENT

This Corner Record was prepared by me or under my direction in conformance with
 the Land Surveyor's Act on JUNE 15 2015

Signed Paul D. Lins P.L.S. or R.C.E. No. 8951

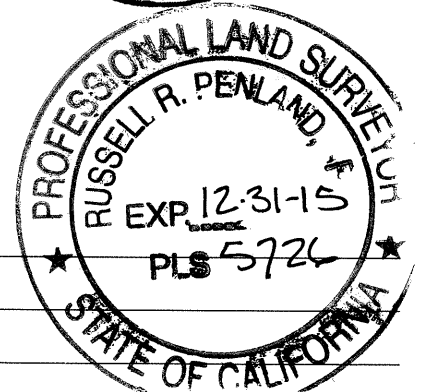
**COUNTY SURVEYOR'S STATEMENT**

This Corner Record was received 6-19-15
 and examined and filed 7-28-15

Signed Russell R. Penland P.L.S. or R.C.E. No. 5726

Title COUNTY SURVEYOR

County Surveyor's Comment _____

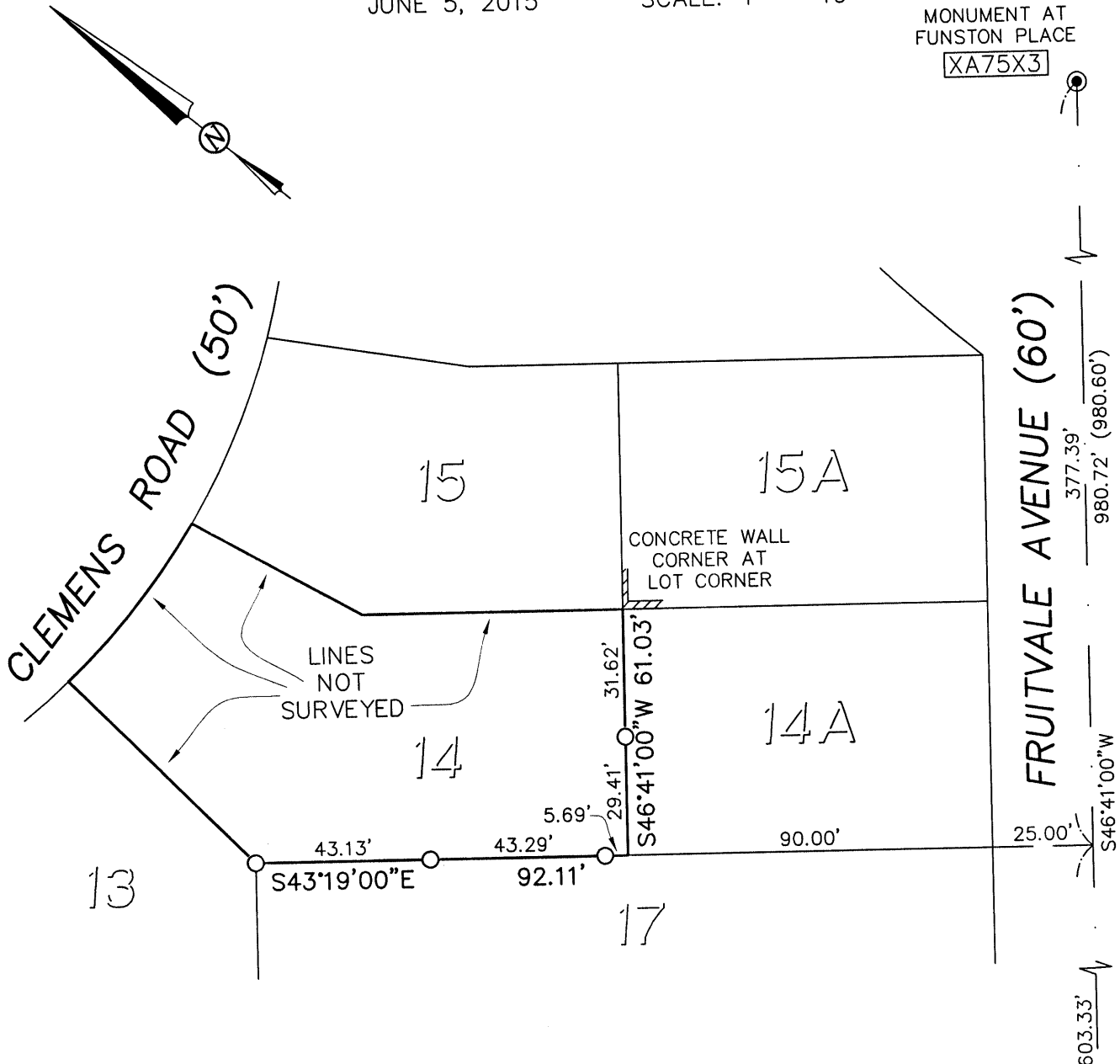


CORNER RECORD

LOT 14, BLOCK 8
MAP OF FRUITVALE GARDEN FARMS (3 M 41-42)
OAKLAND, ALAMEDA COUNTY, CALIFORNIA
ASSESSOR'S PARCEL 029A-1318-010
JUNE 5, 2015 SCALE: 1" = 40'

MONUMENT AT
FUNSTON PLACE

XA75X3



LEGEND:

- FOUND 1/4" BRASS PIN IN STANDARD MONUMENT WELL
- SET 5/8" REBAR AND PLASTIC CAP LINS LS 8951

AA##A# ALAMEDA COUNTY MONUMENT I.D.

MORAN ENGINEERING, INC.

BERKELEY, CALIFORNIA

F.B. 1547

CLEMENS-BND.DWG

JOB NO. 15-9165