

TRACT 2773

PLEASANTON TOWNSHIP, ALAMEDA COUNTY, CALIFORNIA
IN THE UNINCORPORATED TERRITORY IN THE COUNTY OF ALAMEDA

KENNETH Q. VOLK & ASSOCIATES—CONSULTING ENGINEERS

SCALE: 1"=60'

JUNE, 1965

BASIS OF BEARINGS:

The bearing of the line between the monuments on Penn Drive as said monuments are shown upon the map of Tract 2552, Pleasanton Township, Alameda County, California, Recorded February 24, 1965, in Book 49 at Pages 92 & 93, Serial N° AX 24814 is taken as N. 34° 50' 06" W.

BUILDING SETBACK:

Building Setback lines to be as required by Ordinance Code of the County of Alameda Title 9, Chapter 2, and Amendments thereto.

LANDS OF MURRAY SCHOOL DISTRICT OF ALAMEDA COUNTY STATE OF CALIFORNIA
Rec'd 1921
SUBDIVISION BOUNDARY Image 461

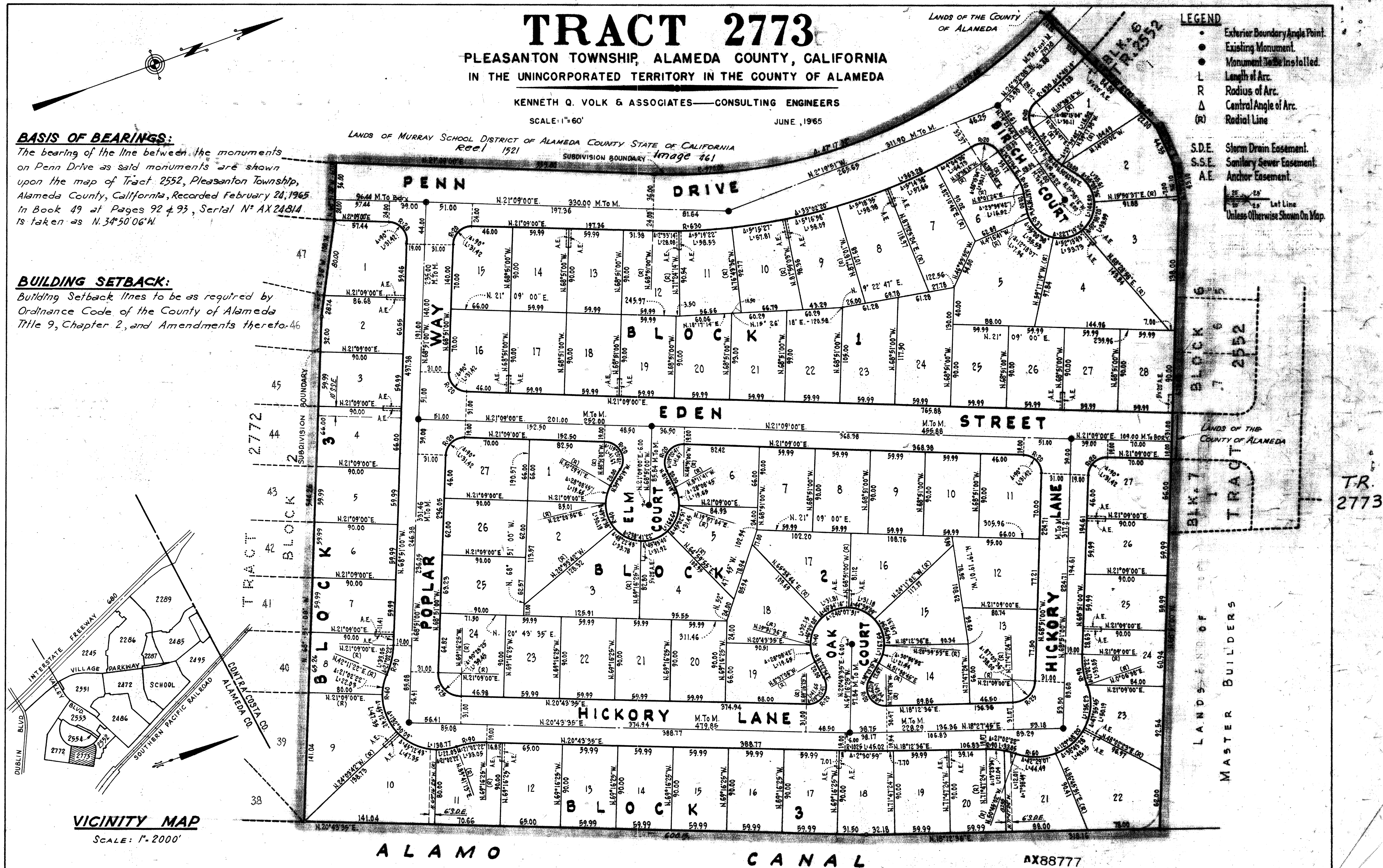
LANDS OF THE COUNTY OF ALAMEDA

LEGEND

- Exterior Boundary Angle Point
- Existing Monument
- Monument To Be Installed
- L Length of Arc
- R Radius of Arc
- Δ Central Angle of Arc
- (R) Radial Line

- S.D.E. Storm Drain Easement
- S.S.E. Sanitary Sewer Easement
- A.E. Anchor Easement

Lat Line
Unless Otherwise Shown On Map



VICINITY MAP

SCALE: 1"=2000'

ALAMO

CANAL

AX88777

SHEET 2 OF 2 SHEETS

AX88777 FILED JUNE 28 1965 BOOK 50 PAGE 50/A

TR.
2773