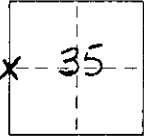


CORNER RECORD

COUNTY OF MONO T. 6N R. 24E MD MD MERIDIAN CALIFORNIA

CORNER TYPE: GOV'T. CORNER ☒ MEANDER ☐ RANCHO ☐ CONTROL ☐ OTHER ☐
CORNER IDENTIFICATION - DATE OF VISIT MARCH 23, 1988



R. #210

Photo #3 original condition

CORNER - LEFT AS FOUND ☐ FOUND AND TAGGED ☐ REESTABLISHED OBLITERATED CORNER ☐ REBUILT ☒

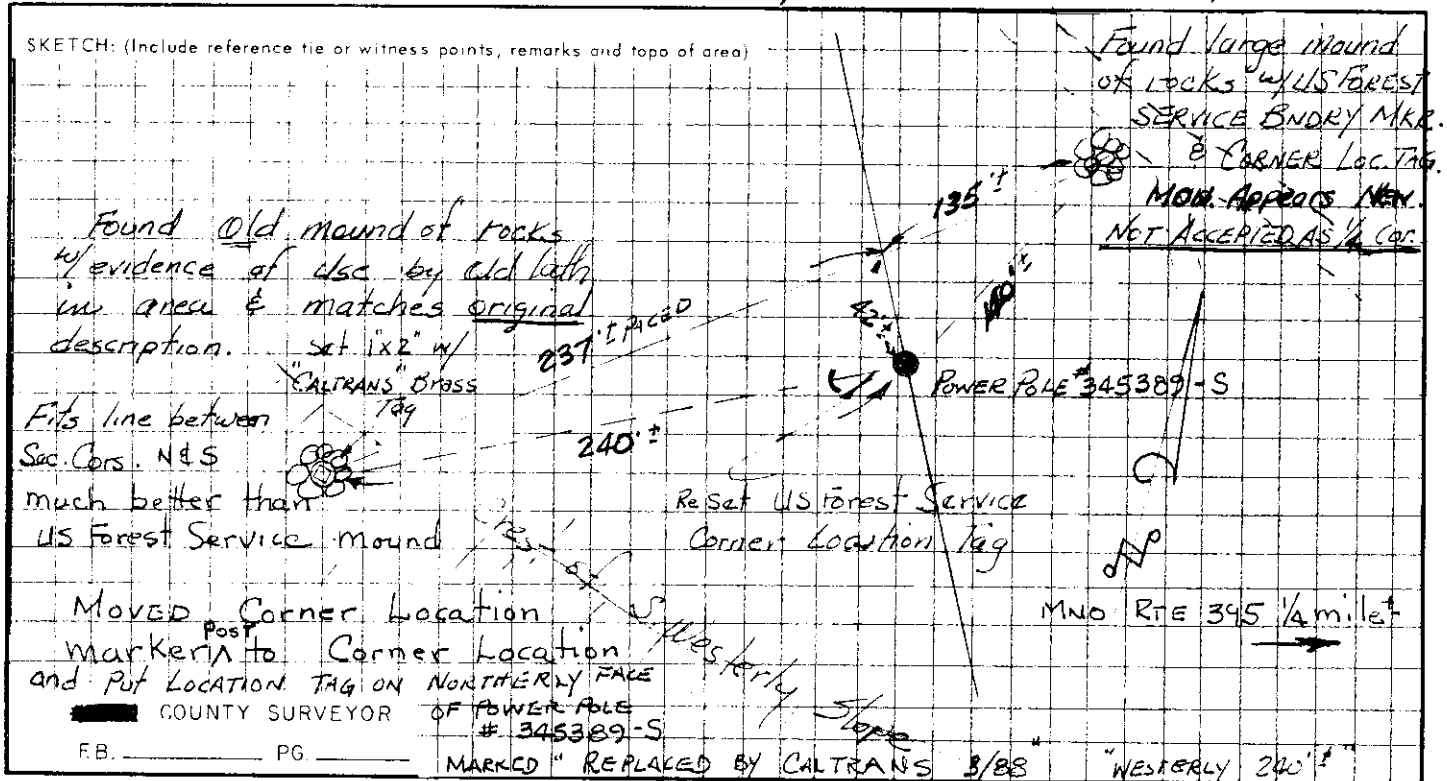
PHYSICAL DESCRIPTION OF CORNER FOUND: EVIDENCE AND METHOD USED TO IDENTIFY OR REESTABLISH From the Standard Corner of 34/35 Paced 2640'± on Approx. Sec. Line.

Found old mound of rocks w/ old lath in vicinity - Fits, other corners much better than the newer (1967) mound of rocks w/ US Forest Service Post, Corner Location Marker & boundary sign.

PHYSICAL DESCRIPTION OF MONUMENTS REBUILT OR PERPETUATED Set 1"x2"x8" w/ Brass CALTRANS Tag and Cup tack in center of mound. Enlarged the mound of rocks, Moved the Alum. Post to 1/4 Cor. & Set the Corner location marker on the Northerly face of Pwr. Pole # 345389-S @ 5 1/2'± above ground. & Sampled as noted on sketch below.

CALIFORNIA COORDINATE SYSTEM ORDER: FIRST ☐ SECOND ☐ THIRD ☒ ASSUMED COORS.
STATIONS USED: NGS (USC & GS) ☐ STATE ☒ COUNTY ☐ OTHER ☐ STATION ☐
ZONE ☐ ELEVATION ☐ NORTHINGS (Y) 99,836.2± EASTINGS (X) 98,909.8±

SKETCH: (Include reference tie or witness points, remarks and topo of area)



SURVEYOR'S CERTIFICATE

THIS CORNER RECORD WAS PREPARED BY ME OR UNDER MY DIRECTION IN CONFORMANCE WITH THE LAND SURVEYORS ACT ON MARCH 23, 1988

SIGNED: [Signature]

L.S. or R.E.F. No. 14468

SEAL

COUNTY SURVEYOR'S CERTIFICATE

THIS CORNER RECORD WAS RECEIVED 9-30 1988 AND EXAMINED AND FILED 9-30 1988

BY: [Signature] TITLE: DEPUTY COUNTY SURVEYOR

DOCUMENT No. 6N24-35-5

STATEMENT ON BACK OF SHEET

YES ☐ NO ☒