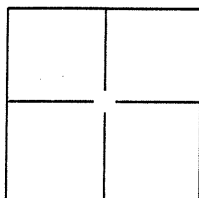


CORNER RECORD

BK 76 PG 25Document Number CR7734City of UNINCORPORATED EDEN TOWNSHIPCounty of Alameda, CaliforniaBrief Legal Description INTERSECTION OF HATHAWAY AVE AND W BLOSSOM WAY

CORNER TYPE

Government Corner ☐ Control ☒
Meander ☐ Property ☐
Rancho ☐ Other ☐

Date of Survey 11/11/2015

COORDINATES(Optional)

N. _____
E. _____
Zone _____ NAD27 ☐ NAD83 ☐
NAD83 Epoch _____
Elev. _____
Vert. Datum: NGVD29 ☐ NADV88 ☐
Meas. Units: Metric ☐ Imperial ☐

Corner - Left as found ☒ Found and tagged ☐ Established ☐ Reestablished ☐ Rebuilt ☐

Identification and type of corner found: Evidence used to identify or procedure used to establish or reestablish the corner:
FOUND CONCRETE PIN MONUMENT IN MONUMENT WELL.

IN COMPLIANCE WITH SECTION 8771 OF THE PLS ACT, THIS CORNER RECORD IS BEING FILED
TO ESTABLISH THE POSITION OF AN EXISTING MONUMENT PRIOR TO STREET RECONSTRUCTION.
SEE REVERSE FOR LOCATION.

A description of the physical condition of the monument as found and as set or reset: _____

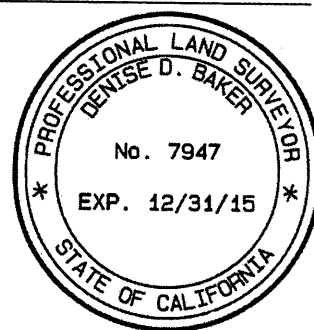
SET CUT X'S IN CONCRETE FOR REFERENCE POINTS.

SEE REVERSE FOR LOCATION.

SURVEYOR'S STATEMENT

This Corner Record was prepared by me or under my direction in conformance with
the Land Surveyor's Act on DECEMBER 22, 2015.

Signed Denise D. Baker P.L.S. or R.C.E. No.: LS 7947



COUNTY SURVEYOR'S STATEMENT

This Corner Record was received 30 NOVEMBER, 2015 and examined
and filed 21 JANUARY, 2016.

Signed Michael R. Blum P.L.S. or R.C.E. No.: 6843

Title COUNTY SURVEYOR

County Surveyor's Comment _____

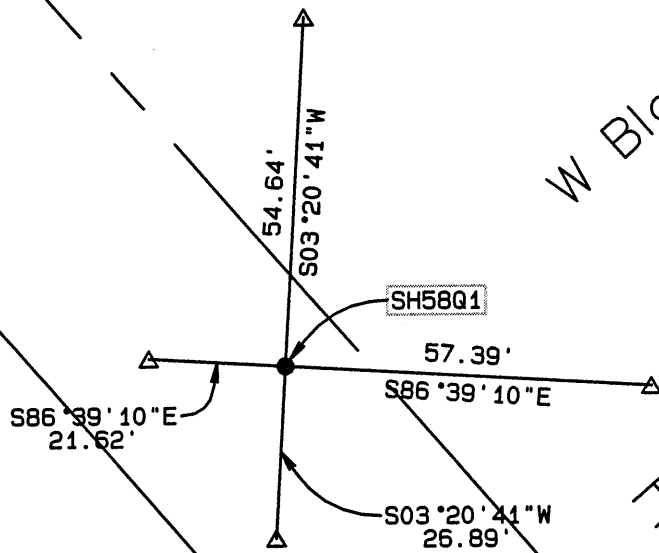


SPEC. 2244 R23419

△ SET CUT X IN CONCRETE PAVEMENT

● FOUND CONCRETE PIN MONUMENT
IN MONUMENT WELL

SH58Q1 ALAMEDA COUNTY
MONUMENT I.D.



W Blossom Way

Hathaway Ave

Bunny Court

Prepared by:
CONSTRUCTION SURVEY, INC.
800 BANCROFT WAY STE 201
BERKELEY, CA 94710

JOB NO. 150703
SCALE: 1"=30'
12/22/2015