

3/12/2018 10:59:44 AM

E

D

C

B

A

E

D

C

B

A



**Chick-fil-A**

Chick-fil-A  
5200 Buffington Road  
Atlanta, Georgia 30349-2998

**INTERPLAN**

ARCHITECTURE  
ENGINEERING  
INTERIOR DESIGN  
PROJECT MANAGEMENT

604 COURTLAND STREET  
SUITE 100  
ORLANDO, FLORIDA 32804  
PH 407.645.5038  
FX 407.629.9124

SEAL: THIS DOCUMENT IS NOT FOR CONSTRUCTION  
UNLESS THE ARCHITECT OR ENGINEER'S  
SIGNATURE AND SEAL APPEAR BELOW

**CHICK-FIL-A**  
Cherokee Place FSR  
115 Cherokee Place, Cartersville, GA 30121

**FSR# 00534**

REVISION SCHEDULE  
NO. DATE DESCRIPTION

CONSULTANT PROJECT # 2016.0430

PRINTED FOR Bid

DATE November 20, 2017

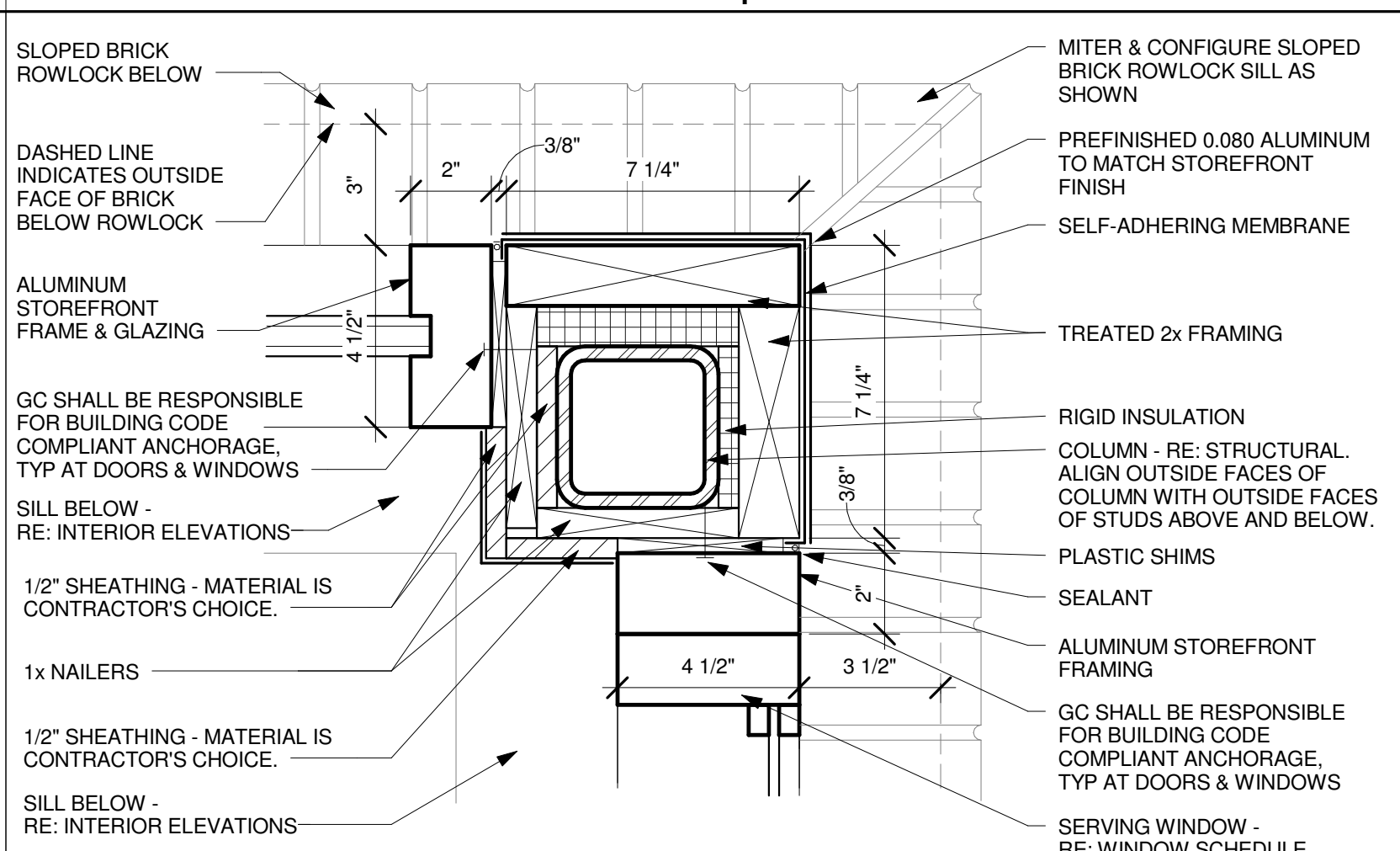
DRAWN BY Designer

Information contained on this drawing and in all digital files  
produced for above named project may not be reproduced in  
any manner without express written or verbal consent from  
Interplan LLC. RESERVES COPYRIGHT & OTHER RIGHTS RESPECTING THESE DOCUMENTS TO BE ORIGINAL, BE C&P PURPOSE, 120% WHICH THEY WERE PREPARED. REPRODUCTIONS, CHANGES OR ASSIGNMENTS ARE PROHIBITED.

EXTERIOR DETAILS

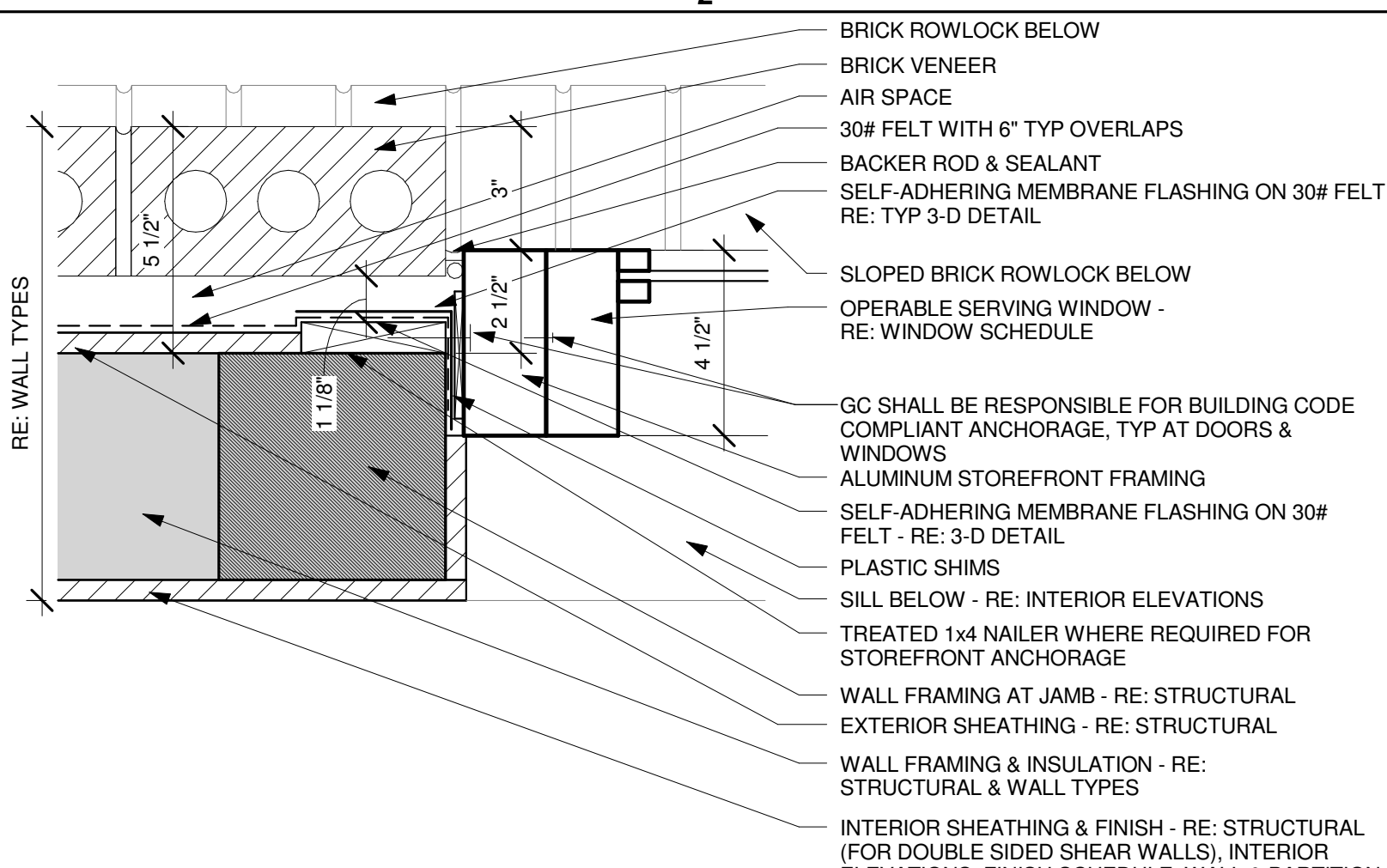
SHEET NUMBER

**A-502**



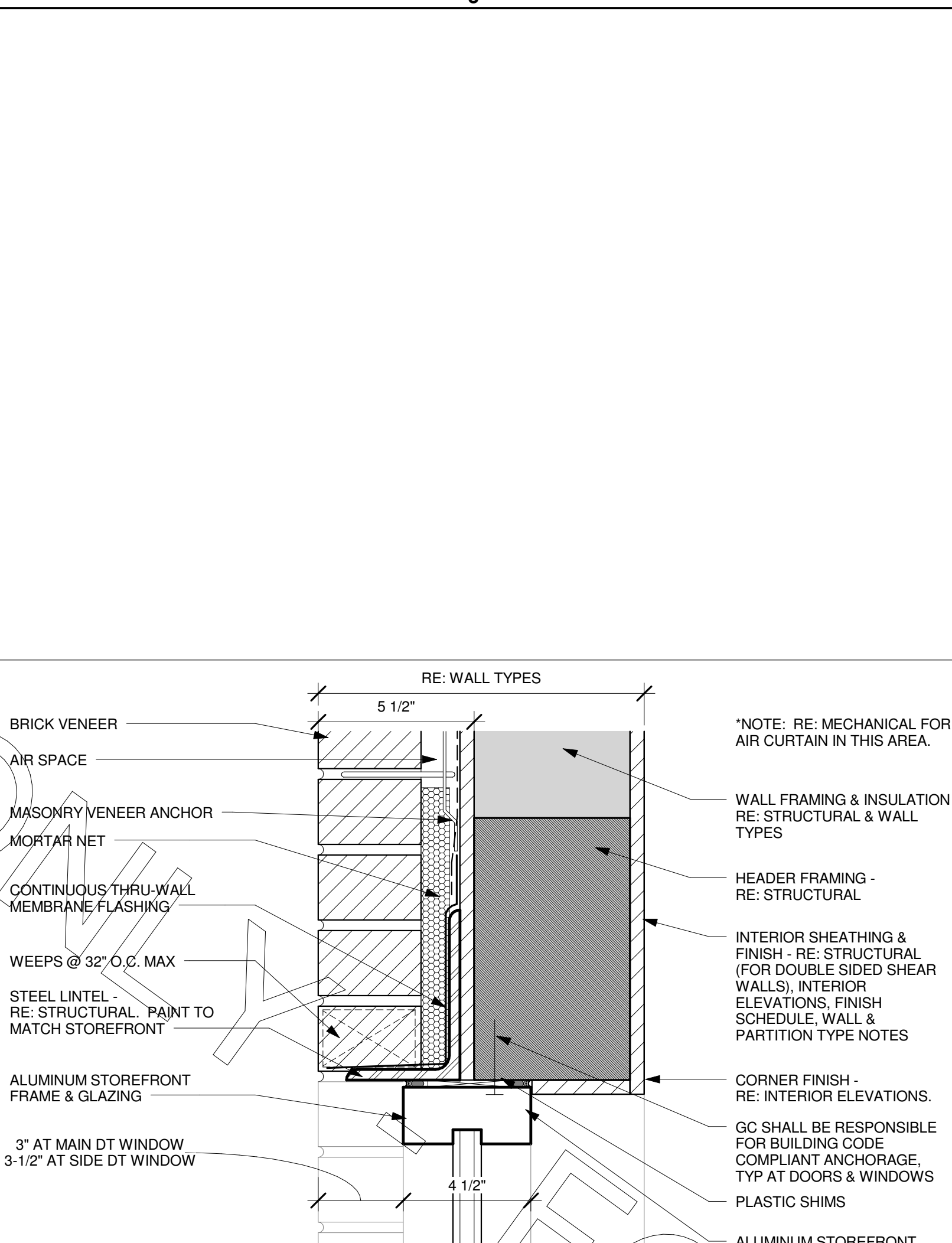
**E1 MAIN & SIDE DRIVE-THRU WINDOW JUNCTION**

3' = 1'-0"



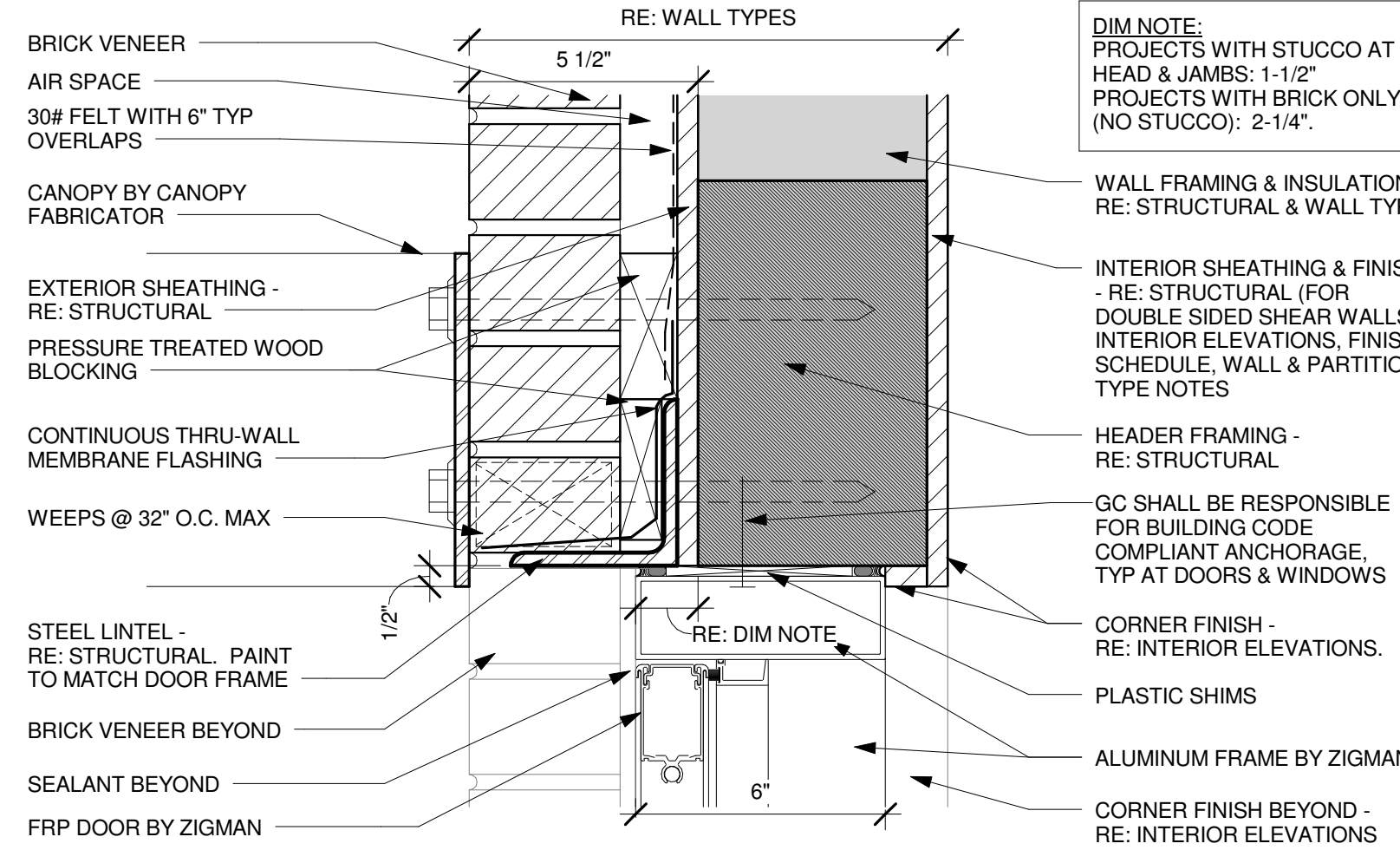
**E2 MAIN DRIVE-THRU WINDOW JAMB**

3' = 1'-0"



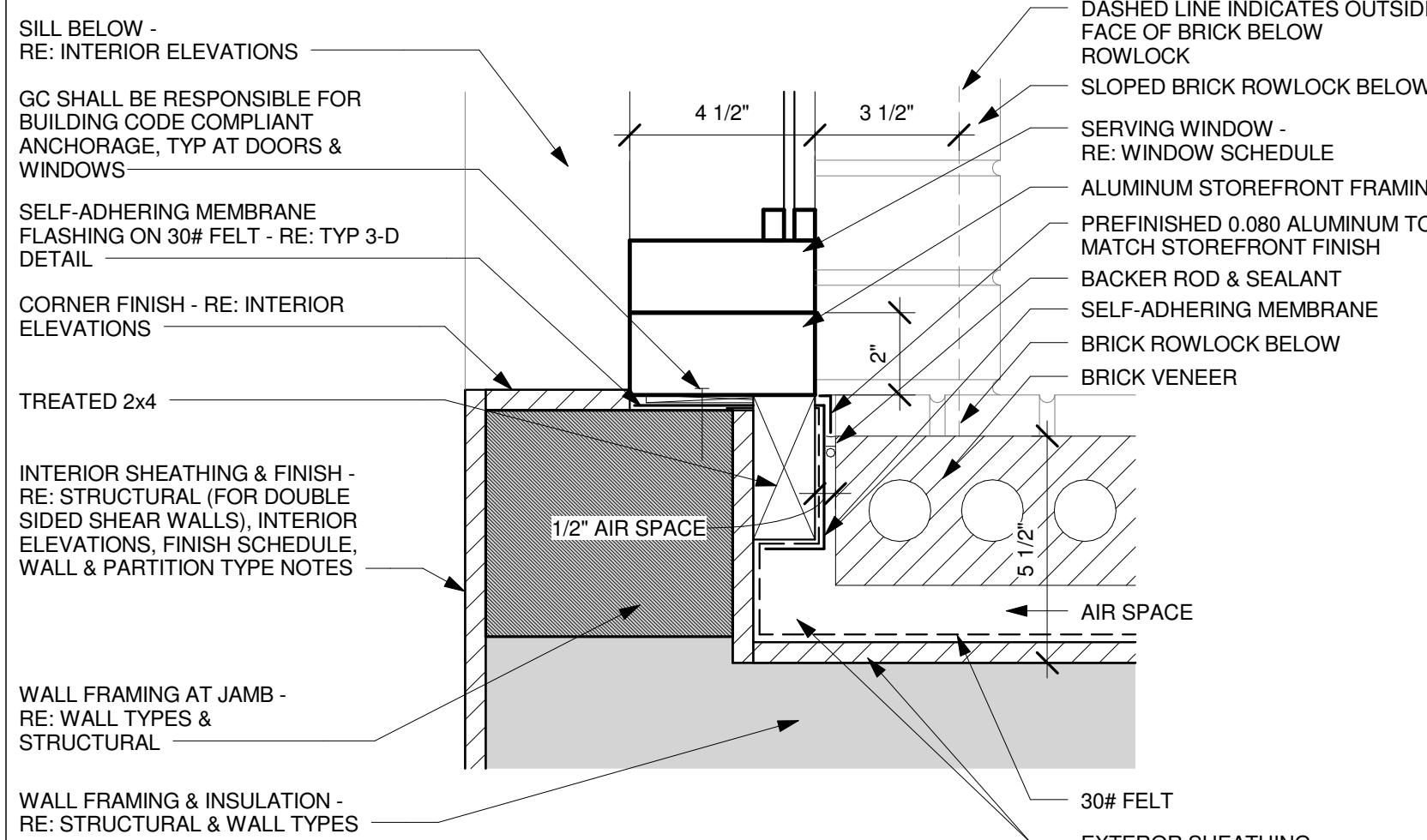
**D3 DRIVE-THRU WINDOW HEAD**

3' = 1'-0"



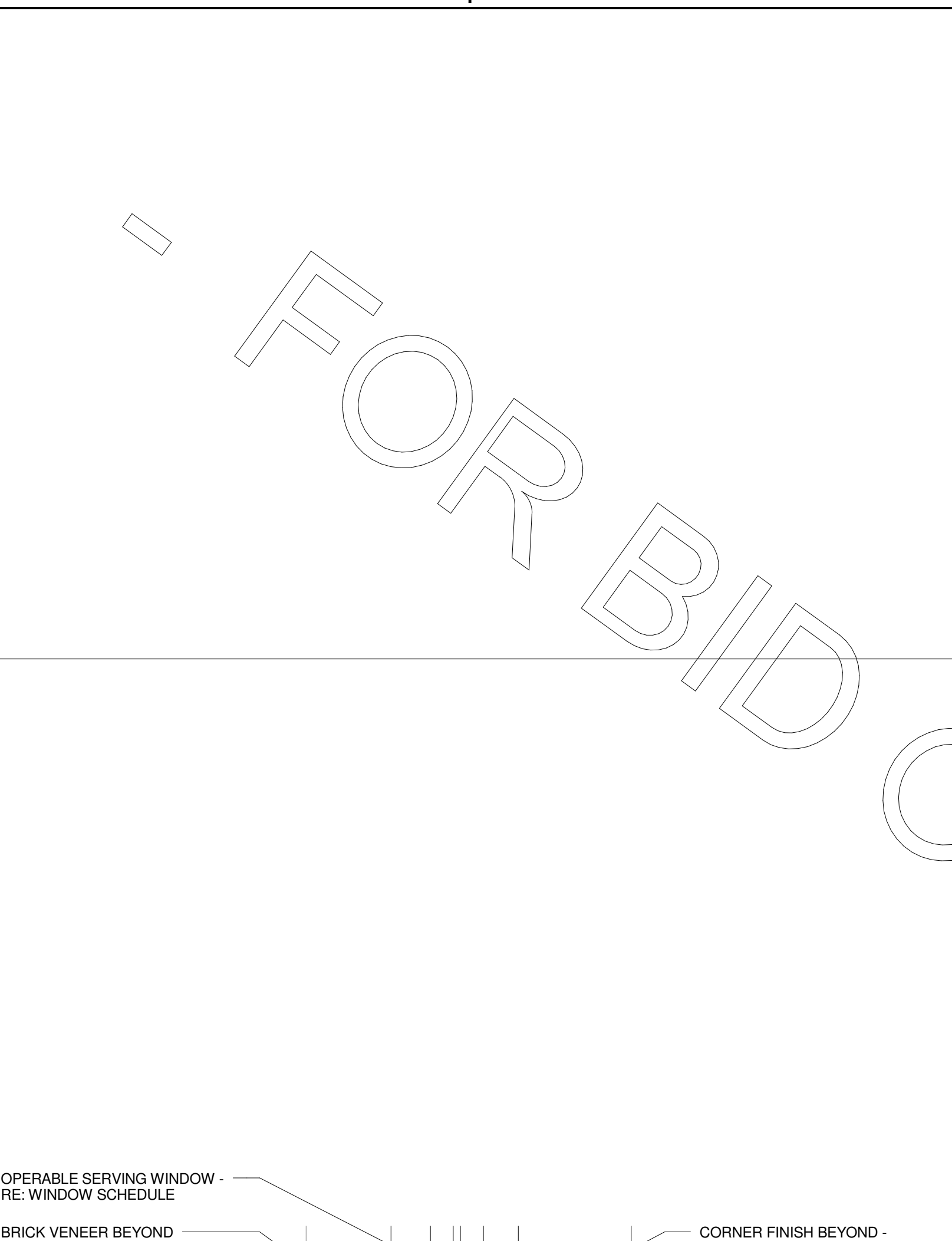
**D2 EXTERIOR SERVICE DOOR HEAD - BRICK**

3' = 1'-0"



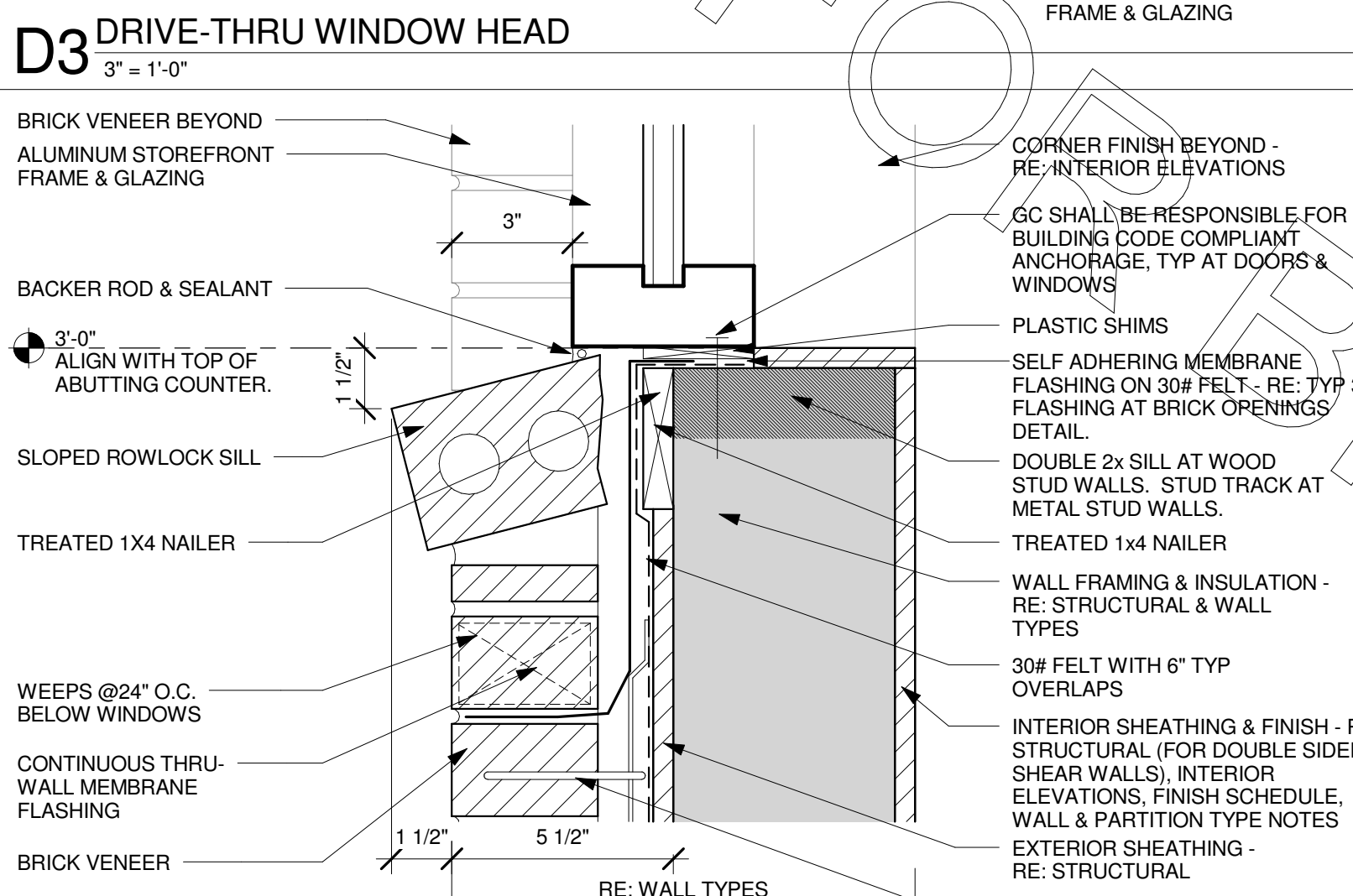
**D1 SIDE DRIVE-THRU WINDOW JAMB**

3' = 1'-0"



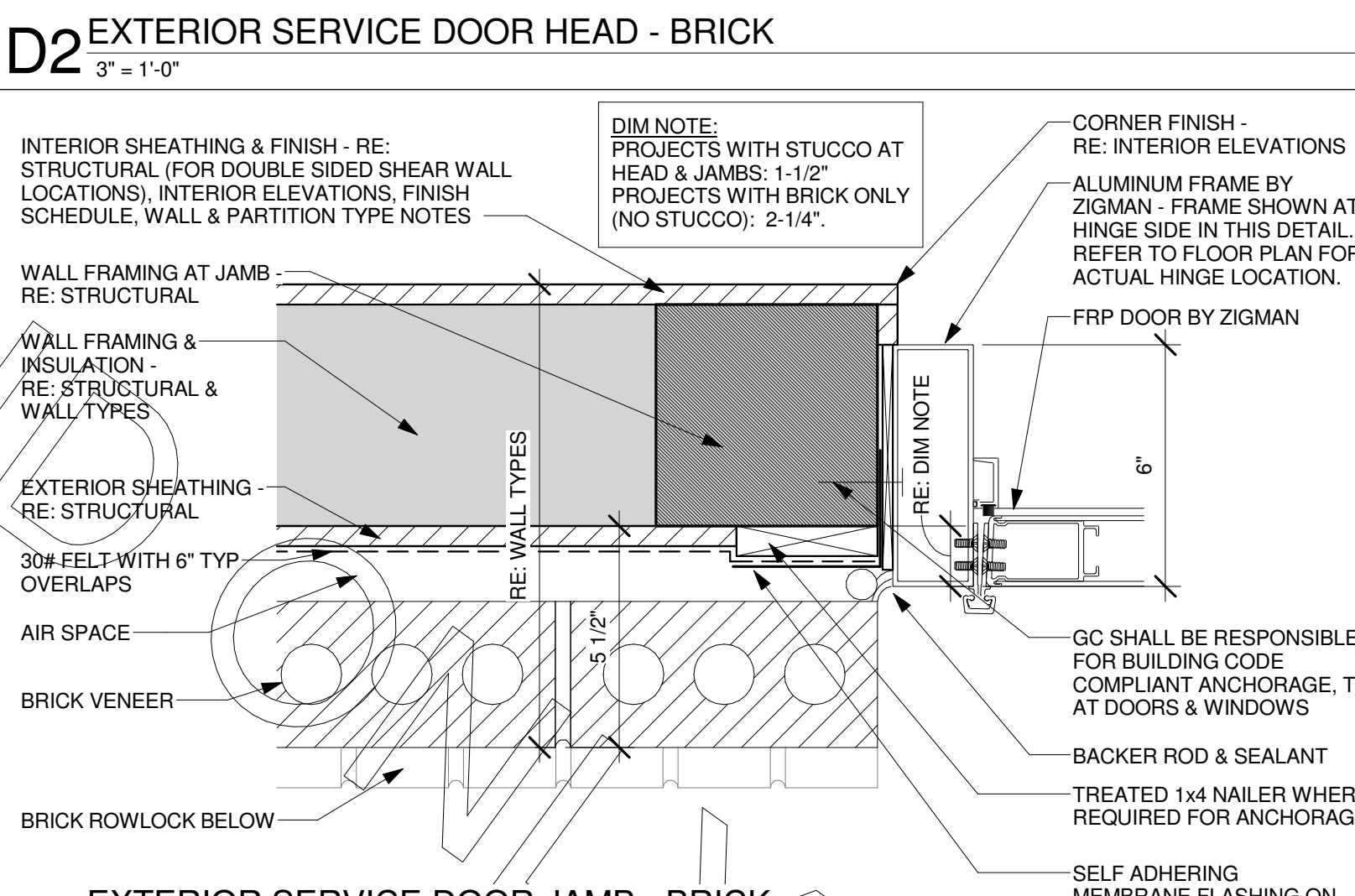
**C4 DRIVE-THRU WINDOW SILL - OPERABLE**

3' = 1'-0"



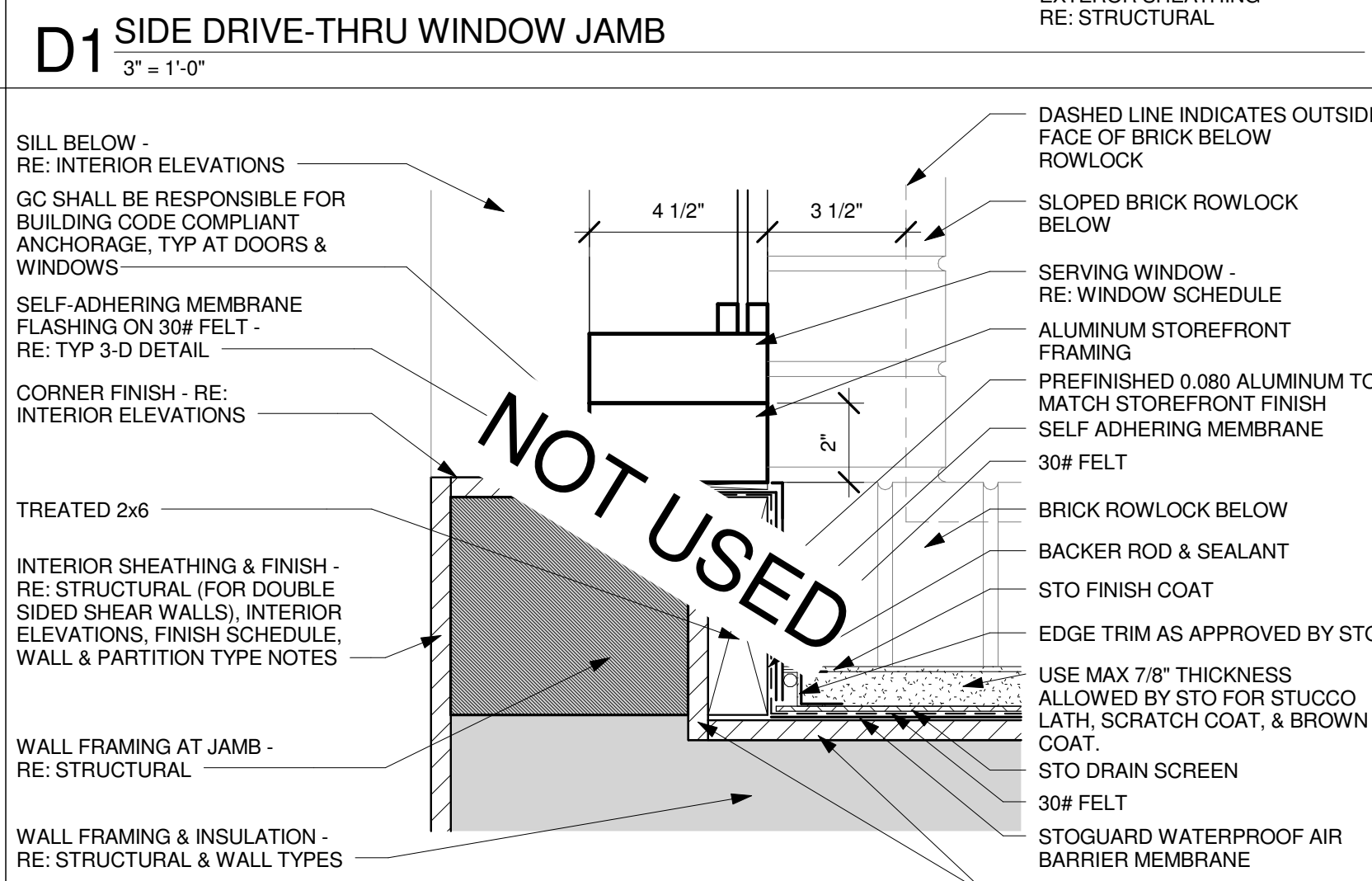
**C3 MAIN DRIVE-THRU WINDOW SILL AT FIXED STOREFRONT**

3' = 1'-0"



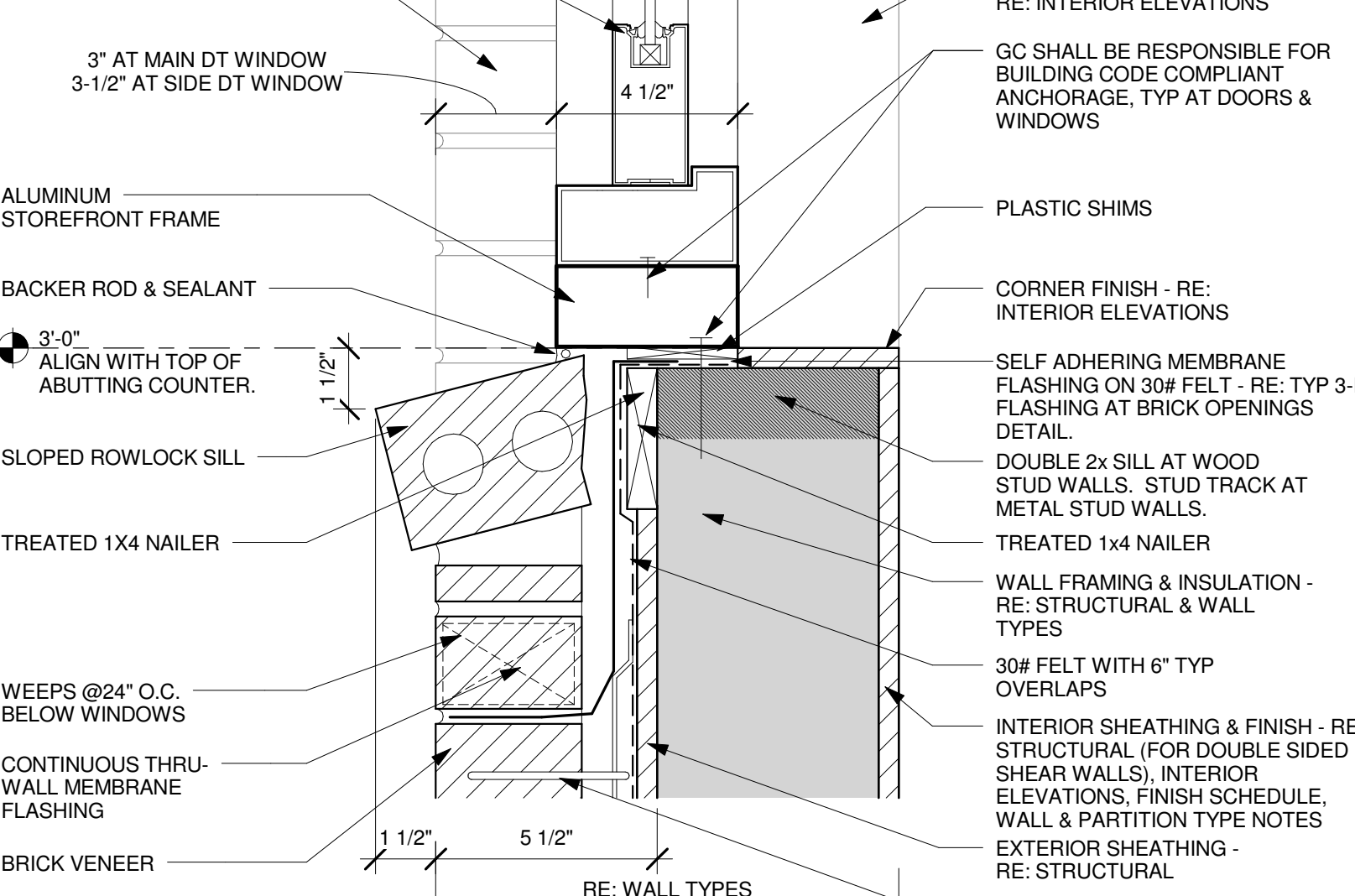
**C2 EXTERIOR SERVICE DOOR JAMB - BRICK NON-RECESSED**

3' = 1'-0"



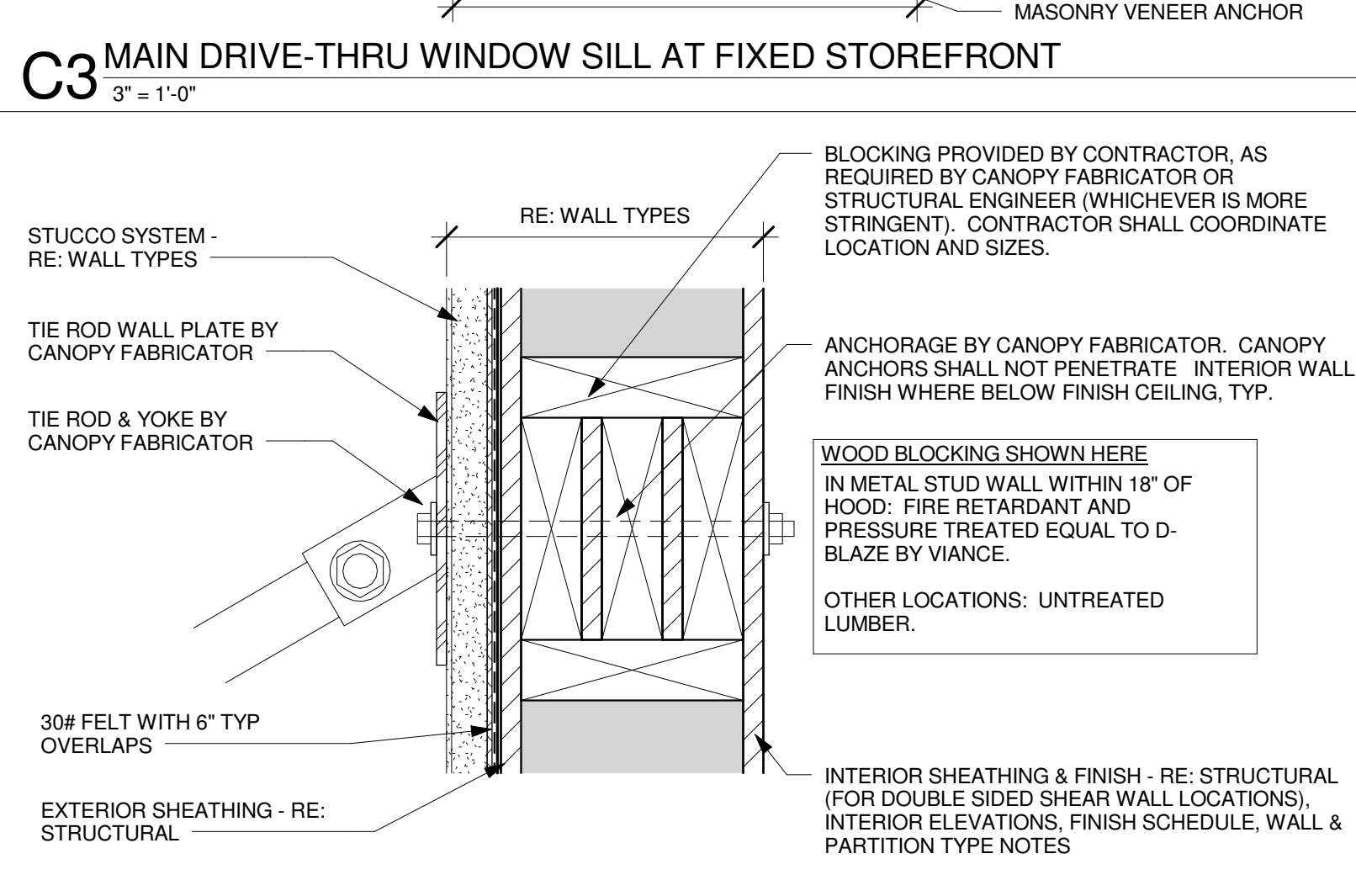
**C1 DRIVE-THRU WINDOW JAMB**

3' = 1'-0"



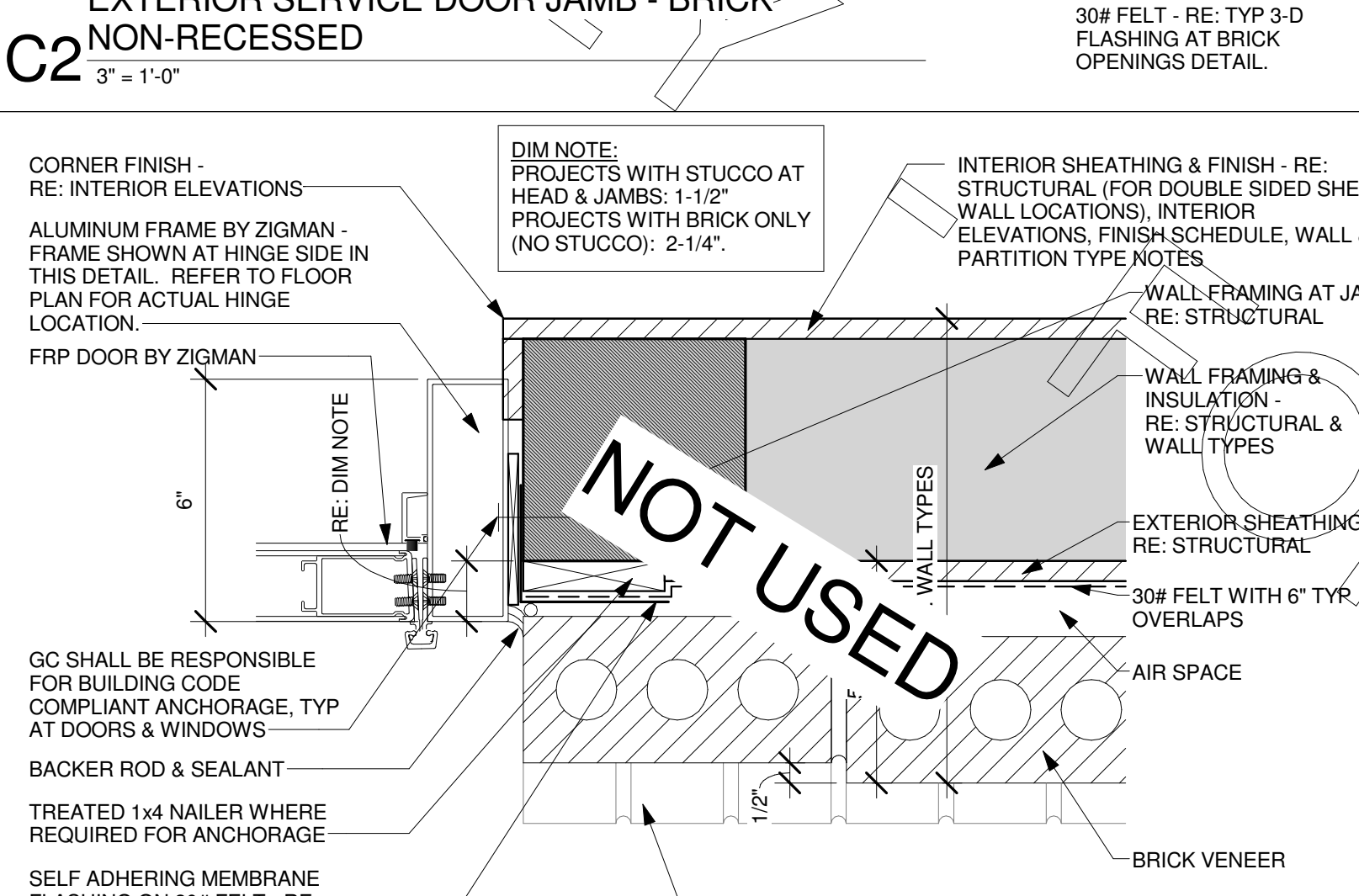
**B4 CANOPY TIE-ROD & BRICK JUNCTION**

3' = 1'-0"



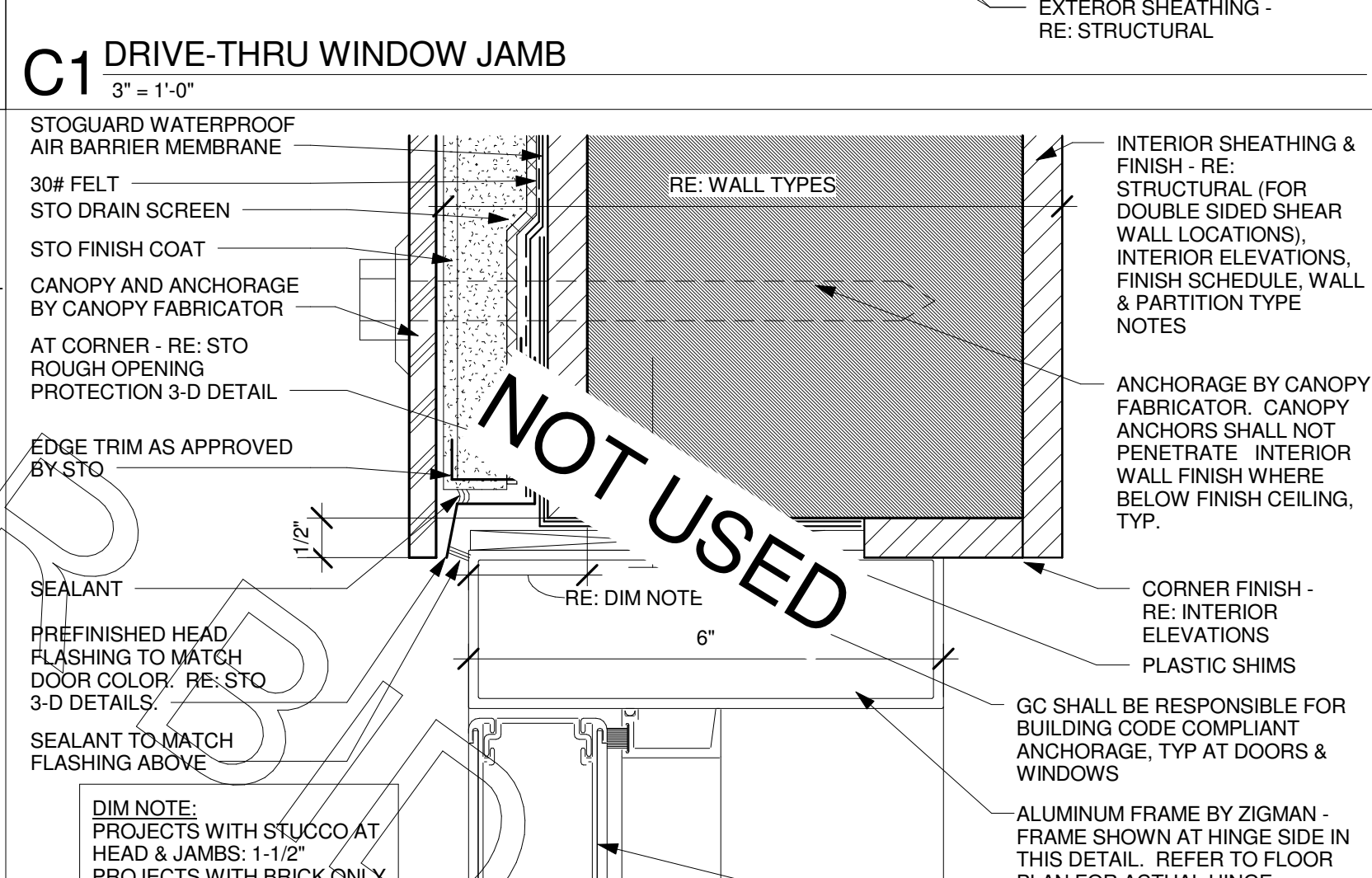
**B3 CANOPY TIE-ROD & STUCCO JUNCTION**

3' = 1'-0"



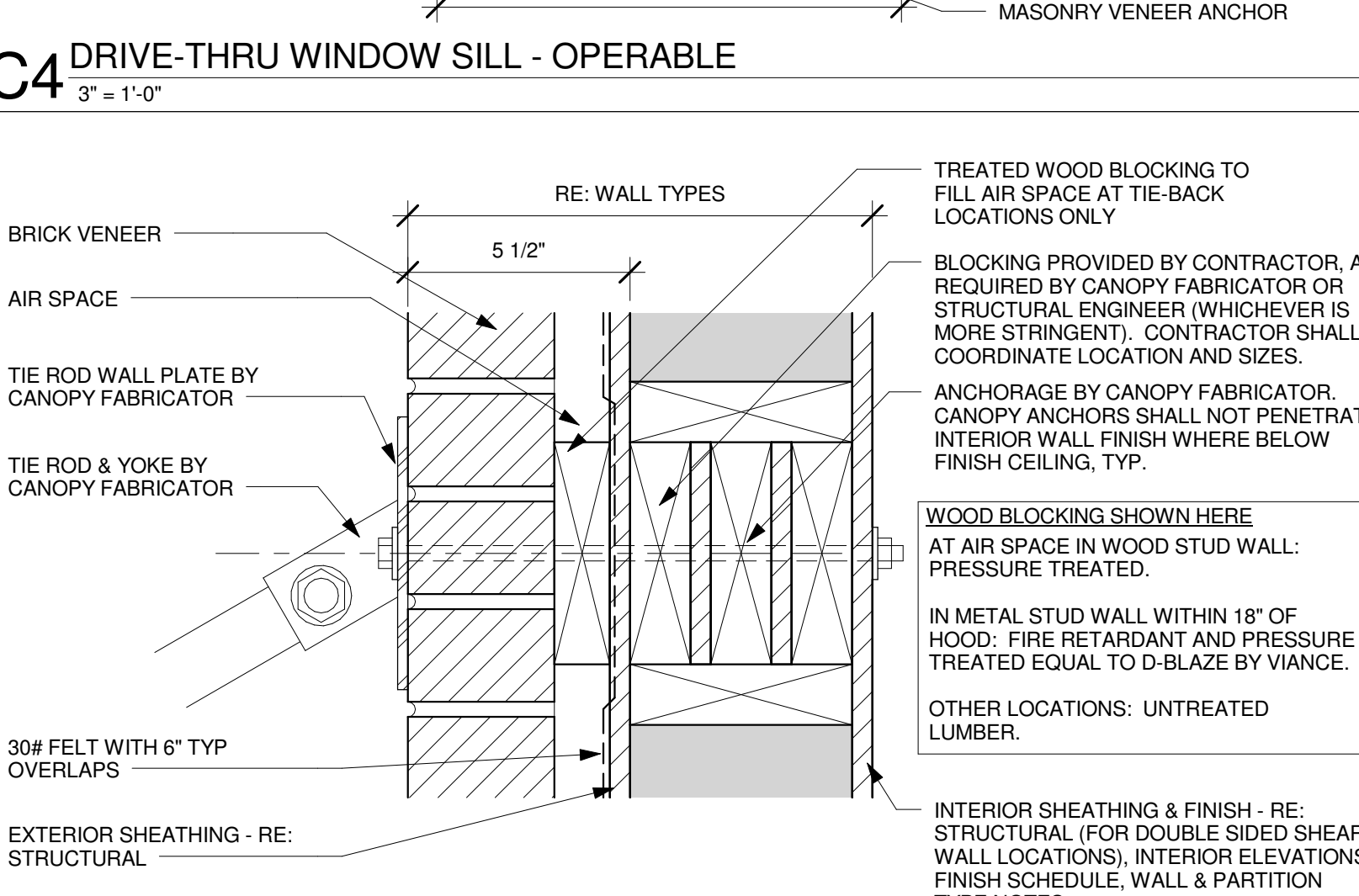
**B2 EXTERIOR SERVICE DOOR JAMB - BRICK RECESSED**

3' = 1'-0"



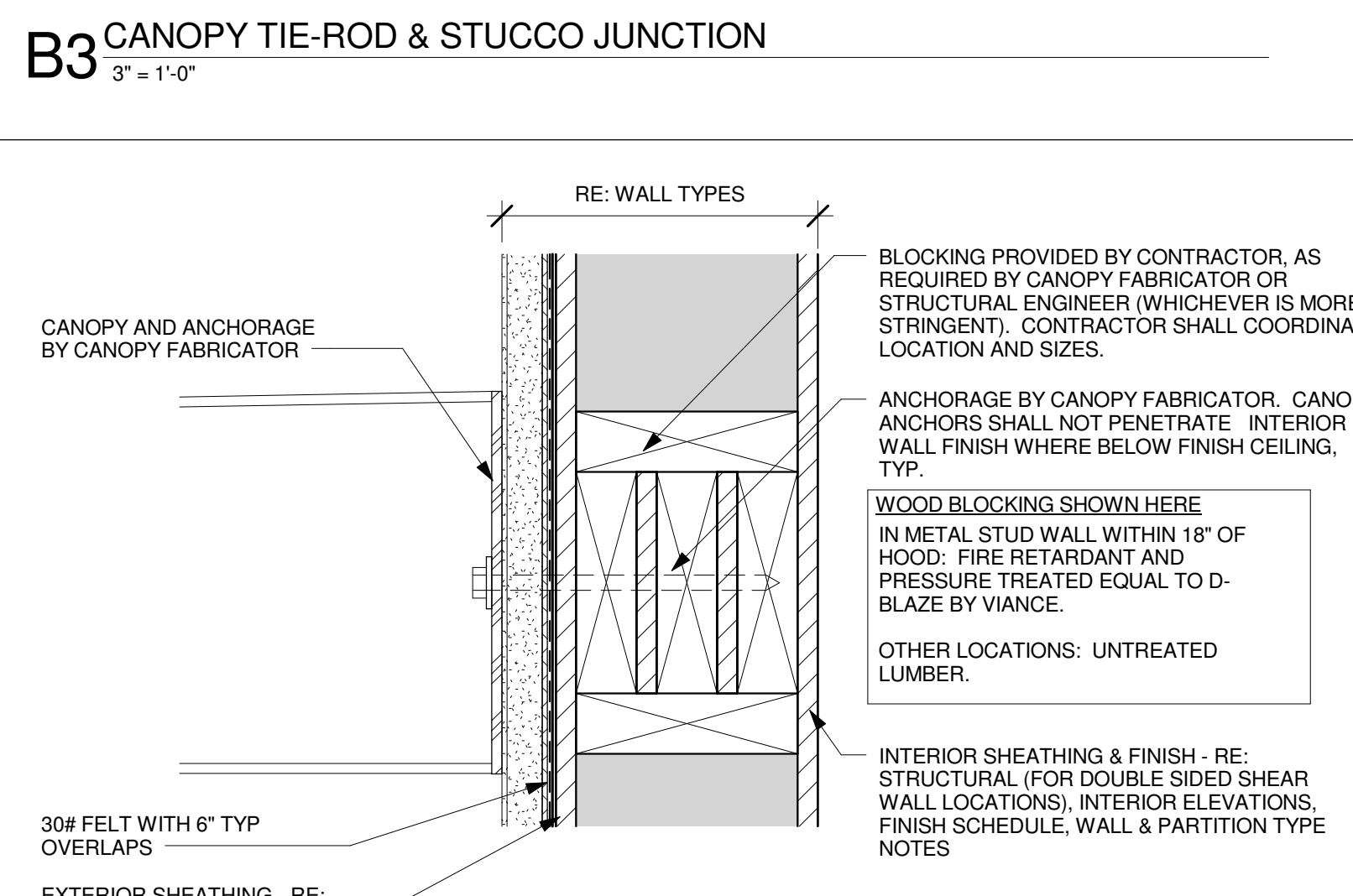
**B1 EXTERIOR SERVICE DOOR HEAD - STUCCO**

6' = 1'-0"



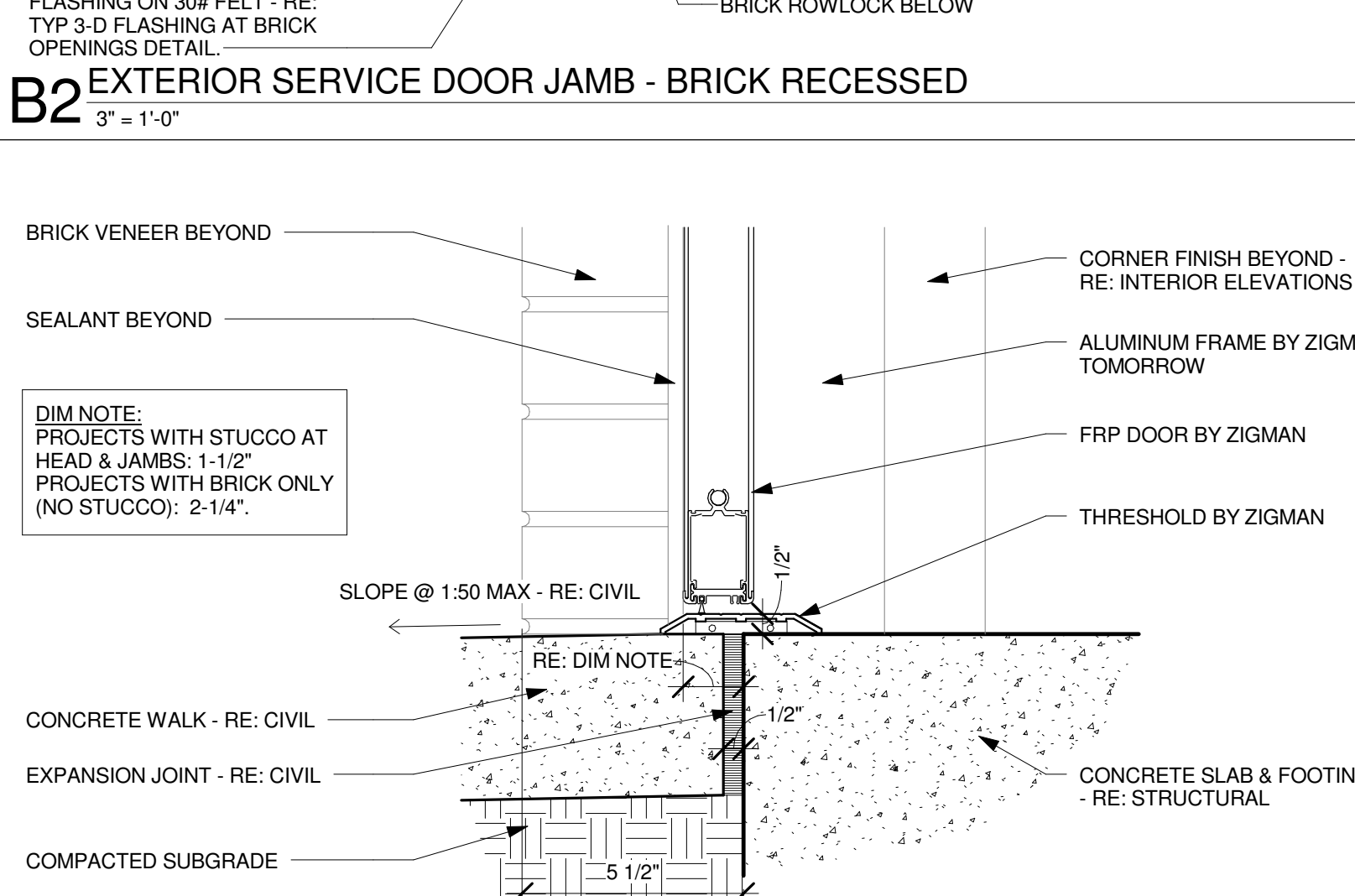
**A4 CANOPY & BRICK JUNCTION**

3' = 1'-0"



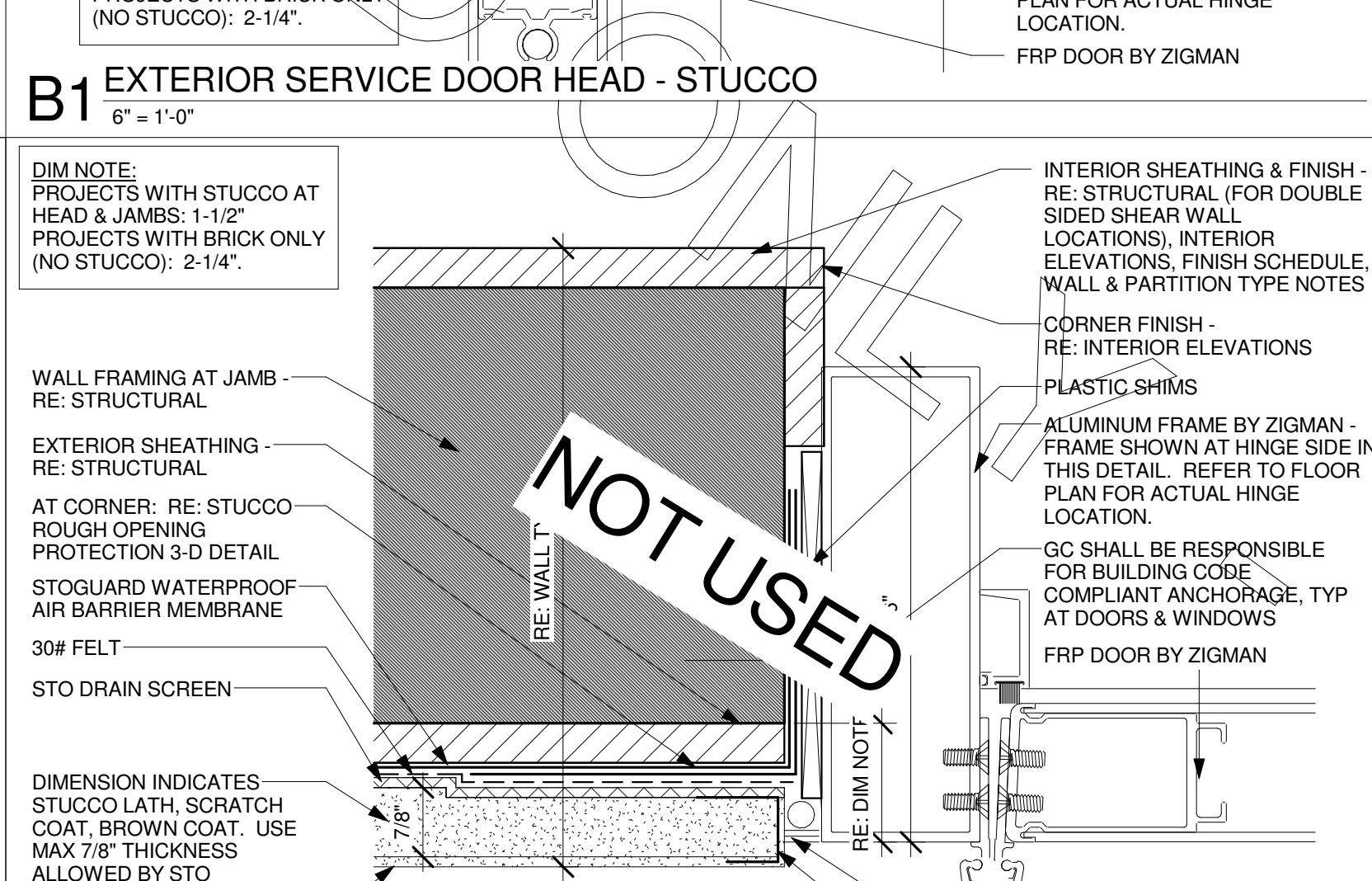
**A3 CANOPY & STUCCO JUNCTION**

3' = 1'-0"



**A2 EXTERIOR SERVICE DOOR THRESHOLD**

3' = 1'-0"



**A1 EXTERIOR SERVICE DOOR JAMB - STUCCO**

6' = 1'-0"