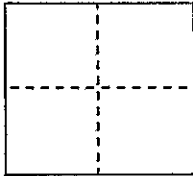


**CORNER RECORD**Document Number CR 1931City of Unincorporated CountyCounty of Alameda, CaliforniaBrief Legal Description Concrete Pin Monument ; " El Portal " Tract (12M73)**CORNER TYPE**

Government Corner ☐ Control ☒  
 Meander ☐ Property ☒  
 Rancho ☐ Other ☐  
 Date of Survey 6 JUNE, 2001

**COORDINATES (Optional)**

N. \_\_\_\_\_  
 E. \_\_\_\_\_  
 Zone \_\_\_\_\_ NAD27 ☐ NAD83 ☐  
 NAD83 Epoch \_\_\_\_\_  
 Elev. \_\_\_\_\_  
 Vert. Datum: NGVD29 ☐ NAVD88 ☐  
 Meas. Units: Metric ☐ Imperial ☐

Corner - Left as found ☐ Found and tagged ☒ Established ☐ Reestablished ☐ Rebuilt ☐

Identification and type of corner found: Evidence used to identify or procedure used to establish or reestablish the corner:

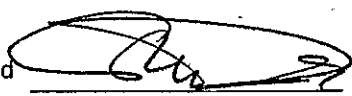
Monument at intersection of Rogerio Ave.; 5' east of centerline; and 170<sup>th</sup> Ave.; (Formerly San Joaquin Ave.) 5' south of centerline. Monument shown on "El Portal" Tract Map. Monument was referenced with nails and EBMUD Mon RP Tags and with one found cross. (FB 4192 pg. 12)

A description of the physical condition of the monument as found and as set or reset:

Concrete Pin Monument found in good condition.

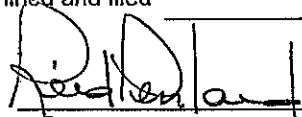
**SURVEYOR'S STATEMENT**

This Corner Record was prepared by me or under my direction in conformance with the Professional Land Surveyor's Act on MAY, 2003

Signed  P.L.S. or R.C.E. No. LS4765

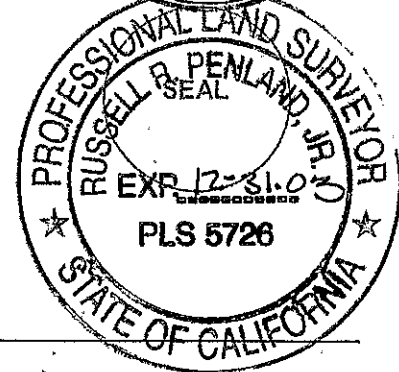
**COUNTY SURVEYOR'S STATEMENT**

This Corner Record was received 08-01-03  
 and examined and filed 10-06-03

Signed  P.L.S. or R.C.E. No. 5726

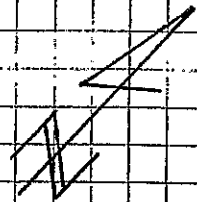
Title COUNTY SURVEYOR

County Surveyor's Comment: \_\_\_\_\_



" EL PORTAL "

ALAMEDA, CO.



N.T.S.

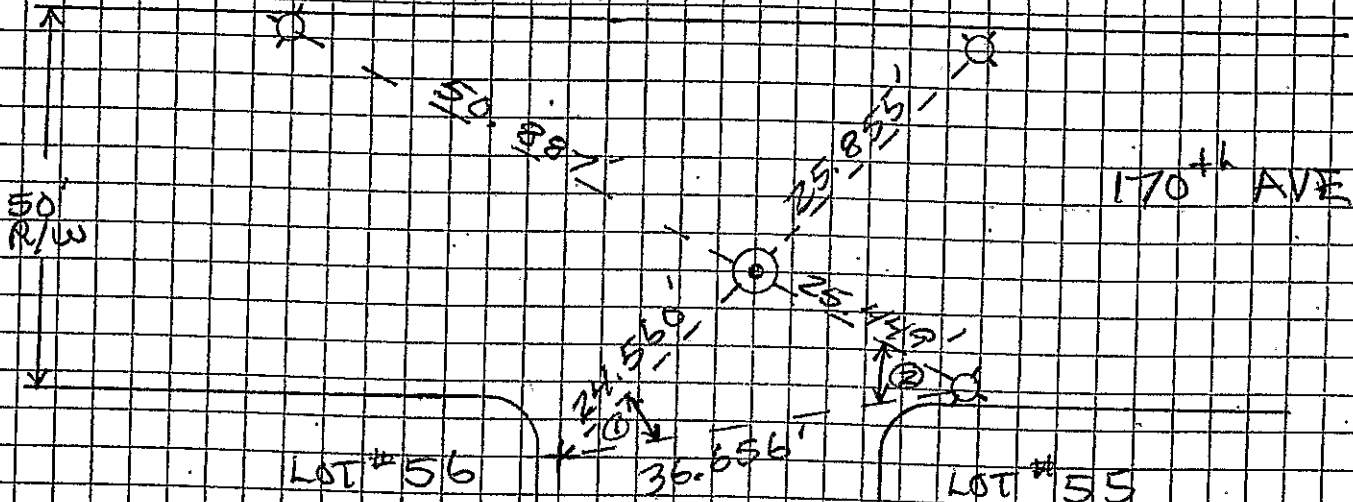
LOT # 36

APN # 080A-0102-024-00

N 45° 59' 15" E

LOT # 37

APN # 080A-0102-023-00



LOT # 56

APN # 080A-0108-001-00

LOT # 55

APN # 080A-0107-011-00

① - 38° 19' 25"

② - 36° 45' 45"

N 49° 06' 55" W

ROGERIO AVE.

LEGEND

- ⊙ FD. COUNTY MON.
- + FD. CUT CROSS
- ⊗ JET. NAIL AND MON. R.P. TAG

\* REF - EBM 00  
FB # 4192, PG 12  
6 JUNE 01; JUNE 06